

MISSOULA MONTANA (MSO)(KMSO) 4 NW UTC-7(-6DT) N46°54.98' W114°05.43'
 3206 B Class I, ARFF Index C NOTAM FILE MSO
RWY 12-30: H9501X150 (ASPH-GRVD) S-145, D-170, 2D-255

GREAT FALLS
 H-1D, L-13C
 IAP, AD

PCR 730 F/D/X/T HIRL
RWY 12: MALS.R. PAPI(P4L)—GA 3.0° TCH 55'. RVR-T
RWY 30: REIL. PAPI(P4L)—GA 3.0° TCH 50'. RVR-R
RWY 08-26: H4612X75 (ASPH-GRVD) S-30, D-50 PCR 175 F/D/X/T
 MIRL

RUNWAY DECLARED DISTANCE INFORMATION

RWY 08: TORA-4612 TODA-4612 ASDA-4612 LDA-4612
RWY 12: TORA-9501 TODA-9501 ASDA-9501 LDA-9501
RWY 26: TORA-4612 TODA-4612 ASDA-4612 LDA-4612
RWY 30: TORA-9501 TODA-9501 ASDA-9501 LDA-9501

SERVICE: S4 **FUEL** 100LL, JET A1+ **OX** 1, 2, 3, 4 **LGT** When ATCT
 clsd ACTVT MALS.R Rwy 12; PAPI Rwy 30; MIRL Rwy 08-26; HIRL
 Rwy 12-30—CTAF.

AIRPORT REMARKS: Attended continuously. Migratory & small bird actvty on
 & invof arpt year round. Prchtg at or armd arpt. Cold temperature
 airport. Altitude correction required at or below -11C. Rwy 08-26
 CLSD perm. Hang glider ops, paraglider act 5.5 NM east of AER 30.
 Ctc arpt mgr to req apvl prior to ultralight ops. Rwy 12-30 180° turns
 for acft over 12,500 lbs GWT prohibited on all movement areas. Avoid
 locked turns at all times. Twy G btn Rwy 08 end to Rwy 12-30 rstd to acft under 12,500 lbs. Ldg fee for all coml acft
 and all acft over 9,000 lbs.

AIRPORT MANAGER: 406-728-4381

WEATHER DATA SOURCES: ASOS (406) 213-9541

COMMUNICATIONS: CTAF 118.4 ATIS 126.65 (406-549-2989) UNICOM 122.95

- Ⓡ SPOKANE APP/DEP CON 124.9 (1400-0620Z‡)
- Ⓡ SALT LAKE CENTER APP/DEP CON 127.075 (0620-1400Z‡)

MILLER PEAK RCO 122.2 (GREAT FALLS RADIO)

TOWER 118.4 (1300-0500Z‡) **GND CON** 121.9

AIRSPACE: CLASS D svc 1300-0500Z‡; other times CLASS E.

RADIO AIDS TO NAVIGATION: NOTAM FILE MSO.

(VL) (L) VOR/W/DME 112.8 MSO Chan 75 N46°54.48' W114°05.02' at fld. 3202/13E.

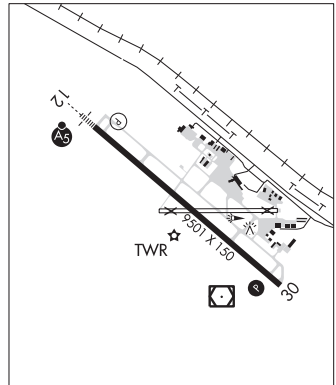
VOR unusable:

- 047°-067° byd 30 NM
- 067°-086° byd 30 NM blo 14,000'
- 086°-120° byd 27 NM blo 13,000'
- 086°-120° byd 36 NM blo 14,000'
- 086°-154° byd 20 NM blo 11,000'
- 120°-154° byd 35 NM blo 13,000'
- 172°-227° byd 25 NM
- 227°-247° byd 20 NM blo 12,000'
- 227°-247° byd 30 NM
- 228°-335° byd 40 NM
- 247°-262° byd 30 NM blo 12,000'
- 262°-277° byd 30 NM blo 10,000'
- 297°-347° byd 30 NM
- 347°-047° byd 10 NM
- 349°-359°
- 360°-157° byd 40 NM

DME unusable:

- 047°-067° byd 30 NM
- 067°-086° byd 30 NM blo 14,000'
- 086°-120° byd 27 NM blo 14,000'
- 086°-120° byd 39 NM
- 086°-154° byd 20 NM blo 11,000'
- 120°-154° byd 35 NM blo 13,000'
- 172°-227° byd 25 NM
- 227°-247° byd 20 NM blo 12,000'
- 227°-247° byd 30 NM
- 247°-262° byd 30 NM blo 12,000'
- 262°-277° byd 30 NM blo 10,000'
- 297°-347° byd 30 NM
- 347°-047° byd 10 NM

ILS 109.3 I-MSO Rwy 12. Class IA. LOC unusable byd 29° left of course byd 30° right of course.



MULLAN PASS MLP N47°27.42' W115°38.77'/6028
 ASOS 135.475 (208) 744-1721

GREAT FALLS
 H-1D, L-13C