

**SEELEY LAKE****LINDEY'S LANDING WEST SPB** (M35) 1 NW UTC-8(-7DT) N47°10.46' W113°28.80'**GREAT FALLS**

3993 NOTAM FILE GTF

**WATERWAY 12-30:** 14000X1000 (WATER)**SERVICE:** FUEL MOGAS**SEAPLANE REMARKS:** Attended continuously. Mogas fuel avbl by prior req only.**AIRPORT MANAGER:** 406-677-4101**COMMUNICATIONS:** CTAF 122.9**CLEARANCE DELIVERY PHONE:** For CD ctc Spokane Apch at 509-742-2522, when Apch clsd ctc Salt Lake ARTCC at 801-320-2568**SEELEY LAKE** (23S) 2 E UTC-7(-6DT) N47°10.92' W113°26.71'**GREAT FALLS**

4256 B NOTAM FILE GTF

**RWY 16-34:** 4575X75 (TURF) 1.7% up NW**RWY 16:** Trees.**SERVICE:** LGT Rwy 34 solar lgts first 2/3 of rwy – summer months only.**AIRPORT REMARKS:** Unattended. Birds and wildlife on and in/ov arpt. Snow removal intmt, call amgr for current conds

406-444-2506. Tkofs to N not recommended due to rising trrn. Rwy 34 has 1150' ovrn avbl for tkof and ldg. Trees in transitional sfc full rwy len both sides. Rwy 16 and Rwy 34 mkd full len with w cones &amp; reflective tape, summer months only. Rwy 16 displaced thld 311' fm rwy end for 20:1 approach slope marked with double w cones.

**AIRPORT MANAGER:** 406-444-2506**COMMUNICATIONS:** CTAF 122.9**CLEARANCE DELIVERY PHONE:** For CD ctc Spokane Apch at 509-742-2522, when Apch clsd ctc Salt Lake ARTCC at 801-320-2568**SHELBY** (SBX)(KSBX) 2 N UTC-7(-6DT) N48°32.44' W111°52.28'**GREAT FALLS**

3443 B NOTAM FILE GTF

**H-1D, L-13C****RWY 05-23:** H5005X75 (ASPH) S-15 PCN 6 F/D/Y/T MIRL**IAP**

0.5% up NE

**RWY 05:** PAPI(P2L)—GA 3.0° TCH 29'.**RWY 23:** PAPI(P2L)—GA 3.0° TCH 32'.**RWY 11-29:** H3701X60 (ASPH) S-15 MIRL**RWY 11:** PAPI(P2L)—GA 3.0° TCH 31'.**RWY 29:** PAPI(P2L)—GA 3.0° TCH 38'.**SERVICE:** FUEL 100LL, JET A+ LGT ACTVT PAPI Rwy 05 and Rwy 23;

MIRL Rwy 05-23 and Rwy 11-29—CTAF.

**AIRPORT REMARKS:** Attended 1500-0100Z±. For fuel after hrs call

406-450-2461 or 406-450-2463. Self svc credit card for 100LL and Jet A+. Fuel truck avbl for Jet A+. Deer on and in/ov arpt. Twy edges marked with reflectors.

**AIRPORT MANAGER:** (406) 450-2463**WEATHER DATA SOURCES:** AWOS-3PT 128.325 (406) 434-2542.**COMMUNICATIONS:** CTAF/UNICOM 122.8**CUT BANK RCO 122.2** (GREAT FALLS RADIO)® **SALT LAKE CENTER APP/DEP CON 133.4****CLEARANCE DELIVERY PHONE:** For CD ctc Salt Lake ARTCC at 801-320-2568.**RADIO AIDS TO NAVIGATION:** NOTAM FILE CTB.**CUT BANK (VL) (DH) VOR/DME 113.35** CTB Chan 80(Y) N48°33.90' W112°20.60' 077° 18.9 NM to fld.

3791/17E.

VOR unusable:

049°-053° byd 40 NM

061°-073° byd 40 NM

079°-090° byd 40 NM

125°-130° byd 40 NM

143°-149° byd 40 NM

167°-177° byd 40 NM blo 9,000'

167°-177° byd 54 NM

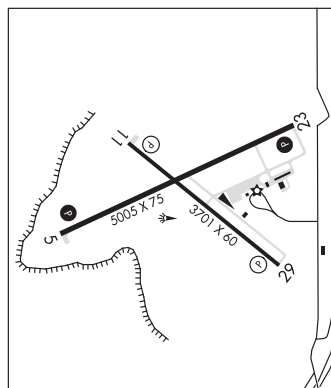
178°-190° byd 40 NM

191°-201° byd 40 NM blo 12,000'

191°-201° byd 53 NM

202°-260° byd 40 NM

271°-282° byd 40 NM

**SHER-WOOD** (See PLENTYWOOD on page 135)