

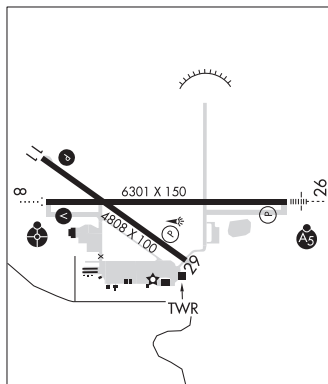
**PENDELTON**

**EASTERN OREGON RGNL AT PENDELTON** (PDT)(KPD) P (ARNG) 3 NW UTC-8(-7DT) N45°41.71' SEATTLE  
 W118°50.60' H-1C, L-13A  
 1494 B NOTAM FILE PDT IAP, AD

**RWY 08-26:** H6301X150 (ASPH-PFC) S-115, D-132, 2D-210  
 PCN 34 F/B/Y/U HIRL  
**RWY 08:** ODALS. VASI(V4R)—GA 3.0° TCH 35'. RVR-R Ground.  
**RWY 26:** MALSR. PAPI(P4L)—GA 3.0° TCH 48'. RVR-T  
**RWY 11-29:** H4808X100 (ASPH-GRVD) S-70, D-120, 2S-152,  
 2D-122 PCN 18 F/B/Y/U MIRL  
**RWY 11:** REIL. PAPI(P4L)—GA 3.0° TCH 46'.  
**RWY 29:** REIL. PAPI(P4R)—GA 3.0° TCH 48'.

**RUNWAY DECLARED DISTANCE INFORMATION**  
**RWY 08:** TORA-6301 TODA-6301 ASDA-6301 LDA-6301  
**RWY 11:** TORA-4808 TODA-4808 ASDA-4808 LDA-4808  
**RWY 26:** TORA-6301 TODA-6301 ASDA-6301 LDA-6301  
**RWY 29:** TORA-4808 TODA-4808 ASDA-4808 LDA-4808

**SERVICE:** S4 FUEL 100LL, JET A1+, MOGAS LGT When ATCT clsd  
 ACTVT MALSR Rwy 26; ODALS Rwy 08; REIL Rwy 11 & 29; VASI  
 Rwy 08, PAPI Rwy 11; HIRL Rwy 08-26; MIRL Rwy 11-29—CTAF.  
 Rwy 11-29 PCL for hi inst 5 clicks only. PAPI Rwy 29 opr constly.  
 REIL Rwy 11 OTS. REIL Rwy 29 OTS. **MILITARY— FUEL** (NC-100LL,  
 A1+ - Self svc avbl H24.)



**AIRPORT REMARKS:** Attended 1400-0400Z†. Svcs avbl from FBO btn 0400-1400Z† by phone call 541-276-3313 or  
 541-310-9542. Self fueling cardlocks avbl 24 hrs. Clsd to unscheduled air carrier ops with more than 30 pax seats exc  
 PPR 4 hrs call 541-276-4411. Deer on and invof arpt Apr and Aug especially mornings and evenings. Thld Rwy 29 nstd  
 marking, portion of rwy to function as twy. Twy B clsd south of Twy A. Int of ramp and Rwy 29 north end of terminal bldg,  
 area obstructed from view of twr by terminal bldg. Rwy 08-26 surface condition unmonitored 1400-0400Z†. Rwy 11-29  
 surface condition unmonitored 1400-0400Z†. Fqt dly UAS actvty (lge and small) inside and invof the CDAS.

**AIRPORT MANAGER:** 541-276-7754  
**WEATHER DATA SOURCES:** ASOS 118.325 (458) 212-2168.  
**COMMUNICATIONS:** CTAF 119.7 UNICOM 122.95  
**PENDELTON RCO 122.2** (MC MINNVILLE RADIO)  
 Ⓡ SPOKANE APP/DEP CON 133.15 (1400-0600Z†) other times ctc  
 Ⓡ SEATTLE CENTER 132.6

**TOWER 119.7** (1400-0400Z†) **GND CON 121.9**  
**CLEARANCE DELIVERY PHONE:** When Apch clsd, for CD ctc Seattle ARTCC at 253-351-3694  
**AIRSPACE:** CLASS D svc 1400-0400Z†; other times CLASS E.  
**RADIO AIDS TO NAVIGATION:** NOTAM FILE PDT.  
**PENDELTON (VH) (H) VORTACW 114.7** PDT Chan 94 N45°41.91' W118°56.32' 079° 4.0 NM to fld. 1575/14E.  
 VOR unusable:  
 057°-066° byd 40 NM  
 067°-078° byd 40 NM blo 29,000'  
 096°-106° byd 40 NM blo 8,300'  
 096°-106° byd 48 NM blo 18,000'  
 107°-117° byd 40 NM  
 118°-128° byd 40 NM blo 12,000'  
 118°-128° byd 75 NM  
 129°-207° byd 40 NM  
**ILS 110.3** I-PDT Rwy 26. Class IE. LOC and glideslope unmonitored when twr clsd.  
**COMM/NAV/WEATHER REMARKS:** Emerg freq 121.5 not avbl at twr.

**PINEHURST STATE** (24S) 1 SW UTC-8(-7DT) N42°06.61' W122°22.99' **KLAMATH FALLS**

3643 NOTAM FILE MMV  
**RWY 04-22:** H2800X30 (ASPH) 2.0% up SW  
**RWY 04:** Trees.  
**RWY 22:** Trees.

**AIRPORT REMARKS:** Unattended. Surface conditions not reported. Irregular winter maintenance. Arpt may be clsd by snow.  
 Strong winds from any direction will likely cause low-level turbulence. Rwy 04-22 12 ft trees wi 25 feet of cntrn full len.  
 Rwy 22 slopes up to the SW, with abrupt 4% rise on SW half of rwy. Owner advises contact Oregon Dept. of Aviation  
 503-378-4880 prior to use.

**AIRPORT MANAGER:** 503-378-4880  
**COMMUNICATIONS:** CTAF 122.9  
**CLEARANCE DELIVERY PHONE:** For CD ctc Seattle ARTCC at 253-351-3694.

**PITTSBURG LANDING** (See IMNAHA on page 181)