

PORTLAND

PORTLAND INTL (PDX)(KPD) P (ANG) 4 NE UTC-8(-7DT) N45°35.32' W122°35.81'

SEATTLE
H-1B, L-1C
IAP, DIAP, AD

31 B LRA Class I, ARFF Index E NOTAM FILE PDX
RWY 10R-28L: H11000X150 (CONC-GRVD) S-200, D-200, 2S-175,
2D-360 PCR 1200 R/D/W/T HIRL CL

RWY 10R: ALSF2. TDZL. PAPI(P4R)—GA 3.0° TCH 71'. RVR-TMR Rgt ttc.

RWY 28L: MALS. PAPI(P4L)—GA 3.0° TCH 72'. RVR-TMR

RWY 10L-28R: H9825X150 (ASPH-GRVD) S-200, D-200, 2S-175,
2D-400 PCR 2270 F/D/X/T HIRL CL

RWY 10L: MALS. PAPI(P4L)—GA 3.0° TCH 51'. RVR-TMR Thld dsplcd 1290'.

RWY 28R: MALS. PAPI(P4R)—GA 3.0° TCH 70'. RVR-TMR Thld dsplcd 535'. Road. Rgt ttc.

RWY 03-21: H6000X150 (ASPH-GRVD) S-120, D-250, 2S-175,
2D-380 PCR 400 F/D/X/T MIRL

RWY 03: REIL. PAPI(P4L)—GA 3.3° TCH 60'.

RWY 21: REIL. PAPI(P4R)—GA 3.6° TCH 32'. Road.

RUNWAY DECLARED DISTANCE INFORMATION

- RWY 03: TORA-6000 TODA-6000 ASDA-6000 LDA-6000
- RWY 10L:TORA-9825 TODA-9825 ASDA-9825 LDA-8535
- RWY 10R:TORA-11000 TODA-11000 ASDA-11000 LDA-11000
- RWY 21: TORA-6000 TODA-6000 ASDA-6000 LDA-6000
- RWY 28L:TORA-11000 TODA-11000 ASDA-11000 LDA-11000
- RWY 28R:TORA-9825 TODA-9825 ASDA-9825 LDA-9290

ARRESTING GEAR/SYSTEM

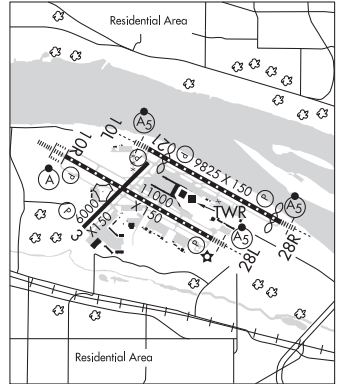
RWY 10R TYPE-H BAK-12B(B) (1625). TYPE-H BAK-12B(B) (2000'). RWY 28L

SERVICE: S4 FUEL 100LL, JET A 0X1, 2, 3, 4 LGT RWY 03 PAPI unusbl byd 4 deg left and rgt of RCL and byd 5 NM unusbl. MILITARY— JASU 4(A/M32A-86) (MC-11) 1(MA-1A) FUEL A (C503-331-4220). J8 (Mil) (NC-100LL, A) FLUID LHOXRB OIL O-128-133-148(Mil) TRAN ALERT No tran svc avbl.

NOISE: NS ABTMT procedures in effect call noise office, 503-460-4100. Rwy 28L arr are noise sensitive, exp apch to Rwy 28R with transition to Rwy 28L.

AIRPORT REMARKS: Attended continuously. Arprt clsd to non-pwrld acct exc in emerg. Migratory and wintering flocks of large waterfowl on and invof arprt. Heavy seagull acct Sep-Apr, exp high number of birds yr round, check lcl advisories. Rwy 28R perimeter road at 200' from rwy thld and 408' rgt from rwy extdd cntrln. Uncltl ttc at Pearson Fld Vancouver WA, 3 NM west of Rwy 10L thld on extdd cntrln. Rwy 21 clsd to Height Group IV acct with cockpit to wheel hgt greater than 22'. Rwy 28R 60' levee road lctd aprxly parallel to rwy at 200' fm thr and 507' rt fm rwy extndd cntrln. Twy W clsd to acct with wingspan gtr than 118 ft unless under tow. Twy K btn Twy A5 and Twy V clsd to acct wingspan more than 168 ft. Twy A3 btn Twy A and the GA ramp clsd to acct with wingspan gtr than 135 feet unless under tow. At the west end arm/dearm area on Twy C no acct of any type may taxi past the arm/dearm area while it is being used. Acct authorized to utilize the NW ramp will be towed to/from this ramp. Area of Twy T btn M and E3 not vsb fm twr. Twy T btn exits B5 and B6 clsd to acct with wingspan gtr than 118 ft. Twy C3 clsd to acct with wingspan equal to or gtr than 79 ft. Twy V clsd to acct with wingspan greater than 168 ft. Acct with wingspan greater than 118 ft prohibited fm turning WB onto Twy A fm Twy V unless under tow. Acct with wingspan greater than 118' are prohibited from turning eastbound on Twy C from southwestbound on Twy F unless under tow. Twy C btn Twy C6 and Twy C8 clsd to acct with wingspan gtr than 200'. Twy K btn Twy V and Twy A4 clsd to acct wingspan more than 118 ft. 180° turns by acct weighing in excess of 12,500 lbs prohibited on Rwy 10L-28R, Rwy 03-21 and all twys. PDX has fac constraints that lmt its ability to accommodate divd fits and mnntn the arprt safe opn dur ireg ops. Acct oprs shud ctc the arprt duty mgr at (503) 460-4236 to coord divd fits exc in the case of a declared in-flt emerg. Ldg fee. Coml acct and oprs of acct with an FAA certified max gross ldg wt that exceeds 10,000 lbs are rqrld to pay a ldg fee. Possible Rwy 28L glideslope fluctuation prior to addum when weather is greater than 800/2. ASSC in use. Operate transponders with altitude reporting mode and ADS-B (if equipped) enabled on all airport surfaces. Flight Notification Service (ADCUS) avbl.

MILITARY REMARKS: ANG See FLIP AP/1 for Supplementary Arprt Information. Hazardous bird cond exist. Phase I May-Oct, Phase II Nov-Apr. Current bird watch cond are not reported on ATIS. Oregon ANG E ramp sun shade obst lgtg o/s. PPR/Official Business Only. Base ops opr 1500-2300Z± Mon-Fri exc hcl, DSN 638-4390, C503-335-4390. Ctc Base OPS 15 mins prior to ldg and after departing on 281.2. Tran quarters not avbl. CAUTION: Obst lgtg is not NVD compatible. NVD not authorized while airborne invof afld. NSTD yellow park spot designators and equipment tool box location painted on ramp, white RWR boxes and white wingtip lines on mil twy. Please ctc base ops or req follow me if not familiar with Portland ANG Base park procedures. East end arm/dearm area on mil twy lacks adequate wingtip clnc. Multiple fire hydrants do not meet clnc requirements. No tacan designation sign.



CONTINUED ON NEXT PAGE

CONTINUED FROM PRECEDING PAGE

AIRPORT MANAGER: 503-415-6195

WEATHER DATA SOURCES: ASOS (458) 212-2405 WSP.

COMMUNICATIONS: D-ATIS 128.35 269.9 (503) 493-7557 UNICOM 122.95

® APP/DEP CON 118.1 284.6 (100°-279° HIGH) 124.35 299.2 (280°-099°) 126.9 (APCH FINAL)

TOWER 118.7 257.8 (Rwy 10L-28R) 123.775 251.125 (Rwy 03-21 and Rwy 10R-28L)

GND CON 121.9 348.6 CLNC DEL 120.125 318.1

AFR OPNS 138.45 252.8 ANG COMD POST 288.9 (Stump Town)

ANG OPNS 280.5 PORTLAND GUARD OPS 281.2

CPDLC (LOGON KUSA)

PDC

AIRSPACE: CLASS C svc ctc APP CON.

VOR TEST FACILITY (VOT) 111.0

RADIO AIDS TO NAVIGATION: NOTAM FILE PDX.

BATTLE GROUND (VH) (H) VORTACW 116.6 BTG Chan 113 N45°44.87' W122°35.49' 160° 9.6 NM to fld.
253/21E.

TACAN AZIMUTH unusable:

035°-085° byd 35 NM blo 10,000'

DME unusable:

035°-085° byd 35 NM blo 10,000'

VOR unusable:

034°-044° byd 40 NM blo 14,500'

034°-044° byd 56 NM

045°-048° byd 40 NM

049°-059° byd 40 NM blo 10,000'

049°-059° byd 51 NM blo 11,500'

049°-059° byd 59 NM

060°-063° byd 40 NM

064°-086° byd 40 NM blo 18,000'

064°-086° byd 65 NM blo 22,000'

092°-102° byd 40 NM blo 29,000'

103°-109° byd 40 NM

110°-120° byd 40 NM blo 18,000'

121°-139° byd 40 NM blo 18,000'

140°-145° byd 40 NM

170°-180° byd 40 NM blo 5,000'

170°-180° byd 49 NM

181°-195° byd 40 NM

196°-206° byd 40 NM blo 18,000'

207°-285° byd 40 NM

305°-323° byd 40 NM

324°-334° byd 40 NM blo 5,000'

324°-334° byd 47 NM

335°-339° byd 40 NM

340°-350° byd 40 NM blo 9,000'

340°-350° byd 56 NM

351°-027° byd 40 NM

COLUMBIA (H) TACAN Chan 29 CBU (109.2) N45°35.32' W122°36.68' at fld. 22/15E.

TACAN unusable:

025°-035° byd 30 NM blo 9,500'

035°-055° byd 20 NM blo 9,500'

105°-145° byd 65 NM blo 18,000'

125°-135° byd 15 NM blo 8,500'

160°-255° byd 15 NM blo 10,500'

255°-275° byd 20 NM blo 8,500'

DME unusable:

025°-035° byd 30 NM blo 9,500'

035°-055° byd 20 NM blo 9,500'

105°-145° byd 65 NM blo 18,000'

125°-135° byd 15 NM blo 8,500'

160°-255° byd 15 NM blo 10,500'

255°-275° byd 20 NM blo 8,500'

ILS/DME 111.3 I-VDG Chan 50 Rwy 10L. Class IT. DME also serves Rwy 28R.

ILS/DME 110.5 I-PDX Chan 42 Rwy 10R. Class IIIE. DME also serves Rwy 28L.

LOC/DME 108.9 I-GPO Chan 26 Rwy 21.

ILS/DME 110.5 I-JMJ Chan 42 Rwy 28L. Class IT. DME also serves Rwy 10R. Autocoupled apch not applicable blw 880' MSL (2.4NM from thld).

ILS/DME 111.3 I-IAP Chan 50 Rwy 28R. DME also serves Rwy 10L.

COMM/NAV/WEATHER REMARKS: PDX monitors 121.5 for McMinnville (MMV).