

CONTINUED FROM PRECEDING PAGE

CLEARANCE DELIVERY PHONE: For CD if una to ctc on FSS freq, ctc Seattle ARTCC at 253-351-3694.

RADIO AIDS TO NAVIGATION: NOTAM FILE ELN.

ELLENSBURG (VH) (DH) VOR/DME 117.9 ELN Chan 126 N47°01.46' W120°27.50' 261° 3.0 NM to fld.
1771/21E.

VOR unusable:

001°-024° byd 40 NM
025°-040° byd 25 NM
040°-065° byd 34 NM
065°-075° byd 34 NM blo 18,000'
075°-080° byd 34 NM
081°-089° byd 40 NM
090°-158° byd 10 NM
158°-163° byd 27 NM
163°-248° byd 33 NM
248°-268° byd 33 NM blo 10,000'
288°-296° byd 40 NM
300°-350° byd 25 NM
350°-025° byd 25 NM blo 18,000'

DME unusable:

025°-070° byd 21 NM
070°-090° byd 34 NM
090°-158° byd 10 NM
158°-163° byd 27 NM
163°-268° byd 33 NM
300°-350° byd 21 NM
350°-025° byd 15 NM

EPHRATA MUNI (EPH)(KEPH) 2 SE UTC-8(-7DT) N47°18.48' W119°31.01'

1276 B NOTAM FILE EPH MON Airport

RWY 03-21: H5500X75 (ASPH) S-30, D-60, 2S-114 MIRL

RWY 03: REIL. PAPI(P4L)—GA 3.0° TCH 40'. Ground. Rgt tfc. 0.3% up.

RWY 21: REIL. PAPI(P4L)—GA 3.0° TCH 40'.

RWY 11-29: H3843X60 (ASPH) S-12 MIRL

RWY 11: REIL. Ground.

RWY 29: REIL. PAPI(P2L)—GA 3.0° TCH 40'.

RWY 04-22: H3467X150 (ASPH) S-12

RWY 22: Rgt tfc.

SERVICE: S2 FUEL 100LL, JET A, A+ LGT ACTVT REIL Rwy 03, 11, 21 and 29; MIRL Rwy 03-21 and MIRL Rwy 11-29—CTAF. PAPI Rwy 29, Rwy 03 and Rwy 21 opr consly.

AIRPORT REMARKS: Attended Mon-Fri 1500-0000Z†. Conds not mnt Mon-Fri 0000-1500Z†, conds not mnt Sat-Sun & hols 0000-1500Z†. Fuel 24 hr credit card svc avbl. Jet-A avbl seven days a week 1500-2300Z†. Jet-A w/additive avbl seven days a week 1500-2300Z†. Rwy 04-22 glids use 1 Apr to 1 Nov. Be alert aerobatic acft activity over center of airport.

AIRPORT MANAGER: 509-754-3508

WEATHER DATA SOURCES: ASOS 135.775 (509) 754-3761.

COMMUNICATIONS: CTAF/UNICOM 122.8

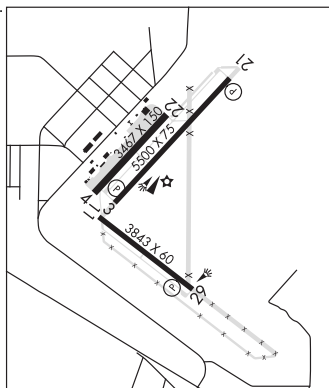
RCO 122.2 (SEATTLE RADIO)

® GRANT COUNTY APP/DEP CON 126.4 (1400-0600Z†)

® SEATTLE CENTER APP/DEP CON 126.1 (0600-1400Z†)

CLEARANCE DELIVERY PHONE: For CD if una to ctc on FSS freq, ctc Grant County Apch at 509-762-2842. When Apch clsd ctc Seattle ARTCC at 253-351-3694.

SEATTLE
H-1C, L-13A
IAP



CONTINUED ON NEXT PAGE

CONTINUED FROM PRECEDING PAGE

AIRSPACE: CLASS E svc 1400-0600Z†; other times CLASS G.

RADIO AIDS TO NAVIGATION: NOTAM FILE EPH.

(VH) (H) VORTACW 112.6 EPH Chan 73 N47°22.68' W119°25.44' 201° 5.7 NM to fld. 1250/21E.

VOR unusable:

010°-014° byd 40 NM
 042°-054° byd 40 NM
 214°-228° byd 40 NM blo 7,000'
 214°-228° byd 52 NM blo 10,000'
 214°-228° byd 77 NM
 229°-247° byd 40 NM
 310°-350° byd 25 NM blo 6,500'
 310°-353° byd 40 NM
 358°-004° byd 40 NM

TACAN AZIMUTH unusable:

280°-295° byd 25 NM blo 7,000'
 310°-350° byd 25 NM blo 6,500'

DME unusable:

280°-295° byd 25 NM blo 7,000'
 310°-350° byd 25 NM blo 6,500'

COMM/NAV/WEATHER REMARKS: UNICOM mntd intrntly.

EVERETT

SEATTLE PAINE FLD INTL (PAE)(KPAE) P (AR) 6 SW UTC-8(-7DT) N47°54.44' W122°16.93'

SEATTLE

607 B LRA ARFF Index—See Remarks NOTAM FILE PAE

H-1B, L-1D

RWY 16R-34L: H9010X150 (ASPH-CONC-GRVD) S-120, D-250, 2D-550, 2D/2D2-1120 PCR 710 F/A/X/T

IAP, AD

HIRL CL

RWY 16R: MALSR. TDZL. PAPI(P4R)—GA 3.0° TCH 74'. RVR-TR Rgt tfc.

RWY 34L: MALSF. PAPI(P4L)—GA 3.0° TCH 75'. RVR-TR Trees.

RWY 16L-34R: H3004X75 (ASPH) S-12.5 PCN 4 F/B/Y/T MIRL

RWY 16L: REIL. PAPI(P2L)—GA 3.25° TCH 24'. Pole.

RWY 34R: REIL. PAPI(P2L)—GA 3.0° TCH 22'. Pole. Rgt tfc.

RUNWAY DECLARED DISTANCE INFORMATION

RWY 16L:TORA-3004 TODA-3004 ASDA-3004 LDA-3004

RWY 16R:TORA-9010 TODA-9010 ASDA-9010 LDA-9010

RWY 34L:TORA-9010 TODA-9010 ASDA-9010 LDA-9010

RWY 34R:TORA-3004 TODA-3004 ASDA-3004 LDA-3004

SERVICE: S4 FUEL 100LL, JET A OX 1, 3 LGT When ATCT clsd, ACTVT MALSR Rwy 16R; MALSF Rwy 34L; HIRL Rwy 16R-34L—CTAF. PAPI Rwy 34L opr consly. MILITARY—FUEL 100LL self svc avbl H24 with credit card at ctl ramp. Hel self svc NA. Aft hr - 425-355-6600.

NOISE: Noise sens arpt; noise abatement proc req unless drctd by ATCT; intrnt arr and low apch of sml acft ovr 250 horse pwr auzd Rwys 16L and 34R. 0500-1500Z† if wind and per allow arr Rwy 16R; dep Rwy 34L. Noise abatement and tfc proc - 425-388-5125. Intrnt dep of sml acft ovr 250 horse pwr Rwy 34R. Lrg acft fly W pat ovr wtr; sml acft fly E pat ovr arpt. Avoid low lvl oftc of Boeing Ramp NE corner of arpt. Alert; Rwy 16R-34L cnvgg tfc base to fnl 0500-1500Z†. Trng ops NA aft 0600Z†.

AIRPORT REMARKS: Attended 1500-0500Z†. Arpt conds unmnt btn 0800-1400Z†. Birds on and invof arpt. First 1000 ft of Rwy 16R conc. Tkof clnc Rwy 16R full len; ent rwy via Twy A1 unless Twy AA specified. Rwy 16L-34R CLOSED 0500-1500Z†; avoid int dep; ltd to hel 8000 lbs or less; runup areas near areas Twy F1, F5, G4 and non-mov area W of Twy G1. Trng ops NA after 0600Z†. Rwy 16R-34L when ATCT clsd int dep NA. Tgl NA 1500-1700Z† Mon-Fri. Runup area at Twy A4. Tsnt hel exp lndg/tkof on Twy B. CTN: 80 ft lgt poles SW edge of Bravo ramp. 100LL self svc H24 with credit card at ctl ramp. Hel self svc NA. Aft hr — 425-355-6600. Avoid low lvl oftc of Boeing Ramp NE corner of arpt. Class I, ARFF Index B. Clsd to unsked ACR ops gr than 30 pax seats 0500-1500Z†; exc PPR - 425-388-5125. Divd fits NA exc emerg or PPR — arpt ops 425-388-5125. Medevac svcs are conducted frm the FBO at the Bravo ramp. Twy C btn trml ramp and ctl ramp rstrd wingspan 68 ft or less. Twy D, F, G and L rstrd wingspan less than 49 ft. Twy A4, A5, K7 and B rstrd wingspan less than 118 ft. Txl H rstrd wingspan less than 49 ft. Txl E rstrd wingspan less than 171 ft. Acft wingspan 171 ft or grt on Txl E, tug ops only. East 500 ft of taxilane E rstrd to winspan less than 49 ft. Twy A2 rstrd to 30,000 lb. Twy K1 clsd under 30,000 lb. S 1200 ft E edge Twy A, Txl E frm SE corner of W hngrs to Twy A and Txl H frm NW edge of W hngrs to Txl E not vsb frm ATCT. Boeing ramp aces PPR - 206-544-5900. Bfr tax to Boeing ramp ctc Boeing twr 123.475 or call 425-342-5900. Lndg fee ovr 30,000 lb GWT. NOTE: See Special Notices—Arrival Alert.

AIRPORT MANAGER: 425-308-2347

WEATHER DATA SOURCES: ASOS (425) 355-6192 LAWRS.

CONTINUED ON NEXT PAGE