

MOSES LAKE

GRANT CO INTL (MWH)(KMWH) 5 NW UTC-8(-7DT) N47°12.52' W119°19.15'

SEATTLE  
H-1C, L-13A  
IAP, AD

1189 B ARFF Index—See Remarks NOTAM FILE MWH  
RWY 14L-32R: H13503X200 (CONC-GRVD) S-85, D-155, 2S-175, 2D-320, 2D/2D2-600 PCR 650 F/A/X/T MIRL

RWY 14L: REIL. PAPI(P4L)—GA 3.0° TCH 75'. Bldg.  
RWY 32R: MALSR. PAPI(P4L)—GA 3.0° TCH 76'. Rgt tfc.  
RWY 04-22: H10000X100 (CONC-GRVD) S-75, D-100, 2S-127, 2D-175, 2D/2D2-475 PCR 565 R/A/W/T MIRL  
RWY 04: REIL. PAPI(P4L)—GA 3.0° TCH 49'. 0.4% down.  
RWY 22: REIL. VASI(V4L)—GA 3.0° TCH 50'. Rgt tfc. 0.3% up.

RWY 09-27: H3500X90 (CONC-GRVD) S-100, D-150, 2S-270, 2D-270, 2D/2D2-475 PCR 510 R/A/W/T RWY LGTS(NSTD) 0.3% up NW

RWY 27: Rgt tfc.  
RWY 18-36: H3327X75 (ASPH) S-75, D-170, 2S-175, 2D-300, 2D/2D2-400 PCR 120 R/A/W/T MIRL

RWY 18: Rgt tfc.  
RWY 14R-32L: H2936X75 (CONC) S-100, D-200, 2S-175, 2D-400, 2D/2D2-400 PCR 580 R/A/W/T

RWY 14R: Ground. Rgt tfc.

LAND AND HOLD—SHORT OPERATIONS

LDG RWY	HOLD—SHORT POINT	AVBL LDG DIST
RWY 04	14L-32R	4700
RWY 14L	04-22	7550
RWY 22	14L-32R	4650
RWY 32R	04-22	5050

RUNWAY DECLARED DISTANCE INFORMATION

RWY 04:	TORA-10000	TODA-10000	ASDA-10000	LDA-10000
RWY 09:	TORA-3500	TODA-3500	ASDA-3500	LDA-3500
RWY 14L:	TORA-13503	TODA-13503	ASDA-13503	LDA-13503
RWY 14R:	TORA-2936	TODA-2936	ASDA-2936	LDA-2936
RWY 22:	TORA-10000	TODA-10000	ASDA-10000	LDA-10000
RWY 27:	TORA-3500	TODA-3500	ASDA-3500	LDA-3500
RWY 32L:	TORA-2936	TODA-2936	ASDA-2936	LDA-2936
RWY 32R:	TORA-13503	TODA-13503	ASDA-13492	LDA-13492

SERVICE: S4 FUEL 100LL, JET A, A1+ OX1 LGT ACTVT MALSR Rwy 32R; REIL Rwy 04; PAPI Rwy 14L—CTAF. Rwy 09-27 mil ldg zone lgts only.

AIRPORT REMARKS: Attended continuously. Rwy 09-27 CLOSED exc mil ops; C-17 assault strip. Not vis fm ATCT. Birds invof arpt Apr and Oct. Rwy 14L conc tdz fst 3240 ft; Rwy 32R conc tdz fst 1490 ft. Class IV, ARFF Index A. PPR for air carrier ops with gtr than 30 pax seats 0600-1400Z† - 509-762-5363. ARFF dep Index D H24. Twy F not vis fm ATCT. No edge intensity lggt. Rwy 32R fst 10,000' grvd 150' wide. Twy G unlighted. Hvy mil jet ngt training 0300-1100Z†. When ATCT clsd annnc Indg intns—CTAF. Hvy jet trng sfc to 5000' wi 25 mi; psbl wake turb fm Rwy 09-27 and Rwy 14L-32R. ACR twy mov area only. All rapid rfl mil hel act ctc— C509-762-2222 or 131.625 for svc one hr prior to Indg. Procd to trml ramp. Rapid rfl avbl dalgt dly. Ldg fee. Landing fees ovr 12,500.

AIRPORT MANAGER: 509-762-5363

WEATHER DATA SOURCES: ASOS 119.05 (509) 762-5082. LAWRS.

COMMUNICATIONS: CTAF 118.25 ATIS 119.05 UNICOM 122.95

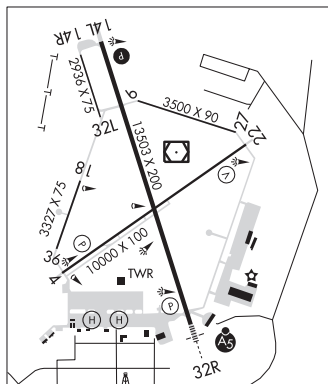
MOSES LAKE RCO 122.4 (SEATTLE RADIO)

® GRANT COUNTY APP/DEP CON 126.4 (1400-0600Z†)

® SEATTLE CENTER APP/DEP CON 126.1 (0600-1400Z†)

TOWER 128.0 (WEST) 118.25 (EAST) (1400-0600Z†) GND CON 121.9

AIRSPACE: CLASS D svc 1400-0600Z†; other times CLASS E.



CONTINUED ON NEXT PAGE

**WASHINGTON**  
CONTINUED FROM PRECEDING PAGE

**RADIO AIDS TO NAVIGATION:** NOTAM FILE MWH.

**MOSES LAKE (VH) (DH) VORW/DME** 115.0 MWH Chan 97 N47°12.65' W119°19.01' at fld. 1193/18E.

VOR unusable:

025°-040° byd 40 NM  
055°-070° byd 40 NM  
071°-081° byd 40 NM blo 28,000'  
175°-198° byd 40 NM blo 6,000'  
175°-198° byd 67 NM blo 10,000'  
175°-198° byd 70 NM  
200°-210° byd 40 NM  
220°-230° byd 40 NM  
240°-253° byd 40 NM blo 18,000'  
254°-260° byd 40 NM  
315°-345° byd 40 NM

**PELLY NDB (MHW/LOM)** 408 MW N47°06.94' W119°16.47' 324° 5.9 NM to fld. 1136/18E.

ILS 109.5 I-MWH Rwy 32R. Class IB. LOM PELLY NDB. ILS and COMLO unmonitored when ATCT clsd.

• • • • •  
**HELIPAD H1:** H50X50 (ASPH)

**HELIPAD H2:** H50X50 (ASPH)

**MOSES LAKE MUNI** (W2Ø) 2 NE UTC-8(-7DT) N47°08.52' W119°14.27'

SEATTLE

1203 B NOTAM FILE SEA

**RWY 16-34:** H2513X50 (ASPH) S-8 MIRL

**RWY 16:** PAPI(P2L)—GA 3.0°. Thld dsplcd 466'. Tree.

**RWY 34:** PAPI(P2L)—GA 3.0°. Thld dsplcd 253'. Bldg. Rgt tfc.

**SERVICE:** S4

**AIRPORT REMARKS:** Unattended. Bird haz. Pilots bring own ropes.

**AIRPORT MANAGER:** 509-764-3713

**COMMUNICATIONS:** CTAF/UNICOM 123.0

**CLEARANCE DELIVERY PHONE:** For CD ctc Grant County Apch at 509-762-2842, when Apch clsd ctc Seattle ARTCC at 253-351-3694.

**MOSES LAKE** N47°12.65' W119°19.01' NOTAM FILE MWH.

SEATTLE

**(VH) (DH) VORW/DME** 115.0 MWH Chan 97 at Grant Co Intl. 1193/18E.

H-1C, L-13A

VOR unusable:

025°-040° byd 40 NM  
055°-070° byd 40 NM  
071°-081° byd 40 NM blo 28,000'  
175°-198° byd 40 NM blo 6,000'  
175°-198° byd 67 NM blo 10,000'  
175°-198° byd 70 NM  
200°-210° byd 40 NM  
220°-230° byd 40 NM  
240°-253° byd 40 NM blo 18,000'  
254°-260° byd 40 NM  
315°-345° byd 40 NM

**RCO** 122.4 (SEATTLE RADIO)

**MOUNT CONSTITUTION** N48°40.79' W122°50.48'

SEATTLE

**RCO** 122.3 (SEATTLE RADIO)

L-1E