

RAWLINS MUNI/HARVEY FLD (RWL)(KRWL) 2 NE UTC-7(-6DT) N41°48.34' W107°12.02'**CHEYENNE**

6817 B NOTAM FILE RWL

H-3E, L-11E**RWY 04-22:** H7008X100 (ASPH-GRVD) S-30, D-60 MIRL**IAP**

1.0% up NE

RWY 04: PAPI(P4L)—GA 3.0° TCH 44'. Tank. Rgt tfc.**RWY 22:** REIL. PAPI(P4L)—GA 3.0° TCH 44'.**RWY 11-29:** H4322X60 (ASPH) S-12 MIRL 0.7% up W**RWY 29:** REIL. Rgt tfc.**SERVICE:** FUEL 100LL, JET A LGT ACTVT REIL Rwy 22 and 29; MIRL

Rwy 04-22 and Rwy 11-29—CTAF. PAPI Rwy 04 and 22 opr consly.

NOISE: Req all acft departing Rwy 29 make rgt turnout as soon as safety permits after tkf to avoid housing area and for noise abatement.**AIRPORT REMARKS:** Attended Mon-Fri 1400-0200Z†, Sat-Sun 1400-0000Z†. Birds invof arpt rwys. Phone nr for fuel aft hrs posted on FBO door. Rwy 11-29 ltd to acft up to 12,000 lbs GWT.**AIRPORT MANAGER:** 307-321-5566**WEATHER DATA SOURCES:** ASOS 118.525 (307) 328-0031.**COMMUNICATIONS:** CTAF/UNICOM 123.0

RCO 122.2 (CASPER RADIO)

Ⓡ **DENVER CENTER APP/DEP CON** 132.1**CLEARANCE DELIVERY PHONE:** For CD if una to ctc on FSS freq, ctc Denver ARTCC at 303-651-4257.**AIRSPACE:** CLASS E svc 1300-0500Z†; other times CLASS G.**RADIO AIDS TO NAVIGATION:** NOTAM FILE CPR.**CHEROKEE (VH) (H) VOR/DME** 115.0 CKW Chan 97 N41°45.34' W107°34.92' 065° 17.4 NM to fld. 7050/15E.

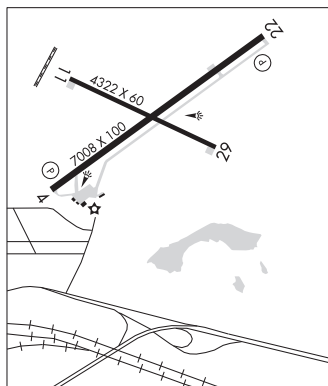
VOR unusable:

000°-015° byd 40 NM

082°-085° byd 40 NM

114°-116° byd 40 NM

125°-135° byd 40 NM

**RIVERTON****CENTRAL WYOMING RGNL** (RIW)(KRIW) 3 NW UTC-7(-6DT) N43°03.85' W108°27.59'**CHEYENNE**

5516 B Class I, ARFF Index A NOTAM FILE RIW MON Airport

H-3E, L-11E**RWY 10-28:** H8204X150 (ASPH-GRVD) S-85, D-110, 2S-140, 2D-165**IAP, AD**

PCR 280 F/B/X/T HIRL

RWY 10: REIL. PAPI(P4L)—GA 3.0° TCH 49'. P-line. 1.1% down.**RWY 28:** MALSR. PAPI(P4R)—GA 3.0° TCH 50'. 0.7% up.**RWY 01-19:** H4800X75 (ASPH-GRVD) S-30, D-50 PCR 140 F/D/X/T

MIRL 0.4% up N

RWY 01: REIL. PAPI(P2L)—GA 3.0° TCH 43'. P-line.**RWY 19:** REIL. PAPI(P2L)—GA 3.0° TCH 42'.**RUNWAY DECLARED DISTANCE INFORMATION****RWY 01:** TORA-4800 TODA-4800 ASDA-4800 LDA-4800**RWY 10:** TORA-8204 TODA-8204 ASDA-8204 LDA-8204**RWY 19:** TORA-4800 TODA-4800 ASDA-4800 LDA-4800**RWY 28:** TORA-8204 TODA-8204 ASDA-8204 LDA-8204**SERVICE:** S4 FUEL 100LL, JET A OX4 LGT ACTIVATE HIRL Rwy

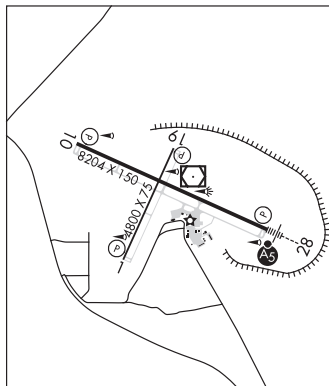
10-28, MIRL Rwy 01-19, REIL Rwy 01, Rwy 19 and Rwy 10 and

MALSR Rwy 28—CTAF. PAPI Rwy 01, Rwy 10, Rwy 19 and Rwy 28

opr 24 hrs.

AIRPORT REMARKS: Attended Mon-Fri 1400-0000Z†. For svc after hrs call 307-856-3599. Conds not monitored at ngt aft the last ACR arr til 0500L. See NOTAMS for the most up-to-date conds and upds. Multiple hot air balloons invof arpt dur July. PPR for unscheduled ops with more than 30 pax seats call arpt mgr 307-857-7780/307-856-7063. General aviation act not authorized on west ramp.**AIRPORT MANAGER:** 307-857-7780**WEATHER DATA SOURCES:** ASOS 121.425 (307) 556-2831.**COMMUNICATIONS:** CTAF/UNICOM 122.8

RIVERTON RCO 122.2 (CASPER RADIO)

Ⓡ **SALT LAKE CENTER APP/DEP CON** 133.25**CLEARANCE DELIVERY PHONE:** For CD if una to ctc on FSS freq, ctc Salt Lake ARTCC at 801-320-2568.**CONTINUED ON NEXT PAGE**

CONTINUED FROM PRECEDING PAGE

AIRSPACE: CLASS E.

RADIO AIDS TO NAVIGATION: NOTAM FILE RIW.

RIVERTON (VL) (DH) VORW/DME 114.05 RIW Chan 87(Y) N43°03.94' W108°27.33' at fld. 5458/10E.

VOR unusable:

133°-142° byd 40 NM

165°-281° byd 40 NM

322°-039° byd 40 NM

ILS 110.5 I-RIW Rwy 28. Class IE. Status is not remotely Monitored.

ROCK SPRINGS

SOUTHWEST WYOMING RGNL (RKS)(KRKS) 7 E UTC-7(-6DT) N41°35.65' W109°03.91'

6765 B ARFF Index—See Remarks NOTAM FILE RKS

RWY 09-27: H10002X150 (ASPH-GRVD) S-55, D-240, 2S-140, 2D-503 PCR 1557 F/A/X/T HIRL

RWY 09: ODALS. PAPI(P4L)—GA 3.0° TCH 50'. 0.3% up.

RWY 27: MALSR. PAPI(P4L)—GA 3.0° TCH 55'. 0.4% down.

RWY 03-21: H5228X75 (ASPH-PFC) S-59, D-88, 2D-159 PCR 112 F/D/X/T MIRL 0.3% up NE

RWY 03: REIL. PAPI(P2L)—GA 3.0° TCH 30'.

RWY 21: REIL. PAPI(P2L)—GA 3.0° TCH 30'.

RUNWAY DECLARED DISTANCE INFORMATION

RWY 03: TORA-5228 TODA-5228 ASDA-5228 LDA-5228

RWY 09: TORA-10002 TODA-10002 ASDA-10002 LDA-10002

RWY 21: TORA-5228 TODA-5228 ASDA-5228 LDA-5228

RWY 27: TORA-10002 TODA-10002 ASDA-10002 LDA-10002

SERVICE: S2 FUEL 100LL, JET A1+ OX 3, 4 LGT ACTVT MALSR Rwy 27; ODALS Rwy 09; REIL Rwy 03 & 21, HIRL

Rwy 09-27 & twy lgts—CTAF. PAPI Rwy 09, 27, 03 and 21 opr consly.

AIRPORT REMARKS: Attended 1100-0500Z†. Class I, ARFF Index A. PPR for air carrier ops with grt than 30 pax seats

0500Z-1100Z† call arpt ops - 307-352-6888. ARFF Index C avbl with 30 min notice - 307-352-6888.

AIRPORT MANAGER: 307-352-6880

WEATHER DATA SOURCES: AWOS-3 118.375 (307) 362-2541. SAWRS.

COMMUNICATIONS: CTAF/UNICOM 122.8

ROCK SPRINGS RCO 122.2 (CASPER RADIO)

® SALT LAKE CENTER APP/DEP CON 124.35

CLEARANCE DELIVERY PHONE: For CD if una to ctc on FSS freq, ctc Salt Lake ARTCC at 801-320-2568.

AIRSPACE: CLASS E.

RADIO AIDS TO NAVIGATION: NOTAM FILE RKS.

ROCK SPRINGS (VH) (DH) VORW/DME 116.0 OCS Chan 107 N41°35.41' W109°00.92' 263° 2.3 NM to fld.

6785/13E.

VOR unusable:

000°-007° byd 40 NM

008°-018° byd 40 NM blo 12,000'

008°-018° byd 62 NM

035°-045° byd 40 NM blo 9,500'

035°-045° byd 46 NM blo 11,200'

035°-045° byd 71 NM blo 18,000'

046°-060° byd 40 NM

066°-076° byd 40 NM blo 18,000'

078°-087° byd 40 NM

088°-098° byd 40 NM blo 21,000'

099°-110° byd 40 NM blo 18,000'

111°-121° byd 40 NM blo 12,000'

111°-121° byd 56 NM

122°-134° byd 40 NM blo 18,000'

135°-145° byd 40 NM

186°-195° byd 25 NM blo 14,000'

250°-258° byd 40 NM blo 18,000'

259°-267° byd 40 NM blo 15,000'

259°-267° byd 85 NM

268°-277° byd 40 NM blo 11,000'

268°-277° byd 55 NM blo 16,000'

DME unusable:

122°-127° byd 25 NM blo 12,000'

VOR unusable:

268°-277° byd 85 NM

ILS/DME 109.3 I-RKS Chan 30 Rwy 27. Class 1E.