

**BOISE AIR TRML/GOWEN FLD** (BOI)(KBOI) P (ANG ARNG) 3 S UTC-7(-6DT) N43°33.86'

**SALT LAKE CITY**

W116°13.37'

**H-1C, 3C, L-11B**

2872 B LRA Class I, ARFF Index C NOTAM FILE BOI

**IAP, AD**

**RWY 10L-28R:** H10000X150 (ASPH-GRVD) S-100, D-210, 2S-175, 2D-446, 2D/2D2-947 PCR 570 F/C/X/T HIRL

**RWY 10L:** REIL PAPI(P4R)—GA 3.0° TCH 53'. 0.5% up.

**RWY 28R:** PAPI(P4L)—GA 3.0° TCH 70'. Rgt tfc. 0.3% down.

**RWY 10R-28L:** H9763X150 (ASPH-GRVD) S-100, D-210, 2S-175, 2D-430, 2D/2D2-994 PCR 930 F/C/X/T HIRL CL

**RWY 10R:** ALSF2. TDZL. VASI(V4L)—GA 3.0° TCH 64'. RVR-TMR Rgt tfc. 0.5% up.

**RWY 28L:** MALS. TDZL. VASI(V4L)—GA 3.0° TCH 50'. RVR-TMR

**RUNWAY DECLARED DISTANCE INFORMATION**

**RWY 10L:**TORA-10000 TODA-10000 ASDA-10000 LDA-10000

**RWY 10R:**TORA-9763 TODA-9763 ASDA-9763 LDA-9763

**RWY 28L:**TORA-9763 TODA-9763 ASDA-9763 LDA-9763

**RWY 28R:**TORA-10000 TODA-10000 ASDA-10000 LDA-10000

**SERVICE:** S4 **FUEL** 100LL, JET A+ **OX** 1, 2, 3, 4 **LGT** Arpt lgt sched dusk to dawn. **MILITARY**— **JASU** 1(MC-1M) 6(AM32A-60)

4(A/M32A-86) **FUEL** A++ (Mil), A, A+ (1300-0600Z Mon-Fri;

1300-0300Z Sat-Sun and hol, call C208-338-1833, 25 min PN rqr, \$90 fee.) (NC-100LL) **FLUID** PRESAIR OIL O-133-148(Mil) SOAP

**AIRPORT REMARKS:** Attended continuously. Hel ops sfc-3500' wi 1 NM E, W and 5 NM S of Rwy 10R-28L. Bird act wi 5 NM Oct-Mar. SAID in use. Operate transponders with altitude reporting mode and ADS-B (if equipped) enabled on all airport surfaces. Arr/dep 0500-1400Z PPR due to locked gates—FBO. ANG: Opr 1400-2330Z clsd wknd, hol and down Mon. Tsnt svc NA aft hr. Svc and prkg—FBO. Tsnt svc gnd eqpt ltd otr than A-10. Tsnt must fuel/svc own acft. ANG: Nstd mrk: West prk ramp—White/black prk spot nr, age boxes. MIL off bus only; PPR for arr regardless of prkg; ANG ramp 72 hr PPR—<http://www.124thfighterwing.ang.af.mil>. PPR valid +/- 30 min. Tsnt full stop only. Go around or missed apch exp RT tfc. All twys CLSD to acft with wingspan over 170 ft except 1 hr PPR 208-972-8420. Twy J north of Twy F clsd to acft with wingspan over 94 ft when west arm/dearm pad in use. Twy B clsd btn Twy F and Twy C to acft with wingspan over 147 ft except 1 hr PPR 208-972-8420. Twy B clsd btn Twy C and Twy B1 to acft with wingspan over 118 ft when east arm/dearm pad in use. Twy S and Txl S clsd to acft over 170 ft wingspan btn Twy B and southeast cargo. Txl S clsd to acft over 94 ft wingspan east of southeast cargo. Coml ramp prkg—ctc gnd ctl bfr pushback. Ptns of Twy K and southwest ramp not vsbl to ATCT. East de-ice pad: Acft must use apron centerlines at all times and must not stop tail north. Only acft using customs may park in the white box on east de-ice pad. Flight Notification Service (ADCUS) avbl Mon-Fri 1500-0000Z; wkend if notified by Thurs 0000Z. Cstms/AG/IMG: 1400-0130Z Mon-Fri, fone 24 hr bfr arr 208-972-8730. Ltd svcs avbl for intl diversions without PN. Cstms only avbl drg publhd hrs or with PN. NOTE: See Special Notices—Arrival Alert.

**AIRPORT MANAGER:** 208-972-8420

**WEATHER DATA SOURCES:** ASOS 123.9 (208) 318-5005.

**COMMUNICATIONS:** D-ATIS 123.9 UNICOM 122.95

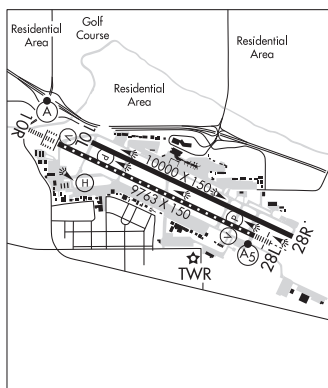
RCO 122.6 (BOISE RADIO)

Ⓡ **BIG SKY APP/DEP CON** 119.6 (More than 15 NM from BOI) 126.9 (Within 15 NM of BOI)

**TOWER** 118.1 119.0 **GND CON** 121.7 **CLNC DEL** 125.9

**PDC**

**AIRSPACE:** CLASS C svc ctc **APP CON**.



**CONTINUED ON NEXT PAGE**

