

LANDMARK USFS (ØUØ) 1 SE UTC-7(-6DT) N44°38.53' W115°32.00'

GREAT FALLS

6662 NOTAM FILE BOI

RWY 16-34: 4000X100 (TURF-DIRT) 0.3% up S

RWY 16: Trees.

RWY 34: Tree.

AIRPORT REMARKS: Unattended. No telephone avbl at arpt. Wildlife on and in/ov arpt. No winter maintenance. No line of sight between rwy ends. Arpt located in high mountain valley surrounded by high terrain. Rwy 16-34 first 800-1000 ft of Rwy 34 may be soft and soggy due to late snow melt til Jun of each year. Rwy 16-34 edges marked with white rock markers.

AIRPORT MANAGER: (208) 382-7400

COMMUNICATIONS: CTAF 122.9

CLEARANCE DELIVERY PHONE: For CD ctc Salt Lake ARTCC at 801-320-2568.

LEADORE (UØØ) 0 S UTC-7(-6DT) N44°40.39' W113°21.15'

GREAT FALLS

6029 NOTAM FILE BOI

RWY 11-29: 3500X140 (GRVL-DIRT) RWY LGTS(NSTD) 0.5% up E

RWY 11: Pole.

RWY 29: Fence.

RWY 16-34: 2903X90 (TURF) 1.4% up S

RWY 16: Pole.

RWY 34: Fence.

SERVICE: LGT Rwy 11-29 lgts are inop indef.

AIRPORT REMARKS: Unattended. Agricultural irrigation equipment +15 ft may be located within 50 ft of Rwy end 34. First 2300 ft of Rwy 11 is gravel, rest is dirt. Rwy 16-34 rwy sfc has improved and has a fair condition. Rwy 11-29; 16-34; rws now mkd by w cement boundary markers; +3 ft sagebrush adj to all rwy edges.

AIRPORT MANAGER: 208-940-2171

COMMUNICATIONS: CTAF 122.9

CLEARANCE DELIVERY PHONE: For CD ctc Salt Lake ARTCC at 801-320-2568.

LEE WILLIAMS MEML (See MIDVALE on page 69)

LEMHI CO (See SALMON on page 83)

LEWISTON

LEWISTON/NEZ PERCE CO (LWS)(KLWS) 2 S UTC-8(-7DT) N46°22.47' W117°00.92'

SEATTLE

1442 B TPA—See Remarks Class I, ARFF Index A NOTAM FILE LWS MON Airport

H-1C, L-13B

RWY 08-26: H6511X150 (ASPH-GRVD) S-120, D-250, 2S-175,

2D-550, 2D/2D2-1076 PCR 720 F/B/W/T HIRL

RWY 08: REIL. VASI(V4L)—GA 3.0° TCH 45'. Rgt tfc.

RWY 26: MALSR. PAPI(P4L)—GA 3.0° TCH 51'. Tree.

RWY 12-30: H5003X75 (ASPH-GRVD) S-97, D-169, 2S-119,

2D-309 PCR 360 F/A/X/T MIRL 1.4% up SE

RWY 12: REIL. PAPI(P2L)—GA 3.0° TCH 40'. Rgt tfc.

RWY 30: PAPI(P2L)—GA 3.0° TCH 45'. Thld dsplcd 253'. Antenna.

RUNWAY DECLARED DISTANCE INFORMATION

RWY 08: TORA-6511 TODA-6511 ASDA-6511 LDA-6511

RWY 12: TORA-5003 TODA-5003 ASDA-4750 LDA-4750

RWY 26: TORA-6511 TODA-6511 ASDA-6511 LDA-6511

RWY 30: TORA-5003 TODA-5003 ASDA-5003 LDA-4750

SERVICE: S4 FUEL 100, 100LL, JET A LGT When ATCT clsd ACTVT

MALSR Rwy 26; REIL Rwy 08; PAPI Rwy 12 and Rwy 30—CTAF.

Rwy 12 PAPI unusbl byd 3.5 NM.

AIRPORT REMARKS: Attended 1330-0500Z±. CLSD to unskd ACR opns with more than 30 psgr seats excp PPR call amgr 208-790-1050.

Frequent no radio AG acft activity in/ov arpt. LWS apn E hngr ramp clsd to acrs exc GA and acft wingspan less than 58 ft. TPA—Heavy and turbine powered acft 3002(1560) all others 2502(1060).

AIRPORT MANAGER: 208-748-9132

WEATHER DATA SOURCES: ASOS 135.575 (208) 285-3657. LAWRS.

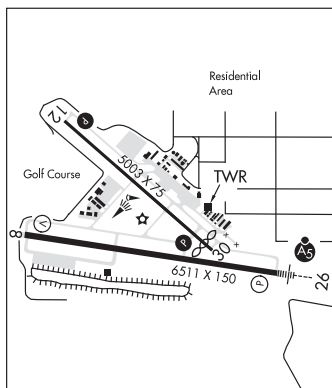
COMMUNICATIONS: CTAF 119.4 UNICOM 122.95

RCO 122.3 (BOISE RADIO)

® SEATTLE CENTER APP/DEP CON 123.95

TOWER 119.4 (1400-0600Z±) GND CON 121.9

CLEARANCE DELIVERY PHONE: For CD if una to ctc on FSS freq, ctc Seattle ARTCC at 253-351-3694.



CONTINUED ON NEXT PAGE

CONTINUED FROM PRECEDING PAGE

AIRSPACE: CLASS D svc 1400-0600Z†; other times CLASS E.

RADIO AIDS TO NAVIGATION: NOTAM FILE LWS.

NEZ PERCE (VL) (L) VORW/DME 114.45 MQG Chan 91(Y) N46°22.89' W116°52.17' 246° 6.1 NM to fld.
1734/20E. DME unmonitored.

VOR unusable:

049°-059° byd 40 NM blo 13,000'

049°-059° byd 94 NM

060°-098° byd 40 NM

060°-120° byd 20 NM blo 12,000'

099°-109° byd 40 blo 14,000'

099°-109° byd 58 NM

110°-138° byd 40 NM

121°-165° byd 30 NM blo 12,000'

139°-149° byd 40 NM blo 13,000'

139°-149° byd 56 NM

150°-192° byd 40 NM

193°-207° byd 40 blo 14,000'

208°-240° byd 40

241°-251° byd 40 NM blo 7,000'

241°-251° byd 54 NM

252°-010° byd 40 NM

270°-330° byd 30 NM blo 9,000'

DME unusable:

060°-120° byd 20 NM blo 12,000'

121°-165° byd 30 NM blo 12,000'

270°-330° byd 30 NM blo 9,000'

ILS 109.7 I-LWS Rwy 26. Class IE. Unmonitored when ATCT clsd. Autopilot coupled approaches not authorized blo 2,500'.

SNAKE RIVER SPB (78U) 3 SW UTC-8(-7DT) N46°21.88' W117°03.72'

SEATTLE

735 NOTAM FILE BOI

WATERWAY N-S: 3000X150 (WATER)**WATERWAY S:** P-line.**SEAPLANE REMARKS:** Attended Apr-Oct 1500Z†-dusk and Nov-Mar irregularly. P-lines cross Snake River north, south, above and below Indg area. Bridge across Snake River 2 NM north of Indg area. Lndg area within Lewiston-Nez Perce County arpt tfc area; ctc LWS ATCT on Twr/CTAF 119.4. Waterway N-S waterlane length and width varies. Heavy boat tfc in vicinity of seaplane base. No beaching gear or mooring buoys avbl. Acft may dock at marina if space is avl.**AIRPORT MANAGER:** 208-799-5015**COMMUNICATIONS:** CTAF 122.9**CLEARANCE DELIVERY PHONE:** For CD ctc Seattle ARTCC at 253-351-3694.**LOWER LOON CREEK** (See CHALLIS on page 45)**LOWMAN****WARM SPRINGS CREEK** (ØU1) 13 NE UTC-7(-6DT) N44°08.53' W115°18.84'

SALT LAKE CITY

4831 NOTAM FILE BOI

RWY 02-20: 2850X135 (TURF)**RWY 02:** Tree.**RWY 20:** Trees.**AIRPORT REMARKS:** Unattended. No telephone avbl at arpt. Recommend land Rwy 02, tkf Rwy 20, when wind conditions allow.

No line of sight between rwy ends. No winter maintenance. Rwy 02-20 edges and thlds marked with white rocks.

AIRPORT MANAGER: 208-334-8775**COMMUNICATIONS:** CTAF 122.9**CLEARANCE DELIVERY PHONE:** For CD ctc Salt Lake ARTCC at 801-320-2568.**LUCILE****BIG BAR USFS** (1DA) 9 W UTC-8(-7DT) N45°32.07' W116°31.86'

SALT LAKE CITY

1236 NOTAM FILE BOI

RWY 17-35: 1203X30 (TURF-DIRT)**RWY 17:** Trees.**RWY 35:** Hill.**AIRPORT REMARKS:** Arpt is not mntnd durg winter months; use at own risk.**AIRPORT MANAGER:** 541-963-7171**COMMUNICATIONS:** CTAF 122.9**CLEARANCE DELIVERY PHONE:** For CD ctc Seattle ARTCC at 253-351-3694.