

POCATELLO RGNL (PIH)(KPIH) 7 NW UTC-7(-6DT) N42°54.59' W112°35.76'

SALT LAKE CITY

4452 B Class I, ARFF Index A NOTAM FILE PIH

H-3D, L-11C

RWY 03-21: H9059X150 (ASPH-PFC) S-120, D-245, 2S-175, 2D-428, 2D/2D2-965 PCR 615 F/B/X/T HIRL

RWY 03: REIL. PAPI(P4L)—GA 3.0° TCH 53'.

RWY 21: MALSR, PAPI(P4L)—GA 3.0° TCH 52'. RVR-T

RWY 17-35: H7150X100 (ASPH-GRVD) S-120, D-245, 2D-428, 2D/2D2-965 PCR 615 F/B/X/T MIRL

RWY 17: REIL. PAPI(P4L)—GA 3.0° TCH 45'.

RWY 35: PAPI(P4L)—GA 3.0° TCH 45'. Pole.

RUNWAY DECLARED DISTANCE INFORMATION

RWY 03: TORA-9059 TODA-9059 ASDA-9059 LDA-9059

RWY 17: TORA-7150 TODA-7150 ASDA-7150 LDA-7150

RWY 21: TORA-9059 TODA-9059 ASDA-9059 LDA-9059

RWY 35: TORA-7150 TODA-7150 ASDA-7150 LDA-7150

SERVICE: S4 FUEL 100LL, JET A1, A1+ OX 3, 4 LGT Aft ATCT clsd
ACTVT MALSR Rwy 21; REIL Rwy 17 and 03; PAPI Rwy Rwy 21, 17 & 35; MIRL Rwy 17-35; HIRL Rwy 03-21—CTAF. PAPI Rwy 03 opr consly.

AIRPORT REMARKS: Attended 1300-0500Z†. For service other times call 1-800-350-0737. Flocks of waterfowl in vof arpt. Afd cond unmonitored 0630-1300Z† daily exc air carrier ops and 24 hr PPR 208-234-6154 or 208-241-7949. Additional fees apply. Twy G has no edge lgts or reflectors, rstd to day use only. Radio ctl acct 1 mile east of arpt blo 400' AGL. 72 hrs PPR for unscheduled air carrier ops with more than 30 pax seats call admin 208-234-6154 or ops 208-241-7949.

AIRPORT MANAGER: 208-234-6154

WEATHER DATA SOURCES: ASOS 135.625 (208) 278-2021.

COMMUNICATIONS: CTAF 119.1 ATIS 135.625 208-232-2269 UNICOM 122.95

RCO 122.3 (BOISE RADIO)

Ⓡ SALT LAKE CENTER APP/DEP CON 128.35

TOWER 119.1 (1300-0500Z†) **GND CON** 121.9

CLEARANCE DELIVERY PHONE: For CD if una to ctc on FSS freq, ctc Salt Lake ARTCC at 801-320-2568.

AIRSPACE: CLASS D svc 1300-0500Z†; other times CLASS E.

RADIO AIDS TO NAVIGATION: NOTAM FILE PIH.

(VH) (H) VOR/DME 112.6 PIH Chan 73 N42°52.22' W112°39.13' 029° 3.4 NM to fld. 4433/17E.

VOR unusable:

030°-082° byd 40 NM

083°-091° byd 40 NM blo 18,000'

092°-102° byd 40 NM blo 21,000'

103°-220° byd 40 NM

107°-120° byd 25 NM blo 17,000'

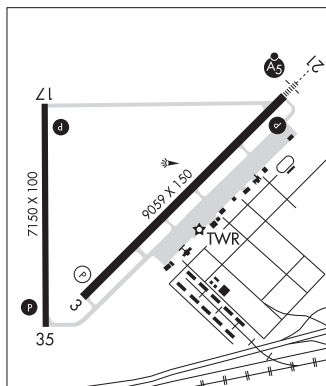
DME unusable:

060°-125° byd 25 NM blo 17,000'

165°-175° byd 35 NM blo 13,000'

ILS/DME 110.3 I-PIH Chan 40 Rwy 21. Class IE. Unmonitored when ATCT clsd.

COMM/NAV/WEATHER REMARKS: Freq 121.5 not avbl at twr. FBO monitors 122.95 and 123.0.

**PORTHILL****ECKHART INTL** (1S1) 0 W UTC-8(-7DT) N48°59.43' W116°30.12'

GREAT FALLS

1758 LRA NOTAM FILE BOI

RWY 15-33: 3650X175 (TURF)

RWY 15: Trees.

RWY 33: Road.

AIRPORT REMARKS: Unattended. Rwy 15 do not use asph twy ptn for tkof. Recommend land Rwy 33; tkf Rwy 15 when wind condition permits. No winter maintenance. Rwy 15-33 edges and thld marked with white rocks. +25' hop poles located adjacent to both sides of rwy. Acft prkg ltd to two hrs in cust trml area; longer term prkg avbl to the west of Rwy end 15-btn asph twy & plant.

AIRPORT MANAGER: 208-334-8775

COMMUNICATIONS: CTAF/UNICOM 122.8

CLEARANCE DELIVERY PHONE: For CD ctc Seattle ARTCC at 253-351-3694.