

LAFAYETTE RGNL/PAUL FOURNET FLD (LFT)(KLFT) P (AR) 2 SE UTC-6(-5DT)

HOUSTON

H-7D, L-21B, 22E, GOAC

IAP, AD

N30°12.30' W91°59.27'

41 B LRA Class I, ARFF Index B NOTAM FILE LFT

RWY 04R-22L: H800X150 (ASPH-GRVD) S-140, D-170, 2S-175, 2D-290 PCR 670 F/B/X/T HIRL

RWY 04R: REIL. PAPI(P4L)—GA 3.0° TCH 50'. RVR-R Pole. Rgt tfc.

RWY 22L: MALSR. PAPI(P4L)—GA 3.0° TCH 50'. RVR-T Thld dspcd 342'. Trees.

RWY 11-29: H5403X150 (ASPH-GRVD) S-85, D-110, 2S-140, 2D-175 PCR 720 F/D/X/T MIRL

RWY 11: REIL. PAPI(P4L)—GA 3.0° TCH 35'. Trees. Rgt tfc.

RWY 29: REIL. PAPI(P4L)—GA 3.0° TCH 50'. Thld dspcd 248'. Tree.

RWY 04L-22R: H4098X75 (ASPH) S-25, D-32 PCN 11 F/D/X/T MIRL No Part 121/Part 380 Ops

RWY 04L: REIL. PAPI(P2L)—GA 3.0° TCH 26'. Tree.

RWY 22R: REIL. PAPI(P2L)—GA 3.0° TCH 26'. Tree. Rgt tfc.

**RUNWAY DECLARED DISTANCE INFORMATION**

RWY 04L:TORA-4098 TODA-4098 ASDA-4098 LDA-4098

RWY 04R:TORA-8000 TODA-8000 ASDA-8000 LDA-8000

RWY 11: TORA-5403 TODA-5403 ASDA-5403 LDA-5403

RWY 22L:TORA-8000 TODA-8000 ASDA-8000 LDA-7659

RWY 22R:TORA-4098 TODA-4098 ASDA-4098 LDA-4098

RWY 29: TORA-5403 TODA-5403 ASDA-5403 LDA-5155

**ARRESTING GEAR/SYSTEM**

RWY 04R: EMAS

RWY 11: EMAS

RWY 22L: EMAS

RWY 29: EMAS

**SERVICE:** S4 **FUEL** 100LL, JET A, A+ **OX** 1, 4 **LGT** Dusk-Dawn. When ATCT clsd ACTVT MALSR Rwy 22L—CTAF; MIRL Rwy 04L-22R not avbl. Rwy 11-29; Rwy 04L/22R and Rwy 04R/22L lgttd distance remaining signs.

**MILITARY—A-GEAR** Rwy 22L EMAS 380.67' x 170'. Rwy 04R EMAS 223' x 170'. Rwy 29 EMAS 170' x 448'. **FUEL** A+ (C337-288-3940.) (NC-100LL, A)

**AIRPORT REMARKS:** Attended continuously. Migratory birds on and invof arpt. For A+ call 337-703-4800. PPR for unscheduled ACR opns with more than 30 psgr seats call amgr 337-266-4400. Rwy 04L-22R CLOSED 0430-1130Z†. Ctc ground control prior to push back from terminal. 155' oil rig 1 NM southeast of arpt. Use caution: twr blind spots on Twy M east and west of Twy E. Taxilane A and all prkg ramps are non-movement areas. ATCT has ltd vis of north prkg ramp.

**AIRPORT MANAGER:** 337-703-4800**WEATHER DATA SOURCES:** ASOS 134.05 (337) 262-2757.**COMMUNICATIONS:** CTAF 118.5 ATIS 134.05 UNICOM 122.95

RCO 122.3 (DE RIDDER RADIO)

② APP/DEP CON 121.1 (020°-210°) 128.7 (211°-019°) (1130-0430Z†)

② HOUSTON CENTER APP/DEP CON 126.35 (0430-1130Z†)

TOWER 118.5 (1130-0430Z†) GND CON 121.8 CLNC DEL 125.55

**CLEARANCE DELIVERY PHONE:** For CD if una to ctc on FSS freq, ctc Houston ARTCC at 281-230-5622.**AIRSPACE:** CLASS C svc ctc APP CON svc 1130-0430Z†; other times CLASS E.**RADIO AIDS TO NAVIGATION:** NOTAM FILE LFT.

(L) (L) VORTACW 109.8 LFT Chan 35 N30°11.63' W91°59.55' at fld. 36/3E.

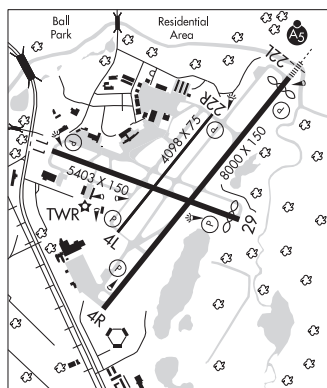
TACAN AZIMUTH unusable:

295°-320° blo 4,000'

LAFFS NDB (LOMW) 375 LF N30°17.36' W91°54.47' 216° 6.5 NM to fld. 21/3E.

ILS/DME 110.9 I-TYN Chan 46 Rwy 04R. Class IE.

ILS/DME 109.5 I-LFT Chan 32 Rwy 22L. Class IE. LOM LAFFS NDB. ILS and LOM unmonitored when ATCT clsd.



LAFFS N30°17.36' W91°54.47' NOTAM FILE LFT.

NDB (LOMW) 375 LF 216° 6.5 NM to Lafayette Rgnl/Paul Fournet Fld. 21/3E.

HOUSTON

L-21B, 22E