

LAKE CHARLES RGNL (LCH)(KLCH) 5 S UTC-6(-5DT) N30°07.57' W93°13.40'

HOUSTON

15 B LRA Class I, ARFF Index B NOTAM FILE LCH MON Airport

H-7D, L-21B, 22E, GOAW

RWY 15-33: H6500X150 (CONC-GRVD) S-100, D-145, 2S-175,

IAP, AD

2D-260 PCR 287 R/D/X/T HIRL

RWY 15: MALS. PAPI(P4L)—GA 3.0° TCH 70'. RVR-TM Pole. Rgt ttc.**RWY 33:** MALS. PAPI(P4R)—GA 3.0° TCH 50'. RVR-M**RWY 05-23:** H5200X100 (ASPH) S-70, D-90, 2S-114, 2D-140

PCR 89 F/D/X/T MIRL

RWY 05: REIL. PAPI(P4L)—GA 3.0° TCH 51'. Tree.**RWY 23:** REIL. VASI(V4L)—GA 3.0° TCH 47'. Rgt ttc.**RUNWAY DECLARED DISTANCE INFORMATION****RWY 05:** TORA-5200 TODA-5200 ASDA-5200 LDA-5200**RWY 15:** TORA-6500 TODA-6500 ASDA-6500 LDA-6500**RWY 23:** TORA-5200 TODA-5200 ASDA-5200 LDA-5200**RWY 33:** TORA-6500 TODA-6500 ASDA-6500 LDA-6500**SERVICE:** S4 FUEL 100LL, JET A1+ LGT When twr clsd ACTIVATE

MALS. Rwy 15, MALS. Rwy 33, HIRL Rwy 15-33, MIRL Rwy

05-23—CTAF, PAPI Rwy 33 opr consly.

AIRPORT REMARKS: Attended 1100-0430Z†. Birds on and in vicinity of arpt.

Svc available on request Mon-Fri 1400-2230Z† except holidays call

arpt manager 337-477-6051 ext 0. Control twr blind spot on Taxiway

J. Rwy 15-33 south 900' grooved. Flight Notification Service

(ADCUS) available.

AIRPORT MANAGER: 337-477-6051**WEATHER DATA SOURCES:** ASOS (337) 240-9596 LAWRS.**COMMUNICATIONS:** CTAF 120.7 ATIS 118.75 UNICOM 122.95

RCO 122.3 (DE RIDDER RADIO)

Ⓡ APP/DEP CON 119.35 (West) 119.8 (East) 119.75 (Offshore helicopter opr) (1200-0400Z†)

Ⓡ HOUSTON CENTER APP/DEP CON 124.7 (0400-1200Z†)

TOWER 120.7 (1200-0400Z†) GND CON 121.8 CLNC DEL 126.25

CLEARANCE DELIVERY PHONE: For CD if una to ctc on FSS freq, ctc Houston ARTCC at 281-230-5622.**AIRSPACE:** CLASS D svc 1200-0400Z†; other times CLASS E.

TRSA ctc APP CON within 30 NM

RADIO AIDS TO NAVIGATION: NOTAM FILE LCH.

(VH) (H) VORTACW 113.4 LCH Chan 81 N30°08.49' W93°06.33' 254° 6.2 NM to fld. 20/7E.

VOR unusable:

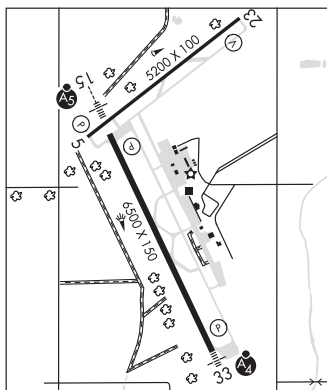
181°-359° byd 30 NM blo 1,500'

198°-203° byd 40 NM blo 11,000'

198°-203° byd 61 NM

ILS/DME 109.1 I-LCH Chan 28 Rwy 15. Class IB. Unmonitored when ATCT clsd.

ASR (1200-0400Z†)

**LAKE PROVIDENCE****BYERLEY** (ØM8) 2 N UTC-6(-5DT) N32°49.55' W91°11.26'

MEMPHIS

106 B NOTAM FILE DRI

L-18F

RWY 17-35: H3196X75 (ASPH) S-4**RWY 17:** Thld dsplcd 175'. Road.**RWY 35:** Thld dsplcd 530'. Trees.**SERVICE:** LGT Rwy 17-35 dsplcd thld not lighted. Rotating bcn OTS indef.**AIRPORT REMARKS:** Unattended. Day VFR only. Ctc amgr for dsgrnd ramp space for pub use. Rwy 17 dsplcd thld markings nstd, no arrows or chevrons. No hold short line east side of Rwy 35. West apron gravel and potholes.**AIRPORT MANAGER:** (318) 282-9263**COMMUNICATIONS:** CTAF 122.9**CLEARANCE DELIVERY PHONE:** For CD ctc Memphis ARTCC at 901-368-8453/8449.**RADIO AIDS TO NAVIGATION:** NOTAM FILE GLH.**GREENVILLE (VL) (DH) VOR/DME** 114.25 GLH Chan 89(Y)

N33°31.41' W90°58.98' 190° 43.0 NM to fld. 130/4E.

VOR unusable:

144°-157° byd 40 NM

