

TALLULAH**VICKSBURG TALLULAH RGNL** (TVR)(KTVR) 9 E UTC-6(-5DT) N32°21.10' W91°01.66'

86 B TPA—1086(1000) NOTAM FILE TVR

RWY 18-36: H5002X100 (ASPH) S-60, D-75 MIRL**RWY 18:** REIL. PAPI(P4L)—GA 3.0° TCH 50'. Trees.**RWY 36:** SSALR. PAPI(P4L)—GA 3.0° TCH 50'. Trees.**RUNWAY DECLARED DISTANCE INFORMATION****RWY 18:** TORA—5002 TODA—5002 ASDA—5002 LDA—5002**RWY 36:** TORA—5002 TODA—5002 ASDA—5002 LDA—5002**SERVICE:** S4 **FUEL** 100LL, JET A **LGT** MIRL Rwy 18-36, REIL Rwy 18, SSALR Rwy 36 preset low ints dusk-dawn, to increase ints ACTVT—CTAF.**AIRPORT REMARKS:** Attended 1300-2330Z‡. Holidays 1600-2200Z‡. For arpt mgr aft hrs call 318-366-1615. PAEW on arpt. Migratory birds invof arpt. Crop dusting activity 2 NM radius of arpt. Ctc arpt mgr for dsngnd ramp space for pub use. Pilots in tfc pattern are requested to avoid over flight of Mound, LA 1/2 mile south and east of Rwy 36.**AIRPORT MANAGER:** 318-574-5841**WEATHER DATA SOURCES:** ASOS 118.525 (318) 574-4866.**COMMUNICATIONS:** CTAF/UNICOM 123.0**MEMPHIS CENTER APP/DEP CON** 132.5**CLEARANCE DELIVERY PHONE:** For CD ctc Memphis ARTCC at 901-368-8453/8449.**RADIO AIDS TO NAVIGATION:** NOTAM FILE GWO.**MAGNOLIA (VH) (H) VORTACW** 113.2 MHz Chan 79 N32°26.04' W90°05.99' 265° 47.4 NM to fld. 407/1W.

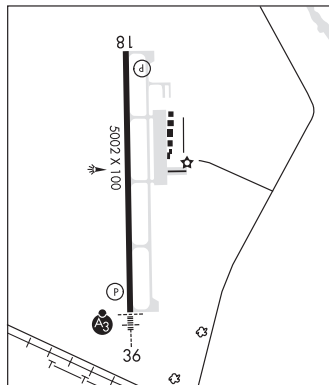
TACAN AZIMUTH unusable:

240°-275° byd 30 NM blo 2,000'

DME unsl 240-275 byd 30 NM blo 2000'

TALLULAH NDB (MHW/LOM) 344 TKH N32°14.72' W91°01.55' 357° 6.4 NM to fld. 79/2E. NOTAM FILE DRI.

ILS 109.7 I-TVR Rwy 36. Class ID.

**MEMPHIS**
H-6J, L-18F
IAF**THIGPEN FLD** (See BAY SPRINGS on page 148)**TISHOMINGO CO** (See BELMONT on page 150)**TRENT LOTT INTL** (See PASCAGOULA on page 184)**TUNICA****RALPH M SHARPE** (3ØM) 2 S UTC-6(-5DT) N34°39.55' W90°22.57'

195 NOTAM FILE GWO

RWY 01-19: H2508X14 (ASPH)**RWY 01:** Thld dspcd 108'.**AIRPORT REMARKS:** Attended Mar-Oct dalgt hrs, Nov-Feb Mon-Fri irregularly, call manager. Rwy 01-19 80' trees E side S of rwy violate 7:1 trsn slp. Call ahead to reserve hangar transient storage. Rwy 01 is 14 ft wid by 1800 ft long; Rwy 19 is 18 ft wid by 708 ft long.**AIRPORT MANAGER:** 662-363-1461**COMMUNICATIONS:** CTAF/UNICOM 122.8**CLEARANCE DELIVERY PHONE:** For CD ctc Memphis Apch at 901-842-8457.**MEMPHIS**