

**CHATTANOOGA SKY HARBOR** (92F) 3 SW UTC-6(-5DT) N34°22.13' W98°40.93'

DALLAS-FT WORTH  
L-17B

1135 B NOTAM FILE MLC

RWY 17-35: H3400X60 (ASPH) S-7 MIRL

AIRPORT REMARKS: Attended irregularly. Ultralights on and invof arpt.

AIRPORT MANAGER: 580-597-3390

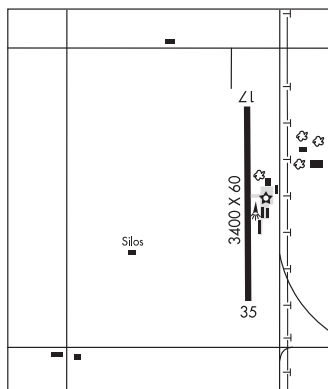
COMMUNICATIONS: CTAF 122.9

CLEARANCE DELIVERY PHONE: For CD ctc Fort Worth ARTCC at 817-858-7584.

RADIO AIDS TO NAVIGATION: NOTAM FILE SPS.

WICHITA FALLS (VH) (H) VORTACW 112.7 SPS Chan 74 N33°59.24'

W98°35.61' 339° 23.3 NM to fld. 1133/10E.



**CHEROKEE MUNI** (405) 2 N UTC-6(-5DT) N36°47.30' W98°21.51'

WICHITA  
L-15D

1179 B NOTAM FILE MLC

RWY 17-35: H3770X60 (ASPH) S-4 MIRL

RWY 17: Thld dsplcd 200'.

RWY 35: Thld dsplcd 200'.

SERVICE: FUEL 100LL LGT SS-SR ACTVT MIRL Rwy 17-35-CTAF.

AIRPORT REMARKS: Unattended.

AIRPORT MANAGER: 580-596-3052

COMMUNICATIONS: CTAF 122.9

CLEARANCE DELIVERY PHONE: For CD ctc Vance Apch at 580-213-6765.

When Vance Apch is clsd, ctc Kansas City ARTCC at 913-254-8508.

