

ARLINGTON MUNI (GKY)(GKGY) 4 S UTC-6(-5DT) N32°39.83' W97°05.66'

628 B NOTAM FILE GKY

RWY 16-34: H6080X100 (CONC) S-60 MIRL 0.5% up NW

RWY 16: REIL. PAPI(P4L)—GA 3.0° TCH 42'.

RWY 34: MALSR. PAPI(P4L)—GA 3.0° TCH 55'. Trees.

SERVICE: S4 **FUEL** 100LL, JET A, A+ **OX** 4 **LGT** MIRL Rwy 16-34 preset med intst; higher intst by ATCT req. When ATCT clsd ACTVT MALSR Rwy 34—CTAF.

AIRPORT REMARKS: Attended continuously. 100LL full and self serve. Exstvs hel tfc west of rwy.

AIRPORT MANAGER: 817-459-5571

WEATHER DATA SOURCES: ASOS 127.375 (817) 557-0251.

COMMUNICATIONS: CTAF 128.625

Ⓡ **LONE STAR APP/DEP CON** 118.1 124.3 125.2 125.8 135.975 (North)
125.8 135.975 (South) 118.1 125.8

TOWER 128.625 (1300-0300Z±) **GND CON/CLNC DEL** 121.875

CLNC DEL 118.85 (RGNL APP CON when twr clsd)

AIRSPACE: CLASS D svc 1300-0300Z±; other times CLASS G.

RADIO AIDS TO NAVIGATION: NOTAM FILE FTW.

MAVERICK (VH) (H) VORW/DME 113.1 TTT Chan 78 N32°52.15'

W97°02.43' 186° 12.6 NM to fld. 536/6E.

All acft arriving DFW are requested to turn DME off until departure due to traffic overload of Maverick DME

DME unusable:

180°-190° byd 10 NM

240°-260° byd 20 NM blo 3,500'

VOR unusable:

105°-110° byd 40 NM

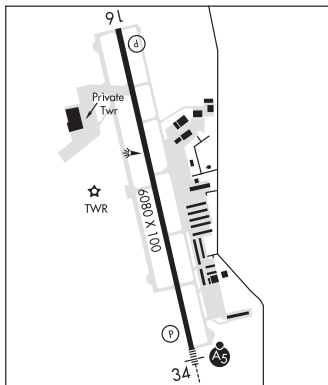
ILS/DME 111.55 I-GKY Chan 52(Y) Rwy 34. Class IE. LOC unusable byd 15° right of course. Unmonitored when ATCT clsd.

DALLAS-FT WORTH

COPTER

H-6H, L-17C, A

IAP, AD



ARVILLA N33°03.98' W96°03.68' NOTAM FILE GVT.

(T) **TACAN** 109.6 MJF Chan 33 at Majors. 543/5E.

DME unusable:

024°-034° byd 16 NM blo 3,000'

080°-095° byd 5 NM

TACAN AZIMUTH unusable:

024°-034° byd 16 NM blo 3,000'

080°-095° byd 5 NM

212°-222° byd 12 NM blo 3,500'

DALLAS-FT WORTH

L-17D

ASPERMONT

STONEWALL CO (T60) 1 NE UTC-6(-5DT) N33°10.22' W100°11.84'

1744 B NOTAM FILE FTW

RWY 17-35: H4000X60 (ASPH) S-12.5 MIRL 0.7% up S

RWY 35: P-line.

AIRPORT REMARKS: Unattended. Agricultural activity May-Sep. Gate locked.

Call AMGR for combination or access. 940-200-0894 AMGR cell.

AIRPORT MANAGER: 940-989-3393

COMMUNICATIONS: CTAF 122.9

CLEARANCE DELIVERY PHONE: For CD ctc Fort Worth ARTCC at 817-858-7584.

RADIO AIDS TO NAVIGATION: NOTAM FILE ABI.

ABILENE (VH) (H) VORTACW 113.7 ABI Chan 84 N32°28.88'

W99°51.81' 328° 44.6 NM to fld. 1809/10E.

VOR unusable:

163°-236° byd 40 NM blo 18,000'

237°-247° byd 40 NM blo 7,000'

248°-250° byd 40 NM blo 18,000'

251°-255° byd 40 NM blo 4,500'

251°-255° byd 46 NM blo 18,000'

DALLAS-FT WORTH

L-17B

