

CONTINUED FROM PRECEDING PAGE

AIRSPACE: CLASS C svc ctc APP CON.

RADIO AIDS TO NAVIGATION: NOTAM FILE AUS.

CENTEX (VH) (H) VORTACW 112.8 CWK Chan 75 N30°22.71' W97°31.79' 207° 13.2 NM to fld. 593/6E.

VOR unusable:

180°-190° byd 40 NM

200°-210° byd 40 NM

ILS/DME 110.5 I-VNKC Chan 42 Rwy 18L. Class IIIE. DME also serves Rwy 36R.

ILS/DME 110.95 I-GFQ Chan 46(Y) Rwy 18R. Class IE. DME also serves Rwy 36L.

ILS/DME 110.95 I-BSM Chan 46(Y) Rwy 36L. Class IE. DME also serves Rwy 18R.

ILS/DME 110.5 I-HCE Chan 42 Rwy 36R. Class IIE. DME also serves Rwy 18L. DME unusable byd 25° left of course.

COMM/NAV/WEATHER REMARKS: Ctc ramp ctl at 126.225 prior to entry/exit to/fm the trml aprn.

HELIPAD H1: H60X60 (CONC)

HELIPAD H2: H60X60 (CONC)

HELIPAD H3: H50X50 (CONC)

SAN MARCOS RGNL (HYI)(KHYI) 31 S UTC-6(-5DT) N29°53.57' W97°51.78'

SAN ANTONIO

595 B NOTAM FILE HYI

H-7C, L-19C, 21A

RWY 08-26: H6330X100 (ASPH) S-80 MIRL

IAP, AD

RWY 08: Hangar.

RWY 26: Crops.

RWY 13-31: H5601X100 (ASPH) S-60 MIRL 0.4% up NW

RWY 13: MALS. PAPI(P2L)—GA 3.0° TCH 57'.

RWY 31: PAPI(P2L)—GA 3.0° TCH 60'.

RWY 17-35: H5214X100 (ASPH) S-20 MIRL 0.4% up N

RWY 17: PAPI(P2L)—GA 3.0° TCH 55'.

SERVICE: S4 FUEL 100LL, JET A+ OX4 LGT MALS Rwy 13; MIRL Rwys 08-26, 13-31 and 17-35 preset low intst; to ACTVT and incr intst—CTAF.

AIRPORT REMARKS: Attended 1300-0300Z†. For aft hrs svc 800-229-2379. Call-in fee. Birds and wildlife on and invof arpt. 100LL self svc; 100LL and Jet A+ avbl full serve. Aprn all ireg sfc. Tsnt acft prkg avbl on FBO ramp only. All otr ramp areas resd for based acft or rqr prior cdn with arpt mgmt.

AIRPORT MANAGER: 512-216-6039

WEATHER DATA SOURCES: AWOS-3PT (512) 353-8005

COMMUNICATIONS: CTAF 126.825 ATIS 120.825 (512-353-8005)

Ⓡ AUSTIN APP/DEP CON 119.0

TOWER 126.825 (1300-0300Z†)

GND CON/CLNC DEL 120.125 CLNC DEL 121.35 (When twr clsd)

CLEARANCE DELIVERY PHONE: For CD ctc Austin Apch at 512-369-7865.

AIRSPACE: CLASS D svc 1300-0300Z† eff 01 Apr 2021; other times CLASS E.

RADIO AIDS TO NAVIGATION: NOTAM FILE AUS.

CENTEX (VH) (H) VORTACW 112.8 CWK Chan 75 N30°22.71' W97°31.79' 205° 33.9 NM to fld. 593/6E.

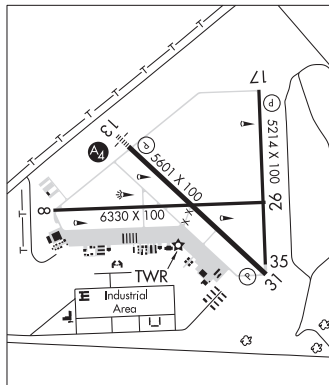
VOR unusable:

180°-190° byd 40 NM

200°-210° byd 40 NM

GARYS NDB (LOMW) 272 RU N29°57.52' W97°56.94' 124° 6.0 NM to fld. 819/7E. NOTAM FILE HYI.

ILS 108.7 I-RUM Rwy 13. Class IT. LOM GARYS NDB. ILS and LOM unmonitored. LOC unusable byd 30° left of course.



AVENGER FLD (See SWEETWATER on page 451)

BAILES (See ANGLETON on page 266)