

CONROE N30°20.55' W95°24.35' NOTAM FILE PIK.
 (L) DME 115.55 PIK Chan 102(Y) at Conroe/North Houston Rgnl. 227.
 DME unusable:
 030°-042° byd 39 NM blo 3,000'
 300°-315° byd 36 NM blo 2,500'
 337°-342° byd 38 NM blo 2,500'

HOUSTON
 L-19D, 21A

CONWAY

EAGLES AERODROME (55T) 2 W UTC-6(-5DT) N35°12.87' W101°24.66'

DALLAS-FT WORTH

3475 NOTAM FILE FTW
RWY 17-35: 5000X80 (TURF) LIRL(NSTD)

RWY 17: Fence.
RWY 35: Fence. Rgt tfc.

SERVICE: LGT Arpt lghts opr dusk-0700Z±. Rwy 17-35 NSTD LIRL; only center 3500 ft lghtd. Lights OTS indefinitely.

AIRPORT REMARKS: Attended continuously. Rwy 17-35 rwy sfc rough. Wind turbines invof arpt. Deep tire ruts acrs rwy, aprxly 660 ft and 1700 ft fm N end.

AIRPORT MANAGER: 806-674-8993

COMMUNICATIONS: CTAF/UNICOM 122.8

CLEARANCE DELIVERY PHONE: For CD ctc Albuquerque ARTCC at 505-856-4861.

CORPUS CHRISTI INTL (CRP)(KCRP) P (CG) 5 W UTC-6(-5DT) N27°46.33' W97°30.15'

BROWNSVILLE
 H-7C, L-20H, 21A, GOAW
 IAP, AD

46 B LRA Class I, ARFF Index B NOTAM FILE CRP MON Airport

RWY 13-31: H7510X150 (ASPH-GRVD) S-150, D-170, 2S-175,
 2D-245 PCR 507 F/D/X/U HIRL

RWY 13: MALSR. PAPI(P4L)—GA 3.0° TCH 50'. RVR-T Pole. Rgt tfc.
RWY 31: MALSR. PAPI(P4L)—GA 3.0° TCH 50'.

RWY 18-36: H6080X150 (ASPH-GRVD) S-150, D-170, 2S-175,
 2D-245 PCR 507 F/D/X/U HIRL

RWY 18: MALSR. PAPI(P4L)—GA 3.0° TCH 50'. Pole.
RWY 36: MALSR. RVR-T Rgt tfc.

RUNWAY DECLARED DISTANCE INFORMATION

RWY 13: TORA-7510 TODA-7510 ASDA-7510 LDA-7510

RWY 18: TORA-6080 TODA-6080 ASDA-6080 LDA-6080

RWY 31: TORA-7510 TODA-7510 ASDA-7510 LDA-7510

RWY 36: TORA-6080 TODA-6080 ASDA-6080 LDA-6080

SERVICE: S4 FUEL 100LL, JET A OX 1, 3 **MILITARY—FUEL** CG will use FBO

AIRPORT REMARKS: Attended continuously. Birds on and invof arpt year round. Unmanned acft may be oprg 3 mi west of arpt drg dalgt hrs at or blw 400' AGL. For svc after hrs call 361-438-1190. Cabaniss Fld located 5 miles southeast of arpt may be mistaken for Corpus Christi Intl arpt. VFR tfc may be operating in the Cabaniss Fld tfc pattern. Cuddyh Fld (clsd arpt) is located 4 miles south of arpt may be mistaken for Corpus Christi Intl arpt. Acft at trml gates adz gnd ctl prior to push. Twr will provide progressive assistance.

MILITARY REMARKS: CG OFFL BUS, min 24 hr PPR. Ctc CORPUS CHRISTI AIR 345.0 15 min prior to entering CG ramp. No tran qrts or govt transportation avbl. If destn CG, incl CGAS CORPUS CHRISTI in rmk sec of fit plan. Sector Command Center: C361-939-0450.

AIRPORT MANAGER: 361-289-0171

WEATHER DATA SOURCES: ASOS (361) 267-5360

COMMUNICATIONS: ATIS 126.8 UNICOM 122.95

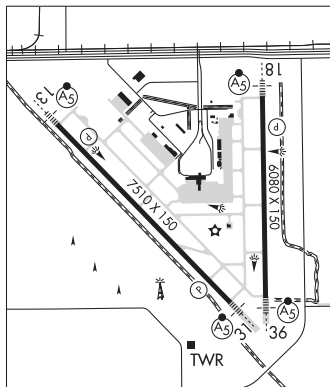
RCO 122.2 (SAN ANGELO RADIO)

Ⓡ **CORPUS APP/DEP CON** 120.9 Rwys 13 & 18 (340°-045°) 120.9 Rwys 31 & 36 (270°-045°) 124.8 Rwys 13 & 18 (150°-339°) 124.8 Rwys 31 & 36 (150°-269°) 125.4 (046°-149°)

TOWER 119.4 **GND CON** 121.9 **CLNC DEL** 118.55

CG CORPUS CHRISTI AIR 345.0 157.175(M83A)X

AIRSPACE: CLASS C svc ctc APP CON.



CONTINUED ON NEXT PAGE

CONTINUED FROM PRECEDING PAGE

RADIO AIDS TO NAVIGATION: NOTAM FILE CRP.

(VH) (H) VORTACW 115.5 CRP Chan 102 N27°54.23' W97°26.69' 192° 8.4 NM to fld. 60/9E.

TACAN AZIMUTH & DME unusable:

024°-036° byd 35 NM blo 1,700'

037°-023° byd 35 NM blo 2,000'

265°-275°

VOR unusable:

340°-005° byd 40 NM blo 7,000'

340°-005° byd 84 NM

Byd 30 NM blo 1,500'

TACAN AZIMUTH unusable:

080°-085° byd 30 NM

ILS/DME 110.3 I-CRP Chan 40 Rwy 13. Class IE. DME also serves Rwy 31. Autopilot cpd apch NA blw 260'.

LOC/DME 110.3 I-EKI Chan 40 Rwy 31. DME also serves Rwy 13.

ILS/DME 109.5 I-OYC Chan 32 Rwy 36. Class IB. LOC unusable inside 1.6 DME.

CORPUS CHRISTI NAS (TRUAX FLD) (NGP)(KNGP) NAS, A 6 SE UTC-6(-5DT)

BROWNSVILLE

N27°41.56' W97°17.42'

H-7C, L-20H, 21A, GOAW
DIAP, AD

18 B TPA—See Remarks NOTAM FILE NGP Not insp.

RWY 13R-31L: H8001X200 (PEM) PCN 52 R/C/W/T HIRL

RWY 13R: SALSF. PAPI(P4L)—GA 3.0° TCH 47'. Rgt tfc.

RWY 31L: REIL. PAPI(P4L)—GA 3.0° TCH 45'.

RWY 13L-31R: H5002X220 (ASPH) PCN 48 F/B/W/T HIRL

RWY 13L: REIL. PAPI(P4L)—GA 3.0° TCH 46'.

RWY 31R: REIL. PAPI(P4L)—GA 3.0° TCH 45'. Rgt tfc.

RWY 18-36: H5002X196 (ASPH) PCN 70 F/B/W/T HIRL

RWY 18: REIL. PAPI(P4L)—GA 3.0° TCH 45'. Rgt tfc.

RWY 36: REIL. PAPI(P4L)—GA 3.0° TCH 50'.

RWY 04-22: H5001X200 (ASPH) PCN 44 F/B/W/T HIRL

RWY 04: REIL. PAPI(P4R)—GA 3.0° TCH 50'.

RWY 22: REIL. PAPI(P4R)—GA 3.0° TCH 52'. Rgt tfc.

SERVICE: 0X 1, 2, 3, 4 **LGT** Dusk-Dawn. When twr clsd ACTVT PCL—CTAF. **MILITARY—JASU** 3(MSU-200, A/U4A74-5),

MEPP-2(NC-8), 3(NC-10), 2(AM32A-108) **FUEL** F-24 **FLUID-LO** avbl only with 7 days prior notification of requirement.

OIL MIL-PRF-23699 (NATO: 0-156) AND **MIL-PRF-7808 L GRADE 3** (NATO: 148) **TRAN ALERT** Tran acct exp delays fm

1500-2000Z± due ltd refu/svc. Maint extremely ltd before 1500Z±, after 2000Z± and during non-work hrs.

MILITARY REMARKS: Opr Mon-Thu 1300-0500Z±, Fri 1300-0100Z±, CLOSED Sat, Sun and hol, other times check NOTAM.

AFM hr 1230-0500Z± Mon-Thu; 1230-0100Z± Fri; clsd Sat, Sun and hol. No lavatory svcs avbl here. Main prkg apron

fm Twy A to Twy C ltd to TW4 acct only. **RSTD** Refueling/tran alert arrangements strongly recommended for all acct to avoid

extv svcg/turnaround delays or parking in high FOD risk areas. PPR 48 hr all tran acct, DSN 861-2506/2507,

C361-961-2506/2507. For civ air ldg pmt info ctc AFM C361-961-2506/5511. Acft arr/dep prohibited one hr prior to

afld opening due to afld preparations exc for Cust/Border Protection. Mission critical or other event rqr ctc AFM

C361-961-2506/2507/5511. USCG helopad located on seawall at 27 42 13N/ 97 16 42.5W clsd. Twy S, south of

Ocean Drive, ltd to acct with a wingspan of 60' or less. **CAUTION** High mid-air potential, extreme vigilance rqr. Exercise

extreme caution vcnty Waldron Fld NALF lctd 3 NM south. Bird act/BASH—See AP-1. See AP-1. Extv R/W test flgts

conducted Mon-Sat fm town of Port O' Connor to Mustang Beach Arpt (KRAS), alg the coast fm 300-5000'. Nmsr birds

vcnty afld, use extreme ctn durg hvy rain events. If equipped, all acct shall utilize UHF ATC freq unless assigned VHF.

TFC PAT TPA—All tfc use ldg or taxi lgt while in arpt tfc area. Tran acct exp apch to full stop ldg only when single rwy ops

are being conducted, practice apch not authorized. **CSTMS/AG/IMG** CSTMS, IMG avbl for acct arriving from overseas, plan arr

from btn 1400-2100Z±, C361-961-2506/2507. Pilots rqr to provide Identia Plate number to Inspector for billing.

MISC Clsd twr ops: departing IFR acct shall obtain an IFR clnc and release from San Angelo FSS prior to tkof when the field

is IFR via ground link or Corpus Christi apch by calling 361-299-4230. If the field is VFR, a VFR departure is authorized.

Rwy 13R-31L clsd Sun 1400-1800Z±. Twy Y open fm inbtx of Rwy 04-22 to apch end Rwy 13R. Acft operating to the

sea wall use caution. Inbd heli ctc Corpus Christi Army Depot (CCAD) flt ops X-ray Charlie at 49.70, 139.0, 339.7, or

DSN 861-0520/1020, C361-961-0520/1020. **A** Avoid flt over populated areas blo 1000' AGL prior to Gulf shore line.

Rotary wing acct destined for Corpus Christi Army Depot turn in will remain at least 1/4 NM off shore and 500' prior to

ctc Navy Corpus Twr. PPR all CCAD tran acct. Turn in will only be accepted dur nml duty hr, Mon-Fri 1300-2300Z±. All

R/W and F/W acct ldg/taxiing to seawall PPR DSN 861-2506/2507, C361-961-2506/2507. R/W acct make apch to

heliapd adj Hgr 44, ctc Ops/X-ray Charlie and gnd taxi to/fron parking. POC Avn Div, Hngr 44. Avoid overfl of bldg south

of ramp area and ammo dump east of containment area. All acct with weapons arr CCAD after nml duty hr notify CCAD

Security DSN 861-3313/3314, C361-961-3313/3314. Major maint avbl. Loading/unloading of air cargo mil/civ

designated for CCAD will be scheduled for daylight hr only. Dur times of natl emerg exceptions apvd by Director, Supply

Corpus Christi Army Depot DSN 861-2557, C361-961-2557.

AIRPORT MANAGER: 361-961-3395

CONTINUED ON NEXT PAGE