

MCKINNEY NTL (TKI)(KTKI) 32 N UTC-6(-5DT) N33°10.62' W96°35.33'

589 B NOTAM FILE TKI

RWY 18-36: H7002X150 (CONC) S-75, D-150, 2D-450 HIRL

RWY 18: MALSR. PAPI(P4L)—GA 3.0° TCH 50'.

RWY 36: MALSR. PAPI(P4L)—GA 3.0° TCH 50'. Rgt tfc.

SERVICE: S4 **FUEL** 100LL, JET A1+ **OX 3** **LGT** When ATCT clsd
ACTVT MALSR Rwy 18; PAPI Rwy 18 and Rwy 36; PAPI Rwy 18 and
36; HIRL Rwy 18-36—CTAF.

NOISE: Noise sensitive areas S of arpt. Pilots are reqd to use NBAA std
noise procs. Rwy 18 dep VFR acct req dep turn hdg 135 degs with
ATC apvl.

AIRPORT REMARKS: Attended 1200-0400Z. Bird activity invof arpt. Rwy
18-36 actual rwy length does not match published value. 500 ft
extension on south end mkd as dsplcd thld. Arpt admin
972-562-4053. No TGLs btwn 1200-1300Z and 0300-0400Z.

NOTE: See Special Notices—Arrival Alert.

AIRPORT MANAGER: 972-547-3401

WEATHER DATA SOURCES: ASOS (972) 548-8525 ASOS broadcast over ATIS
119.925 mhz

COMMUNICATIONS: CTAF 118.825 **UNICOM** 122.95 **ATIS** 119.925

Ⓡ **LONE STAR APP/DEP CON** 124.3

TOWER 118.825 (1200-0400Z) **GND CON** 121.875 **CLNC DEL** 121.35
(when twr clsd)

AIRSPACE: CLASS D svc 1200-0400Z; other times CLASS G.

RADIO AIDS TO NAVIGATION: NOTAM FILE FTW.

COWBOY (VH) (DH) VORW/DME 116.2 CVE Chan 109 N32°53.42' W96°54.24' 037° 23.4 NM to fld. 443/6E.

VOR unusable:

055°-057° byd 57 NM blo 7,500'

131°-137° byd 38 NM

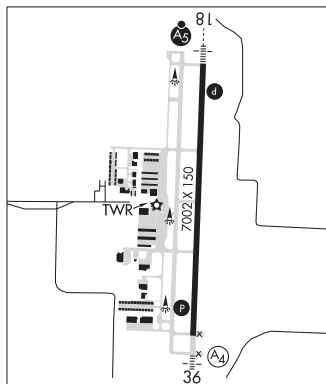
ILS/DME 109.35 I-EFE Chan 30(Y) Rwy 18. Unmonitored when ATCT clsd.

DALLAS-FT WORTH

COPTER

H-6H, L-17C, A

IAP, AD



DALLAS SOUTH PORT (See PALMER on page 414)