

GREENVILLE

MAJORS (GVT)(KGVT) P (AF) 4 SE UTC-6(-5DT) N33°04.07' W96°03.92'

535 B NOTAM FILE GVT

Rwy 17-35: H8030X150 (ASPH) S-26 MIRL

Rwy 17: MALS. PAPI(P4L)—GA 3.0° TCH 74'. Antenna. 0.4% up.

Rwy 35: REIL. PAPI(P4L)—GA 3.0° TCH 66'. Fence. 0.3% up.

SERVICE: S2 **FUEL** 100LL, JET A **LGT** ACTVT MALS Rwy 17; REIL Rwy 35; MIRL Rwy 17-35—CTAF.

MILITARY—JASU 1(B-10) 1(B-10A) 1(MD-3) 1(MA-1) 1(MA-3) **FUEL** (NC-100LL, A)

AIRPORT REMARKS: Attended Sun-Thu 1330-2300Z†, Fri-Sat 1330-0000Z†. Parachute Jumping. When ATCT clsd and there is an emerg or incident on arpt, ctc 903-457-5333. 100LL self svc avbl 24 hours. PPR for PAJA onto Majors Field. 89 ft high intsty radio freq ant 3700 ft east of Rwy 35 at end of Twy K. Twy E lgts located 47 ft from pavement edge. Act not vsb fm opposite end of rwy. Nmrs mil act on fld for modification.

AIRPORT MANAGER: 903-457-3168

WEATHER DATA SOURCES: AWOS-3 133.425 (903) 455-7703.

COMMUNICATIONS: CTAF 118.65 UNICOM 122.95

® **FORT WORTH CENTER APP/DEP CON** 132.025 317.75

TOWER 118.65 385.425 (1330-2200Z† Mon-Fri, irregular other hrs)

GND CON 121.7 335.8 AFMCLO FLT 349.6

CLEARANCE DELIVERY PHONE: When ATCT clsd, for CD ctc Fort Worth ARTCC at 817-858-7584.

AIRSPACE: CLASS D svc 1330-2200Z† Mon-Fri; other times CLASS G.

RADIO AIDS TO NAVIGATION: NOTAM FILE FTW.

BONHAM (VH) (H) VORTACW 114.6 BYP Chan 93 N33°32.25' W96°14.05' 157° 29.4 NM to fld. 700/6E.

ARVILLA (T) TACAN Chan 33 MJF (109.6) N33°03.98' W96°03.68' at fld. 543/5E. NOTAM FILE GVT.

DME unusable:

024°-034° byd 16 NM blo 3,000'

080°-095° byd 5 NM

TACAN AZIMUTH unusable:

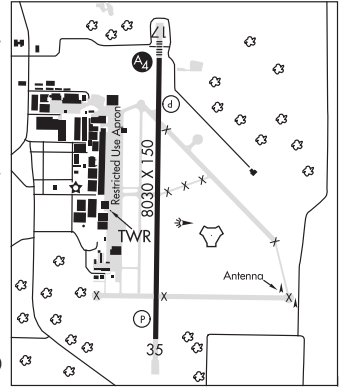
024°-034° byd 16 NM blo 3,000'

080°-095° byd 5 NM

212°-222° byd 12 NM blo 3,500'

SULPHUR SPRINGS (L) DME 109.0 SLR Chan 27 N33°11.92' W95°32.57' 254° 27.5 NM to fld. 476. NOTAM FILE SLR.

ILS/DME 110.5 I-GVT Chan 42 Rwy 17. Class IT. Glideslope unusable for cpd apch blw 900 MSL.



DALLAS-FORT WORTH

H-6H, L-17D

IAP, DIAP, AD

GREGORY M SIMMONS MEML (See CISCO on page 292)

GROESBECK N31°34.89' W96°32.95' NOTAM FILE FTW.

(L) **DME** 108.8 GNL Chan 25 026° 4.0 NM to Mexia-Limestone Co. 514.

DME unusable:

150°-205° byd 30 NM blo 2,500'

230°-310° byd 30 NM blo 2,400'

345°-035° byd 35 NM blo 2,500'

HOUSTON

L-19D, A