

LUFKIN

ANGELINA CO (LFK)(KLFK) 7 SW UTC-6(-5DT) N31°14.04' W94°45.00'

296 B NOTAM FILE LFK MON Airport

RWY 07-25: H5400X100 (ASPH) S-60, D-90 MIRL

RWY 07: MALSR. Tree.

RWY 25: PAPI(P4L)—GA 3.0° TCH 45'. Trees.

RWY 16-34: H4311X100 (ASPH) S-30 MIRL 0.4% up NW

RWY 16: VASI(V4L)—GA 3.0° TCH 48'. Tree.

RWY 34: VASI(V4L)—GA 3.0° TCH 55'. Thld dsplcd 107'. Trees.

SERVICE: S4 **FUEL** 100LL, **JET A+** **LGT** Dusk-dawn. MIRL Rwy 07-25 & Rwy 16-34 preset med intst; to incr intst and ACTVT MALSR Rwy 07—CTAF.

AIRPORT REMARKS: Attended Mon-Fri 1300-0100Z†, Sat-Sun 1500-0100Z†. 100LL svc fee chrgd for fuel aft 0100Z†; call 936-635-1542. Rwy 16-34 296 ft paved stopway NW end. Rwy 34: 100 ft x 199 ft paved safety area. NOTE: See Special Notice-Houston ARTCC.

AIRPORT MANAGER: 936-634-7511

WEATHER DATA SOURCES: ASOS 120.625 (936) 308-0974.

COMMUNICATIONS: CTAF/UNICOM 123.0

LUFKIN RCO 122.2 (MONTGOMERY COUNTY RADIO)

® **HOUSTON CENTER APP/DEP CON** 125.175

CLEARANCE DELIVERY PHONE: For CD if una to ctc on FSS freq, ctc Houston ARTCC at 281-230-5622.

AIRSPACE: CLASS E.

RADIO AIDS TO NAVIGATION: NOTAM FILE LFK.

LUFKIN (VH) (H) VORTACW 112.1 LFK Chan 58 N31°09.75' W94°43.01' 333° 4.6 NM to fld. 207/5E.

TACAN AZIMUTH unusable:

260°-275° byd 30 NM

275°-260° byd 30 NM blo 2,500'

DME unusable:

260°-275° byd 30 NM

275°-260° byd 30 NM blo 2,500'

VOR unusable:

305°-312° byd 40 NM

313°-323° byd 40 NM blo 2,300'

313°-323° byd 66 NM

324°-330° byd 40 NM

FLUFY NDB (LOMW) 350 LF N31°13.13' W94°49.51' 075° 4.0 NM to fld. 205/2E. NDB unmonitored.

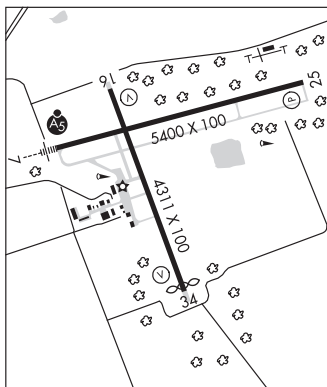
ILS 111.3 I-LFK Rwy 07. Class IB. LOM FLUFY NDB. Unmonitored.

COMM/NAV/WEATHER REMARKS: UNICOM mnt fm 1300-0100Z†.

HOUSTON

H-6I, L-19E, 21A

IAP



LUFKIN N31°09.75' W94°43.01' NOTAM FILE LFK.

(VH) (H) VORTACW 112.1 LFK Chan 58 333° 4.6 NM to Angelina Co. 207/5E.

TACAN AZIMUTH unusable:

260°-275° byd 30 NM

275°-260° byd 30 NM blo 2,500'

DME unusable:

260°-275° byd 30 NM

275°-260° byd 30 NM blo 2,500'

VOR unusable:

305°-312° byd 40 NM

313°-323° byd 40 NM blo 2,300'

313°-323° byd 66 NM

324°-330° byd 40 NM

RCO 122.2 (MONTGOMERY COUNTY RADIO)

HOUSTON

H-6I, L-19E, 21A