

SAN ANGELO RGNL/MATHIS FLD (SJT)(KSJT) 7 SW UTC-6(-5DT) N31°21.46' W100°29.78'**SAN ANTONIO**

1919 B Class I, ARFF Index B NOTAM FILE SJT

H-6G, L-19B**RWY 18-36:** H8054X150 (ASPH-GRVD) S-70, D-100, 2S-127

PCR 490 F/C/X/T MIRL

RWY 18: REIL. PAPI(P4L)—GA 3.0° TCH 45'. Thld dsplcd 902'.

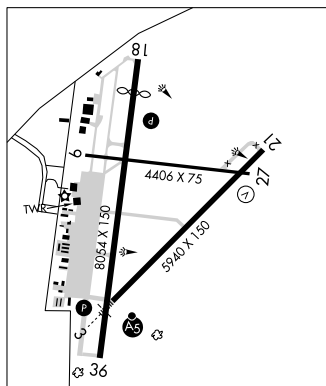
Road.

RWY 36: PAPI(P4L)—GA 3.0° TCH 48'.**RWY 03-21:** H5940X150 (ASPH-GRVD) S-70, D-100, 2S-127

PCR 450 F/B/X/T HIRL 0.4% up SW

RWY 03: MALSR. RVR-T**RWY 21:** VASI(V4L)—GA 3.0° TCH 52'. RVR-R**RWY 09-27:** H4406X75 (ASPH) S-70, D-100, 2S-127

PCR 170 F/C/X/T MIRL

RWY 09: Road.**RWY 27:** Road.**RUNWAY DECLARED DISTANCE INFORMATION****RWY 03:** TORA-5940 TODA-5940 ASDA-5940 LDA-5940**RWY 09:** TORA-4406 TODA-4406 ASDA-4406 LDA-4406**RWY 18:** TORA-8054 TODA-8054 ASDA-8054 LDA-7152**RWY 21:** TORA-5940 TODA-5940 ASDA-5940 LDA-5940**RWY 27:** TORA-4406 TODA-4406 ASDA-4406 LDA-4406**RWY 36:** TORA-7152 TODA-7152 ASDA-7152 LDA-7152**SERVICE:** S4 FUEL 100LL, JET A OX 1, 2, 4 LGT Dusk-dawn. When ATCT clsd MIRL Rwy 18-36 preset low intst. To incr intst and ACTVT MALSR Rwy 03; REIL Rwy 18; PAPI Rwy 18 and 36; HIRL Rwy 03-21; MIRL Rwy 09-27—CTAF.**AIRPORT REMARKS:** Attended 1200-0400Z†. Fee for fuel after hrs call 325-656-1836/1837. PPR 12 hrs for unsked ACR opns with over 30 psgr seats call AMGR 325-659-6409. Ldg fee.**AIRPORT MANAGER:** 325-659-6409**WEATHER DATA SOURCES:** ASOS 128.45 (325) 255-3637.**COMMUNICATIONS:** CTAF 118.3 ATIS 128.45 UNICOM 122.95

RCO 122.2 (SAN ANGELO RADIO)

Ⓡ APP/DEP CON 125.35 (1200-0300Z†)

Ⓡ FORT WORTH CENTER APP/DEP CON 126.15 (0300-1200Z†)

TOWER 118.3 (1300-0300Z†) GND CON 121.9

CLEARANCE DELIVERY PHONE: For CD if una to ctc on FSS freq, ctc Fort Worth ARTCC at 817-858-7584.**AIRSPACE:** CLASS D svc 1300-0300Z†; other times CLASS E.**RADIO AIDS TO NAVIGATION:** NOTAM FILE SJT.**(VH) (H) VORTACW** 115.1 SJT Chan 98 N31°22.50' W100°27.29' 234° 2.4 NM to fld. 1886/10E.

VOR unusable:

111°-190° byd 40 NM

120°-178° byd 24 NM blo 4,500'

191°-201° byd 49 NM

202°-218° byd 40 NM

219°-245° byd 40 NM blo 12,000'

246°-267° byd 40 NM

268°-289° byd 7 NM

290°-314° byd 46 NM

315°-352° byd 40 NM

TACAN AZIMUTH unusable:

120°-178° byd 18 NM

WOOLE NDB (LOMW) 356 SJ N31°16.78' W100°34.57' 036° 6.2 NM to fld. 2127/5E.**ILS/DME** 109.7 I-SJT Chan 34 Rwy 03. Class IE. LOM WOOLE NDB. ILS/DME unmonitored when ATCT clsd.

Glideslope unusable for coupled apch blw 2,685' MSL.