

HOT SPRINGS

MEML FLD (HOT)(KHOT) 3 SW UTC-6(-5DT) N34°28.68' W93°05.77'

540 B Class II, ARFF Index A NOTAM FILE HOT

RWY 05-23: H6595X150 (ASPH-GRVD) S-75, D-125, 2S-158,
2D-210, 2D/2D2-400 PCR 370 F/B/X/U HIRL 0.6% up NE

RWY 05: MALSR. Rgt tfc.

RWY 23: PAPI(P4L)—GA 3.0° TCH 40'. Pole.

RWY 13-31: H4098X100 (ASPH) S-28, D-36, 2D-63

PCR 28 F/B/Y/U MIRL 0.4% up NW

RWY 13: REIL. Trees. Rgt tfc.

RWY 31: Pole.

RUNWAY DECLARED DISTANCE INFORMATION

RWY 05: TORA-6595 TODA-6595 ASDA-6595 LDA-6595

RWY 13: TORA-3210 TODA-4098 ASDA-4098 LDA-4098

RWY 23: TORA-6595 TODA-6595 ASDA-6235 LDA-6235

RWY 31: TORA-4098 TODA-4098 ASDA-4098 LDA-3210

SERVICE: S4 FUEL 100LL, JET A LGT ACTVT HIRL Rwy 05-23, MIRL

Rwy 13-31, MALSR Rwy 05, PAPI Rwy 23, REIL Rwy 13—CTAF.

Rwy 23 PAPI unusbl byd 6° right of cntrl.

AIRPORT REMARKS: Attended 1100-0400Z. Fuel: 100LL: for fuel aft hrs
call 501-617-0324.

AIRPORT MANAGER: 501-321-6750

WEATHER DATA SOURCES: ASOS 119.925 (501) 624-7633.

COMMUNICATIONS: CTAF/UNICOM 123.0

RCO 122.1R 110.0T (JONESBORO RADIO)

Ⓜ **MEMPHIS CENTER APP/DEP CON** 128.475

CLEARANCE DELIVERY PHONE: For CD ctc Memphis ARTCC at 901-368-8453.

AIRSPACE: CLASS E svc 1200-0400Z; other times CLASS G.

RADIO AIDS TO NAVIGATION: NOTAM FILE HOT.

HOT SPRINGS (L) (L) VOR/DME 110.0 HOT Chan 37 N34°28.72' W93°05.44' at fld. 529/4E.

VOR unusable:

005°-014° byd 10 NM

015°-064° byd 15 NM blo 5,000'

065°-090° byd 8 NM

091°-099° byd 15 NM blo 4,800'

100°-135° byd 13 NM blo 11,000'

100°-135° byd 8 NM blo 3,000'

136°-174° byd 26 NM blo 8,000'

136°-174° byd 9 NM blo 3,500'

175°-196° byd 9 NM blo 8,000'

197°-235° byd 9 NM blo 3,500'

236°-250° byd 22 NM blo 5,000'

251°-320° byd 30 NM blo 4,000'

321°-339° byd 10 NM blo 5,500'

321°-339° byd 16 NM blo 10,500'

321°-339° byd 35 NM blo 14,500'

340°-348° byd 30 NM blo 10,500'

349°-004° byd 30 NM blo 4,500'

DME unusable:

015°-064° byd 15 NM blo 5,000'

065°-090° byd 8 NM

091°-099° byd 15 NM blo 4,800'

100°-135° byd 13 NM blo 11,000'

100°-135° byd 8 NM blo 3,000'

136°-174° byd 26 NM blo 8,000'

136°-174° byd 9 NM blo 3,500'

175°-196° byd 9 NM blo 8,000'

184°-215° byd 15 NM blo 7,500'

197°-235° byd 9 NM blo 3,500'

236°-250° byd 22 NM blo 5,000'

251°-320° byd 30 NM blo 4,000'

321°-014° byd 10 NM

HOSSY NDB (LOMW) 385 HO N34°25.35' W93°11.38' 053° 5.7 NM to fld. 471/1E.

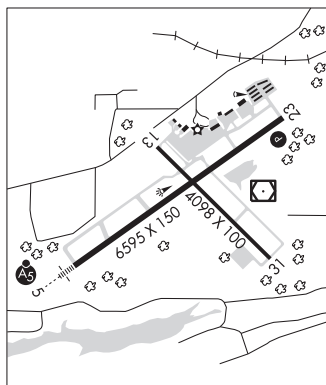
mntrd by HOT & LIT ATCT

ILS/DME 111.5 I-HOT Chan 52 Rwy 05. Class IA. LOM HOSSY NDB. ILS and LOM unmonitored.

MEMPHIS

H-6I, L-17E

IAP



HOWARD CO (See NASHVILLE on page 73)