

**BATON ROUGE METRO, RYAN FLD** (BTR)(KBTR) 4 N UTC-6(-5DT) N30°31.98' W91°08.99'

**HOUSTON**

70 B LRA ARFF Index—See Remarks NOTAM FILE BTR MON Airport

**H-7D, L-21B, 22F**

**RWY 04L-22R:** H7500X150 (CONC-GRVD) S-120, D-170, 2S-175,  
2D-300 PCR 700 R/A/W/T HIRL CL

**IAP, AD**

**RWY 04L:** RVR-TR Pole.

**RWY 22R:** MALSR. TDZL. PAPI(P4L)—GA 3.0° TCH 56'. RVR-TR Rgt tfc.

**RWY 13-31:** H7005X150 (ASPH-GRVD) S-120, D-170, 2S-175,  
2D-300 PCR 990 F/D/W/T HIRL

**RWY 13:** MALSR. RVR-T Thld dsplcd 597'. Pole.

**RWY 31:** MALS. VASI(V4L)—GA 3.0° TCH 64'. RVR-R Thld dsplcd 314'. Road.

**RWY 04R-22L:** H3799X75 (ASPH) S-30, D-45 PCN 26 F/C/X/T  
MIRL No Part 121/Part 380 Ops

**RWY 04R:** Rgt tfc.

**RUNWAY DECLARED DISTANCE INFORMATION**

**RWY 04L:**TORA-7500 TODA-7500 ASDA-7500 LDA-7500

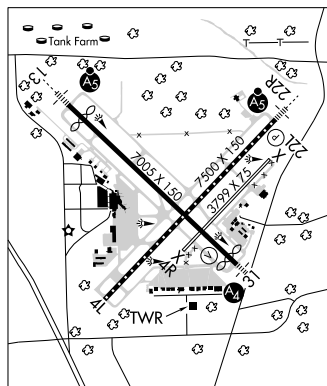
**RWY 04R:**TORA-3799 TODA-3799 ASDA-3799 LDA-3799

**RWY 13:** TORA-7004 TODA-7004 ASDA-6317 LDA-5720

**RWY 22L:**TORA-3799 TODA-3799 ASDA-3799 LDA-3799

**RWY 22R:**TORA-7500 TODA-7500 ASDA-7500 LDA-7500

**RWY 31:** TORA-7004 TODA-7004 ASDA-6407 LDA-6094



**SERVICE:** S4 FUEL 100LL, JET A OX 1, 3 LGT ACTVT MALSR Rwy 22R & 13 and MALS Rwy 31—CTAF. When ATCT clsd HIRL Rwys 13-31 & 04L-22R preset low intst; to incr intst ACTVT—CTAF. MIRL Rwy 04R-22L not avbl.

**AIRPORT REMARKS:** Attended 1100-0600Z†. Migratory birds on and in vicinity of arpt during months of Mar, Apr, Sep and Oct. Class I ARFF Index C, 24 hrs PPR for unscheduled air carrier ops with more than 30 passenger seats 0600-1100Z†, call arpt manager 225-355-2068/0333. When twr clsd use 121.9 to ctc ARFF for emergency request. Rwy 04R-22L and Twy E are similar in appearance. Use caution when exiting Rwy 13-31. Ramp and twy lane adjacent to the commercial air carrier terminal building is limited to commercial air carrier and passenger airtaxi acft only. Twy E weight restrictions: single 44,000 lbs, dual 55,000 lbs, dual tandem 93,000 lbs. Twy E, Twy F btn Rwy 04R-22L and AER 31 not avbl for skedd ACR ops. Twy F btn Rwy 04-22L and 31 rdcs to 40 ft wid. Dsgnd free pub use prkg for GA acft in the back row of the S ramp.

**AIRPORT MANAGER:** 225-355-0333

**WEATHER DATA SOURCES:** ASOS (225) 370-8455 LLWAS.

**COMMUNICATIONS:** CTAF 118.45 ATIS 125.2 225-354-2170 UNICOM 122.95

RCO 122.2 (DE RIDDER RADIO)

Ⓡ APP/DEP CON 120.3 WEST 133.225 EAST (1100-0600Z†)

Ⓡ HOUSTON CENTER APP/DEP CON 126.35 (0600-1100Z†)

TOWER 118.45 (1100-0600Z†) GND CON 121.9 CLNC DEL 119.4

**CLEARANCE DELIVERY PHONE:** For CD if una to ctc on FSS freq, ctc Houston ARTCC at 281-230-5622.

**AIRSPACE:** CLASS C svc ctc APP CON svc (per TWR/NOTAM 1100-0600Z†); other times CLASS E.

**RADIO AIDS TO NAVIGATION:** NOTAM FILE BTR.

**FIGHTING TIGER (VL) (L) VORTACW** 116.5 LSU Chan 112 N30°29.11' W91°17.64' 063° 8.0 NM to fld. 20/6E.

**RUNDI NDB (LOMW)** 284 BT N30°34.98' W91°12.66' 133° 4.4 NM to fld. 69/0E.

**ILS/DME** 110.3 I-BTR Chan 40 Rwy 13. Class ID. LOM RUNDI NDB. Unmonitored when ATCT closed.

**ILS/DME** 108.7 I-CLZ Chan 24 Rwy 22R. Class IIE. Unmonitored when ATCT closed.

**ASR** (1100-0600Z†)

**BEAUREGARD RGNL** (See DE RIDDER on page 104)

**BELCHER** N32°46.28' W93°48.60' NOTAM FILE SHV.

**MEMPHIS**

(H) (H) VORTACW 117.4 EIC Chan 121 159° 14.2 NM to Shreveport Downtown. 190/7E.

**H-6I, L-17E**

**BLOCK WR29** WBF N26°55.80' W90°31.20' /20E

AWOS-3 118.525 (985) 773-5497 Wind unrel.

**L-21B, GOAC**

**BLUEBIRD HILL** (See KEITHVILLE on page 115)