

PALMETTO**MANATEE** (48X) 7 NE UTC-5(-4DT) N27°38.56' W82°31.20'

MIAMI

27 NOTAM FILE PIE

RWY 07-25: 3120X100 (TURF) LIRL**RWY 07:** Trees. Rgt t/c.**SERVICE:** S2 FUEL 100LL LGT LIRL Rwy 07-25 avbl by phone request 941-722-9296.**AIRPORT REMARKS:** Attended Mon-Fri 1400-2200Z, Sat 1400-1700Z. Birds, wildlife and deer on and invof arpt. Fuel avbl daily SR-SS. Call AMGR for after hrs svc and check rwy conditions 941-722-9296. Arpt clsd to turbine hops inclg hover and practice maneuvers at NE field adj to Rwy 07-25 exc Bell Jet Rangers, emerg. Call in advn 941-722-9296. Rwy 07-25 first 500 ft east end soft after heavy seasonal rains. Rwy 07-25 thlds mkd by 3 green lgts and 1 bucket on each side of rwy. Rwy 07 and 25 edges marked by pails on each side of rwy.**AIRPORT MANAGER:** 941-722-9296**COMMUNICATIONS:** CTAF 122.9**CLEARANCE DELIVERY PHONE:** For CD ctc Tampa Apch at 813-878-2528**PANACEA****WAKULLA CO** (2J0) 3 S UTC-5(-4DT) N29°59.37' W84°23.72'

JACKSONVILLE

11 NOTAM FILE GNV

RWY 18-36: 2590X70 (TURF)**RWY 18:** Thld dspcd 200'. Road.**RWY 36:** Thld dspcd 375'. Trees.**SERVICE:** LGT Lgts OTS.**AIRPORT REMARKS:** Unattended. Ground access by prior req 850-321-0373. Parachute Jumping. 50' trees west side of rwy 100' from cntrln. Trees 100'-125' west of Rwy 18-36. AER 36 has 10'-25' trees and 5' fence. Trees, bldgs, windsock poles, lightning detection system, berms and utility poles 75'-125' east of Rwy 18-36. Rwy 18-36 len and wid and dspcd thlds mkd with W PVC pipes. Rwy 18-36 soft turf. 24 hr advn notice or imt reporting upon ldg for acft equipped with weather modification or geoen지니어링 equip ctc arpt ops 850-321-0373.**AIRPORT MANAGER:** 850-321-0373**COMMUNICATIONS:** CTAF 122.9**CLEARANCE DELIVERY PHONE:** For CD ctc Tallahassee Apch at 850-942-8311, when Apch clsd ctc Jacksonville ARTCC at 904-845-1592.**PANAMA CITY****NORTHWEST FLORIDA BEACHES INTL** (ECP)(KECP) 16 NW UTC-6(-5DT) N30°21.49'

NEW ORLEANS

W85°47.74'

H-8G, L-21C, 22I

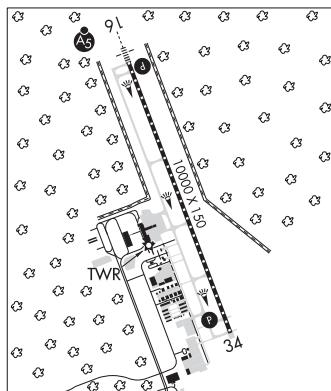
69 B Class I, ARFF Index C NOTAM FILE ECP

IAP, AD

RWY 16-34: H10000X150 (CONC-GRVD) S-100, D-155, 2D-400, 2D/2D2-750 PCR 690 R/B/W/T HIRL CL**RWY 16:** MALSR. TDZL. PAPI(P4L)—GA 3.0° TCH 72'. RVR-TR Trees.**RWY 34:** REIL. PAPI(P4L)—GA 3.0° TCH 86'. RVR-TR Trees.**SERVICE:** FUEL 100LL, JET A LGT When ATCT clsd, ACTVT MALSR Rwy 16; REIL Rwy 34; TDZ Rwy 16; cntln Rwy 16-34; PAPI Rwy 16 and 34; HIRL Rwy 16-34—CTAF.**AIRPORT REMARKS:** Attended continuously. Birds on and invof arpt. Twy J btn Twy D and Taxilane F clsd to acft with wingspan grtr than 80 ft exc 1 hr PPR—850-769-6033. Twy K, M, E2, E3 btn Twy D and Taxilane F rstrd to acft with wingspan grtr than 80 ft. Mil VIP arr/dep shall be at arpt term with prior apvl fm arpt auth—850-763-6751 ext 306.**AIRPORT MANAGER:** 850-763-6751**WEATHER DATA SOURCES:** ASOS 119.975 (850) 235-7857. LAWRS.**COMMUNICATIONS:** CTAF 118.95 ATIS 119.975

Ⓡ TYNDALL APP/DEP CON 125.2 (Abv 5000') (1200-0400Z Mon-Fri, 1500-2300Z Sat-Sun, clsd Thanksgiving/Christmas Day.)

Ⓡ JACKSONVILLE CENTER APP/DEP CON 120.825

TOWER 118.95 (1200-0400Z) **GND CON** 121.65 **CLNC DEL** 123.75

CONTINUED ON NEXT PAGE

CONTINUED FROM PRECEDING PAGE

AIRSPACE: CLASS D svc 1200-0400Z±; other times CLASS G.

RADIO AIDS TO NAVIGATION: NOTAM FILE MAI.

MARIANNA (VL) (L) VORTACW 114.0 MAI Chan 87 N30°47.17' W85°07.47' 234° 43.2 NM to fld. 128/OE.

TACAN AZIMUTH unusable:

261°-276° byd 25 NM blo 3,000'

346°-061° byd 30 NM blo 2,000'

DME unusable:

261°-276° byd 25 NM blo 3,000'

346°-061° byd 30 NM blo 2,000'

VOR unusable:

050°-055° byd 61 NM

065°-068° byd 40 NM

075°-079° byd 42 NM

080°-100° byd 40 NM

110°-115° byd 40 NM

209°-347° byd 40 NM

261°-276° byd 25 NM blo 3,000'

316°-326° byd 20 NM blo 12,500'

346°-061° byd 30 NM blo 2,000'

ILS/DME 111.15 I-PUK Chan 48(Y) Rwy 16. Class IIE.

PATRICK SPACE FORCE BASE (COF)(KCOF) AF 3 S UTC-5(-4DT) N28°14.10' W80°36.60'

JACKSONVILLE

8 B TPA—See Remarks NOTAM FILE PIE Not insp.

H-8I, L-24F

RWY 03-21: H9008X200 (ASPH-CONC-GRVD) PCN 45 R/C/W/T HIRL

DIAP, AD

RWY 03: ALSF1. PAPI(P4L)—GA 3.0° TCH 52'.

RWY 21: PAPI(P4L)—GA 3.0° TCH 52'.

RWY 11-29: H3993X200 (ASPH) PCN 51 F/B/W/T MIRL

RWY 11: PAPI(P4L)—GA 3.0° TCH 51'.

RWY 29: PAPI(P4L)—GA 3.0° TCH 50'. Thld dsplcd 301'.

SERVICE: FUEL JET A++ OX 1, 2 **MILITARY—LGT** Twy A edge lgt btn Twy B and L aprx 17'-78' fm usbl twy scf. Comd

Post does not have ability to ACVT afld lgt aft afld hr. Rwy 21 non-std thr lgt. Airfield lgts-out ops may be in prog on non-intfc basis with non-ptcpg acft. Rwy 03 PAPI unusbl byd 7 deg left and 9 deg right of cntrln. **FUEL** A+ +, B+, A+. Opr Mon-Fri 1130-0330Z±, On call (1 hr response) Sat-Sun and hol. Ltd fuel cpblty avbl for tran acft due to const of fuels storage area—C321-494-5535/DSN 854-5535/1365. **FLUID** SP PRESAIR LHOX LOX **OIL** O-128-133-148

TRAN ALERT Ops 1300-0500Z± Mon-Fri; clsd hol. All tran arr or dep rqr Tran Alert Asst; no arr after 0430Z±. Req for svcs outside nml hr must be forwarded thru afld mgmt NLT 10 work days in adv. Chip detection inspection rqr by F-16 not avbl. Hvy acft must provide their own tow bar. Fleet svc unavbl; lav cart avbl upon req for aircrew use.

NOISE: Noise abatement info—airfield ops DSN 854-2222/C321-494-2222.

CONTINUED ON NEXT PAGE