

ST AUGUSTINE (SGJ)(KSGJ) 4 N UTC-5(-4DT) N29°57.56' W81°20.38'

JACKSONVILLE
H-8H, L-21D, 24G
IAP, AD

10 B ARFF Index—See Remarks NOTAM FILE SGJ
RWY 13-31: H8001X150 (ASPH-GRVD) S-100, D-280, 2D-560,
 2D/2D2-1120 PCR 790 F/A/X/T HIRL CL
RWY 13: VASI(V4L)—GA 3.0° TCH 44'. Thld dspld 1056'. Road.
RWY 31: MALSR, PAPI(P4L)—GA 3.0° TCH 54'. Thld dspld 806'.
RWY 06-24: H2701X60 (ASPH) S-46.5, D-85 PCR 30 F/A/X/T
 MIRL No Part 121/Part 380 Ops
RWY 06: PAPI(P2L)—GA 3.25° TCH 47'. Trees.
RWY 02-20: H2609X75 (ASPH) S-100, D-203.5 PCR 30 F/A/X/T
 MIRL No Part 121/Part 380 Ops
RWY 02: Trees.

RUNWAY DECLARED DISTANCE INFORMATION

RWY 02: TORA-2610 TODA-2610 ASDA-2610 LDA-2610
RWY 06: TORA-2701 TODA-2701 ASDA-2701 LDA-2701
RWY 13: TORA-8001 TODA-8001 ASDA-7202 LDA-6144
RWY 20: TORA-2610 TODA-2610 ASDA-2610 LDA-2610
RWY 24: TORA-2701 TODA-2701 ASDA-2701 LDA-2701
RWY 31: TORA-8001 TODA-8001 ASDA-6730 LDA-5925

SERVICE: S4 FUEL 100LL, JET A OX3, 4 LGT ACTVT MALSR Rwy
 31; HIRL Rwy 13-31; MIRL Rwy 06-24 & 02-20—CTAF. PAPI Rwy
 06 & 31 and VASI Rwy 13 opr consly.

AIRPORT REMARKS: Attended 1100-0300Z±. FICON not mntd 0200-1200Z±. Aerobic act E side of Rwy 13-31 ctc twr for
 ttc and GNV Radio for times. Jet single point refueling avbl. Self svc fuel avbl 24 hrs with credit card. Class IV, ARFF Index
 A. PPR 24 hrs for unsked ACR ops with more than 30 pax seats call amgr 904-209-0090. User fee arpt: Intl LRA. User
 fee ctc U.S. CUSTOMS on arpt 904-209-0099.

AIRPORT MANAGER: 904-209-0090

WEATHER DATA SOURCES: AWOS-3PT 119.625 (904) 824-7084.

COMMUNICATIONS: CTAF 127.625 ATIS 119.625 UNICOM 122.95

RCO 122.3 (GAINESVILLE RADIO)

Ⓡ **JACKSONVILLE APP/DEP CON** 120.75

TOWER 127.625 (1200-0200Z±) **GND CON** 121.175

CLEARANCE DELIVERY PHONE: For CD if una to ctc on FSS freq, ctc Jacksonville Apch at 904-741-0284.

AIRSPACE: CLASS D svc 1200-0200Z±; other times CLASS G.

RADIO AIDS TO NAVIGATION: NOTAM FILE SGJ.

(T) (T) **VOR/DME** 109.4 SGJ Chan 31 N29°57.40' W81°19.81' at fld. 6/6W.

ILS/DME 111.1 I-GUH Chan 48 Rwy 31. Class IT. Glideslope unusable byd 5° either side of LOC ctrln.

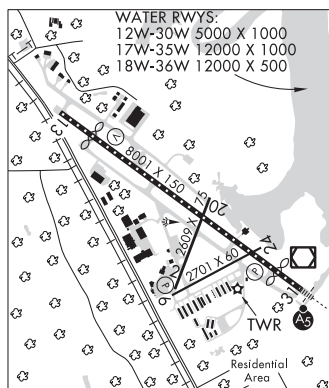
Unmonitored when ATCT clsd.

WATERWAY 17W-35W: 12000X1000 (WATER)

WATERWAY 18W-36W: 12000X500 (WATER)

WATERWAY 12W-30W: 5000X1000 (WATER)

SEAPLANE REMARKS: Waterway 12-30, 17-35, 18-36 CLOSED to air carrier ops.

**ST CLOUD SPB** (3FL) 1 N UTC-5(-4DT) N28°16.46' W81°17.10'

JACKSONVILLE

54 NOTAM FILE PIE

WATERWAY 09W-27W: 3000X200 (WATER)

AIRPORT REMARKS: Unattended. Call arpt mgr for prkg rqns.

AIRPORT MANAGER: 407-957-7353

COMMUNICATIONS: CTAF 122.9

ST GEORGE ISLAND (See APALACHICOLA on page 85)**ST PETE-CLEARWATER INTL** (See ST PETERSBURG-CLEARWATER on page 170)