

## TAMPA

**PETER O KNIGHT** (TPF)(KTPF) 3 S UTC-5(-4DT) N27°54.93' W82°26.96'

7 B TPA-907(900) NOTAM FILE TPF

**RWY 04-22:** H2687X75 (ASPH) S-75, D-108 PCN 26 F/A/X/T MIRL

**RWY 04:** PAPI(P4L)—GA 3.5° TCH 45'. Thld dspclcd 179'. Fence. Rgt ttc.

**RWY 22:** REIL. Thld dspclcd 180'. Boat.

**RWY 18-36:** H2687X75 (ASPH) S-27, D-42 PCN 8 F/B/X/T MIRL

**RWY 18:** Thld dspclcd 203'. Fence.

**RWY 36:** PAPI(P2R)—GA 3.0° TCH 55'. Thld dspclcd 201'. Fence. Rgt ttc.

**RUNWAY DECLARED DISTANCE INFORMATION**

**RWY 04:** TORA-3403 TODA-3403 ASDA-3403 LDA-3224

**RWY 18:** TORA-2687 TODA-2687 ASDA-2574 LDA-2371

**RWY 22:** TORA-3404 TODA-3404 ASDA-3404 LDA-3403

**RWY 36:** TORA-2487 TODA-2487 ASDA-2512 LDA-2311

**SERVICE:** S4 FUEL 100LL, JET A OX 1, 2, 4 LGT ACTVT REIL Rwy 22; PAPI Rwy 04, 36; MIRL Rwy 04-22 and 18-36—CTAF.

**AIRPORT REMARKS:** Attended 1200-0000Z±. Gulls on and invof arpt. Be alert: MacDill AFB lctd 0.6 miles SW. GA traffic departing TPF should be advised military Class D airspace 0.6 miles off the departure end of Runway 22. GA traffic must exercise extreme caution for opposing military traffic in the pattern for Runway 05-23 at MacDill AFB. Rwy 18 and 22 ship channel apch end. Ocean vessel ship channel east. Twy E clsd to acct with wing spans in excess of 40'. 24 hr advn notice or imt reporting upon ldg for acct equipped with weather modification or geoenineering equip. 813-870-8770 ext. 3.

**AIRPORT MANAGER:** 813-870-8735

**WEATHER DATA SOURCES:** AWOS-3 118.925 (813) 251-6824.

**COMMUNICATIONS:** CTAF/UNICOM 122.725

Ⓡ TAMPA APP/DEP CON 119.9

CLNC DEL 119.8

**CLEARANCE DELIVERY PHONE:** For CD ctc Tampa Apch at 813-878-2528

**RADIO AIDS TO NAVIGATION:** NOTAM FILE PIE.

**ST PETERSBURG (H) (H) VORTACW** 116.4 PIE Chan 111 N27°54.47' W82°41.06' 093° 12.5 NM to fld. 5/5W.

VOR unusable:

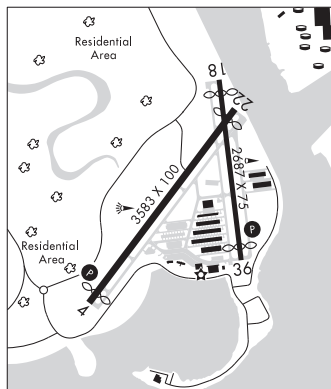
025°-054° byd 21 NM blo 5,000'

133°-143° byd 20 NM blo 4,000'

233°-250° byd 20 NM

TACAN AZIMUTH unusable:

133°-143° blo 4,000'



MIAMI  
L-21D, 24F  
IAP