

DONALSONVILLE MUNI (17J) 1 S UTC-5(-4DT) N31°00.39' W84°52.66'

147 B NOTAM FILE MCN

RWY 01-19: H5512X100 (ASPH) S-20 MIRL 0.3% up N

RWY 01: PAPI(P2L)—GA 3.0° TCH 26'. Trees.

RWY 19: PAPI(P2L)—GA 3.0° TCH 46'. Trees.

SERVICE: FUEL 100LL LGT ACTVT MIRL Rwy 01-19—CTAF. PAPI Rwy 01 and 19 opr consly dusk-0400Z†, after 0400Z†—CTAF.

AIRPORT REMARKS: Attended 1300-2200Z†. Fuel 24 hr credit card svc avbl.

AIRPORT MANAGER: 229-524-2118

WEATHER DATA SOURCES: AWOS-3PT 119.675 (229) 524-0001.

COMMUNICATIONS: CTAF 122.9

Ⓡ **CAIRNS APP/DEP CON** 125.4 (1200-0500Z† Sun-Mon, 24 hrs Tue-Sat), other times ctc

Ⓡ **JACKSONVILLE CENTER APP/DEP CON** 134.3

CLEARANCE DELIVERY PHONE: For CD ctc Cairns Apch at 334-255-8402, when Apch clsd ctc Jacksonville ARTCC at 904-845-1592.

RADIO AIDS TO NAVIGATION: NOTAM FILE MAI.

MARIANNA (VL) (L) VORTACW 114.0 MAI Chan 87 N30°47.17'

W85°07.47' 044° 18.3 NM to fld. 128/0E.

TACAN AZIMUTH unusable:

261°-276° byd 25 NM blo 3,000'

346°-061° byd 30 NM blo 2,000'

DME unusable:

261°-276° byd 25 NM blo 3,000'

346°-061° byd 30 NM blo 2,000'

VOR unusable:

050°-055° byd 61 NM

065°-068° byd 40 NM

075°-079° byd 42 NM

080°-100° byd 40 NM

110°-115° byd 40 NM

209°-347° byd 40 NM

261°-276° byd 25 NM blo 3,000'

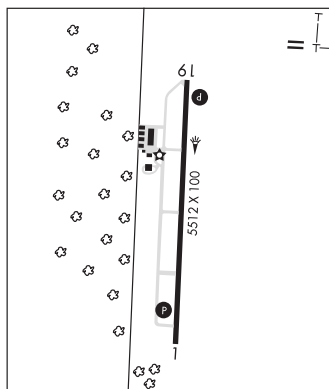
316°-326° byd 20 NM blo 12,500'

346°-061° byd 30 NM blo 2,000'

JACKSONVILLE

H-9A, 12F, L-21D, 22I

IAP



DOUGLAS MUNI (DQH)(KDQH) 2 S UTC-5(-4DT) N31°28.60' W82°51.63'

257 B NOTAM FILE MCN

RWY 04-22: H6000X100 (ASPH) S-26 PCN 27 F/C/X/T MIRL

RWY 04: MALSR. PAPI(P2L)—GA 3.0° TCH 52'. Trees.

RWY 22: PAPI(P2L)—GA 2.5° TCH 27'. Pole.

SERVICE: S2 FUEL 100LL, JET A+ LGT ACTVT MALSR Rwy 04; PAPI Rwy 04 and Rwy 22; MIRL Rwy 04-22—CTAF.

AIRPORT REMARKS: Attended Mon-Fri 1300-2200Z†. Wildlife act in vcy of apt.

AIRPORT MANAGER: 912-384-1409

WEATHER DATA SOURCES: AWOS-3 119.075 (912) 383-7258.

COMMUNICATIONS: CTAF/UNICOM 122.8

Ⓡ **JACKSONVILLE CENTER APP/DEP CON** 127.575

CLEARANCE DELIVERY PHONE: For CD ctc Jacksonville ARTCC at 904-845-1592.

RADIO AIDS TO NAVIGATION: NOTAM FILE AMG.

ALMA (H) TACAN Chan 98 AMG (115.1) N31°32.19'

W82°30.49' 259° 18.4 NM to fld. 194/0E. tac unmonitored 0300-1100Z†.

TACAN AZ unusable:

Blw 3,000'

TACAN DME unusable:

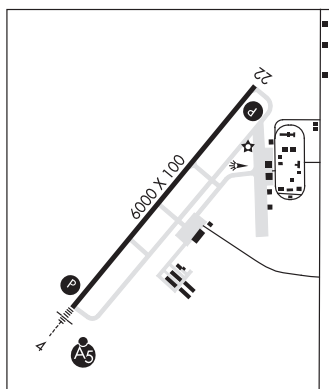
Blw 3,000'

ILS 108.7 I-DQH Rwy 04. Class IA.

JACKSONVILLE

H-9B, 12F, L-24H

IAP



DR C P SAVAGE SR (See MONTEZUMA on page 240)