

DUBLIN

W H 'BUD' BARRON (DBN)(KDBN) 3 NW UTC-5(-4DT) N32°33.88' W82°59.10'

ATLANTA
H-9B, 12F, L-18J
IAP

- 311 B NOTAM FILE MCN
- RWY 02-20:** H6501X150 (ASPH) S-30, D-53 HIRL 0.3% up N
- RWY 02:** MALSR. PAPI(P2L)—GA 3.0° TCH 35'. Trees.
- RWY 20:** PAPI(P2L)—GA 3.0° TCH 29'. Thld dspcd 489'. Road.
- RWY 14-32:** H5171X100 (ASPH) S-28, D-44 0.3% up NW
- RWY 14:** Trees.
- RWY 32:** Trees.

RUNWAY DECLARED DISTANCE INFORMATION

- RWY 02:** TORA-6300 TODA-6300 ASDA-6300 LDA-6300
- RWY 14:** TORA-5171 TODA-5171 ASDA-5171 LDA-5171
- RWY 20:** TORA-6500 TODA-6500 ASDA-6000 LDA-6000
- RWY 32:** TORA-5171 TODA-5171 ASDA-5171 LDA-5171

SERVICE: S4 **FUEL** 100LL, JET A+ **LGT** ACTVT MALSR Rwy 02; PAPI Rwy 02 and 20—CTAF. HIRL Rwy 02-20 oper cont dusk-0300Z†, after 0300Z† ACTVT—CTAF.

AIRPORT REMARKS: Attended Mon-Fri 1300-2200Z†. Arpt phone: 478-275-0029. Self svc fuel avbl 24 hrs with credit card.

AIRPORT MANAGER: 478-272-4755

WEATHER DATA SOURCES: AWOS-3 118.425 (478) 277-9051.

COMMUNICATIONS: CTAF/UNICOM 122.7

RCO 122.1R 122.6 113.1T (MACON RADIO)

Ⓡ **ATLANTA APP/DEP CON** 124.2 (1115-0400Z†) ctc Atlanta Apch at 678-364-6131.

ATLANTA CENTER APP/DEP CON 123.95 (0400-1115Z†) ctc Atlanta ARTCC at 770-210-7692.

CLEARANCE DELIVERY PHONE: For CD if una to ctc on FSS freq, ctc Atlanta Apch at 678-364-6132, when ATCT clsd ctc Atlanta ARTCC at 770-210-7692.

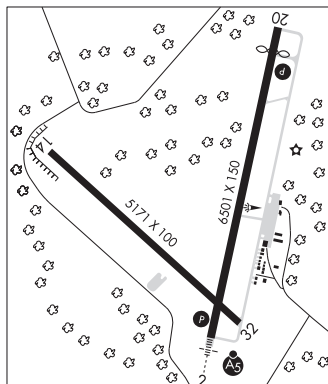
RADIO AIDS TO NAVIGATION: NOTAM FILE MCN.

DUBLIN (VL) (L) VORTAC 113.1 DBN Chan 78 N32°33.81' W82°49.80' 276° 7.9 NM to fld. 306/5W.

VOR unusable:

- 013°-038° byd 40 NM
- 040°-080°
- 102°-113° byd 40 NM
- 117°-129° byd 40 NM
- 153°-163° byd 40 NM blo 3,000'
- 153°-163° byd 80 NM
- 175°-189° byd 40 NM
- 274°-280° byd 40 NM
- 281°-291°
- 292°-308° byd 40 NM
- 309°-319° byd 40 NM blo 3,000'
- 309°-319° byd 80 NM
- 320°-332° byd 40 NM
- 343°-000° byd 40 NM blo 3,000'
- 343°-000° byd 52 NM

ILS/DME 109.1 I-DBN Chan 28 Rwy 02. Class IA.



DUBLIN N32°33.81' W82°49.80' NOTAM FILE MCN.

ATLANTA

(VL) (L) VORTAC 113.1 DBN Chan 78 276° 7.9 NM to W H 'Bud' Barron. 306/5W.

H-9B, 12F, L-18J, 24H

VOR unusable:

- 013°-038° byd 40 NM
- 040°-080°
- 102°-113° byd 40 NM
- 117°-129° byd 40 NM
- 153°-163° byd 40 NM blo 3,000'
- 153°-163° byd 80 NM
- 175°-189° byd 40 NM
- 274°-280° byd 40 NM
- 281°-291°
- 292°-308° byd 40 NM
- 309°-319° byd 40 NM blo 3,000'
- 309°-319° byd 80 NM
- 320°-332° byd 40 NM
- 343°-000° byd 40 NM blo 3,000'
- 343°-000° byd 52 NM

RCO 122.1R 122.6 113.1T (MACON RADIO)

EARLY CO (See BLAKELY on page 208)