

**BOWLING GREEN—WARREN CO RGNL** (BWG)(KBWG) 2 SE UTC-6(-5DT) N36°57.87' W86°25.18'

ST LOUIS  
H-5E, 9A, L-16J  
IAP

547 B Class IV, ARFF Index A NOTAM FILE BWG

**RWY 03-21:** H6501X150 (ASPH) S-120, D-221, 2D-358

PCR 560 F/C/X/T HIRL 0.4% up SW

**RWY 03:** REIL. PAPI(P4L)—GA 3.0° TCH 43'.

**RWY 21:** REIL. PAPI(P4L)—GA 3.0° TCH 54'.

**RWY 12-30:** H3956X150 (ASPH) S-25.5, D-40 PCN 9 F/C/X/T

MIRL No Part 121/Part 380 Ops

**RWY 30:** Thld dsplcd 349'.

**RUNWAY DECLARED DISTANCE INFORMATION**

**RWY 03:** TORA-6500 TODA-6500 ASDA-6500 LDA-6500

**RWY 21:** TORA-6500 TODA-6500 ASDA-6500 LDA-6500

**SERVICE:** S4 FUEL 100LL, JET A LGT ACTVT REIL Rwy 03, 21; PAPI

Rwy 03, 21; HIRL Rwy 03-21—CTAF.

**AIRPORT REMARKS:** Attended continuously. Birds on and invof arpt. Ops with more than 30 pax seats 24 hr PPR—Amgr. Rwy 12-30 longl and transverse cracking, uneven sfc.

**AIRPORT MANAGER:** 270-842-1101

**WEATHER DATA SOURCES:** ASOS 127.825 (270) 843-8136.

**COMMUNICATIONS:** CTAF/UNICOM 123.0

RCO 122.2 (LOUISVILLE RADIO)

® **MEMPHIS CENTER APP/DEP CON** 133.85

**CLEARANCE DELIVERY PHONE:** For CD ctc Memphis ARTCC at 901-368-8453/8449.

**AIRSPACE:** CLASS E.

**RADIO AIDS TO NAVIGATION:** NOTAM FILE BWG.

**NOORA NDB (LOMW)** 236 BW N36°52.80' W86°28.90' 034° 5.9 NM to fld. 613/4W.

**(DH) DME** 113.35 BWG Chan 80(Y) N36°57.87' W86°25.40' at fld. 528.

DME unusable:

003°-030° byd 30 NM blo 7,000'

068°-072° byd 35 NM blo 5,000'

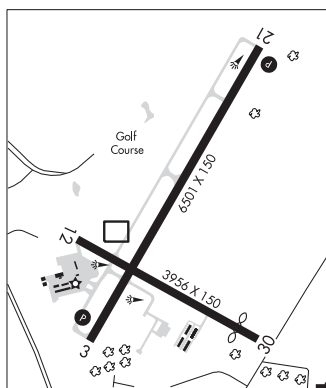
128°-178° byd 35 NM blo 5,000'

220°-309° byd 15 NM blo 5,000'

310°-002° byd 15 NM blo 10,000'

**ILS** 108.75 I-BWG Rwy 03. Class IB. LOM NOORA NDB. Glideslope unusable within 0.6 NM blw 762'; unusable byd 6° left of course and byd 6° right of course.

**COMM/NAV/WEATHER REMARKS:** CNL IFR — Louisville FSS 122.2.



**BOWLING GREEN** N36°57.87' W86°25.40' NOTAM FILE BWG.

**(DH) DME** 113.35 BWG Chan 80(Y) at Bowling Green—Warren Co Rgnl. 528.

DME unusable:

003°-030° byd 30 NM blo 7,000'

068°-072° byd 35 NM blo 5,000'

128°-178° byd 35 NM blo 5,000'

220°-309° byd 15 NM blo 5,000'

310°-002° byd 15 NM blo 10,000'

RCO 122.2 (LOUISVILLE RADIO)

ST LOUIS  
H-5E, 6J, 9A, L-16J

**BOWMAN FLD** (See LOUISVILLE on page 283)

**BRECKINRIDGE CO** (See HARDINSBURG on page 276)