

**BEAUFORT****MICHAEL J SMITH FLD** (MRH)(KMRH) 1 N UTC-5(-4DT) N34°44.03' W76°39.62'

10 B TPA—See Remarks LRA NOTAM FILE MRH

**RWY 08-26:** H5004X100 (ASPH) D-60 MIRL**RWY 08:** REIL. PAPI(P2L)—GA 3.0° TCH 45'. Boat.**RWY 26:** REIL. PAPI(P2R)—GA 3.0° TCH 43'. Thld dspcld 289'. Road. Rgt tfc.**RWY 03-21:** H4192X150 (ASPH) S-12.5 MIRL**RWY 03:** PAPI(P2L)—GA 4.0° TCH 44'. Thld dspcld 864'. Road.**RWY 21:** PAPI(P2L)—GA 4.0° TCH 54'. Thld dspcld 516'. Trees. Rgt tfc.**RWY 14-32:** H4001X100 (ASPH) S-12.5**RWY 32:** Thld dspcld 490'.**SERVICE:** S4 FUEL 100LL, JET A1+ OX3, 4 LGT ACTVT REIL Rwy 08 and 26; PAPI Rwy 03 and 21; MIRL Rwy 03-21 and Rwy 08-26—CTAF. PAPI Rwy 08 and 26 opr continuously.**NOISE:** Noise abatement procedures in effect, ctc amgr 252-728-1928. Mil actv Rwy 08-26 required for noise abatement. Avoid overflights of Beaufort Waterfront and Beaufort National Register Historic District.**AIRPORT REMARKS:** Attended 1300Z†-dusk. For service after hours call 843-465-2846. Rwy 14-32 CLSD. Deer and birds on and invof arpt and bird-dropped shells may cause FOD. Skydiving operations - do not overfly arpt. TPA—single engine 1000 ft AGL, twin engine 1500 ft AGL. No line of sight btwn rwy ends.**AIRPORT MANAGER:** 252-728-1928**WEATHER DATA SOURCES:** ASOS 135.375 (252) 728-2055.**COMMUNICATIONS:** CTAF/UNICOM 122.8Ⓡ **CHERRY POINT APP/DEP CON** 132.575

CLNC DEL 125.65

**CLEARANCE DELIVERY PHONE:** For CD ctc Cherry Point Apch at 252-466-5960.**RADIO AIDS TO NAVIGATION:** NOTAM FILE ISO.**KINSTON (VL) (L) VORTAC** 117.5 ISO Chan 122 N35°22.26' W77°33.50' 136° 58.4 NM to fld. 70/5W.

VOR unusable:

020°-025° byd 40 NM

040°-115° byd 40 NM

145°-155° byd 40 NM

175°-185° byd 40 NM

183°-215° byd 30 NM blo 5,000'

200°-206° byd 40 NM

207°-214° byd 59 NM

215°-238° blo 3,500'

215°-238° byd 6 NM

238°-258° byd 30 NM blo 5,000'

239°-265° byd 40 NM

280°-290° byd 40 NM

295°-308° byd 40 NM

309°-319° byd 31 NM

320°-325° byd 40 NM

335°-340° byd 40 NM

345°-347° byd 40 NM

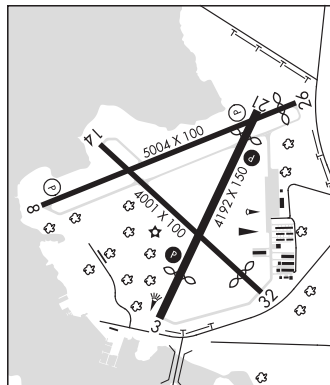
348°-358° byd 20 NM

TACAN AZIMUTH unusable:

183°-215° byd 30 NM blo 5,000'

DME unusable:

183°-215° byd 30 NM blo 5,000'

**COMM/NAV/WEATHER REMARKS:** Due to volume of mil tfc and trng rcmd all actv using MRH ctc Cherry Point App 132.57 AB and 125.65 prior to MRH dep.CHARLOTTE  
H-9C, L-35B  
IAP**BILLY MITCHELL** (See HATTERAS on page 323)