

FAYETTEVILLE

FAYETTEVILLE RGNL/GRANNIS FLD (FAY)(KFAY) 3 S UTC-5(-4DT) N34°59.47'

CHARLOTTE

H-9C, 12H, L-35A, 36F
IAP, AD

W78°52.82'

189 B Class I, ARFF Index B NOTAM FILE FAY

RWY 04-22: H7709X150 (ASPH-GRVD) S-109, D-178, 2S-175,
2D-321 PCR 430 F/A/X/T HIRL 0.3% up SW**RWY 04:** MALSR. PAPI(P4R)—GA 3.13° TCH 47'. RVR-T Thld dsplcd
598'.**RWY 22:** REIL. PAPI(P4L)—GA 3.0° TCH 48'. RVR-R Thld dsplcd
303'.**RWY 10-28:** H4801X150 (ASPH) S-53, D-75 PCN 17 F/A/X/T MIRL**RWY 10:** REIL. Trees.**RWY 28:** REIL. PAPI(P4L)—GA 3.0° TCH 36'. Trees.

RUNWAY DECLARED DISTANCE INFORMATION

RWY 04: TORA-7709 TODA-7709 ASDA-7006 LDA-6408**RWY 22:** TORA-7709 TODA-7709 ASDA-6711 LDA-6408

SERVICE: S4 FUEL 100LL, JET A

AIRPORT REMARKS: Attended 1100-0500Z. CLOSED to all mil acft over
17,000 lbs for air carrier ramp ops exc 24 hr PPR. Call arpt mgr
910-433-1160, Mon-Fri. Major power plant repairs avbl for piston
engines only.**AIRPORT MANAGER:** 910-433-1625**WEATHER DATA SOURCES:** ASOS 121.25 (910) 484-1546. LAWRS. LLWAS.**COMMUNICATIONS:** ATIS 121.25 UNICOM 122.95

Ⓡ APP/DEP CON 125.175 321°-060° 127.8 231°-320° 133.0 61°-230°

TOWER 118.3 GND CON 121.7

AIRSPACE: CLASS C svc ctc APP CON.**RADIO AIDS TO NAVIGATION:** NOTAM FILE FAY.

(L) (L) VOR/DME 114.85 FAY Chan 95(Y) N34°59.13' W78°52.50' at fld. 187/4W.

VOR unusable:

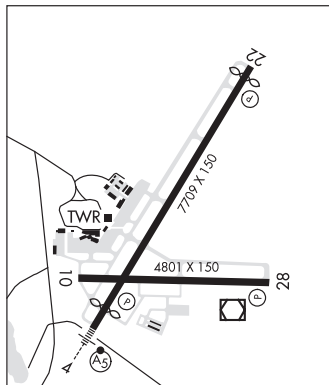
058°-068° blo 4,000'

090°-100°

DME unusable:

090°-100°

ILS/DME 110.5 I-GRA Chan 42 Rwy 04. Class IB. Glideslope unusable byd 3° right of course.



GRAYS CREEK (2GC) 9 S UTC-5(-4DT) N34°53.62' W78°50.61'

CHARLOTTE

L-35A, 36F

160 NOTAM FILE RDU

RWY 17-35: H3500X30 (ASPH) S-8 LIRL(NSTD)**RWY 17:** Trees.**RWY 35:** Thld dsplcd 350'. Tree.

SERVICE: S4 FUEL 100LL LGT For LIRL Rwy 17-35 call

(910)-483-4114. Rwy 17-35 nstd LIRL first 350 ft Rwy 35 not lgtd.

Rwy 35 lgtd thld relctd 350 ft; 3150 ft of Rwy 17-35 usbl at ngt. Rwy

17 nstd end lgts dsplcd 122 ft fm end.

AIRPORT REMARKS: Attended Mon-Fri 1300-2200Z. Wkends by apmntnt
only call 910-286-3435. Wildlife in vcnty of arpt. Caution ac fit trng
day and night—Enter/exit rwy only on south end, stay on rwy sfc when
turning around to back taxi. Taxi on the grass apron at a slow speed due
to uneven sod sfc. Exer ctn with ngt ldg due to nonstandard lgtg offset
from pvmt giving perception rwy wider.**AIRPORT MANAGER:** 910-286-3435**COMMUNICATIONS:** CTAF 122.9**CLEARANCE DELIVERY PHONE:** For CD ctc Washington ARTCC at
703-771-3587.**RADIO AIDS TO NAVIGATION:** NOTAM FILE FAY.

FAYETTEVILLE (L) (L) VOR/DME 114.85 FAY Chan 95(Y)

N34°59.13' W78°52.50' 168° 5.7 NM to fld. 187/4W.

VOR unusable:

058°-068° blo 4,000'

090°-100°

DME unusable:

090°-100°

