

GREENVILLE

PITT-GREENVILLE (PGV)(KPGV) 2 N UTC-5(-4DT) N35°38.14' W77°23.05'

CHARLOTTE

26 B ARFF Index—See Remarks NOTAM FILE PGV

H-9C, 12H, L-35C

RWY 02-20: H7175X150 (ASPH-GRVD) S-85, D-140

IAP, AD

PCR 326 F/B/X/T HIRL

RWY 02: REIL. PAPI(P4L)—GA 3.1° TCH 41'. Thld dspcd 271'. Trees.

RWY 20: MALSR. PAPI(P4L)—GA 3.0° TCH 50'. Trees.

RWY 08-26: H4997X150 (ASPH) S-45, D-73 PCR 153 F/B/X/T MIRL

No Part 121/Part 380 Ops

RWY 08: REIL. PAPI(P4L)—GA 4.0° TCH 53'. Trees.

RWY 26: REIL. PAPI(P4L)—GA 3.0° TCH 40'. Pole.

RUNWAY DECLARED DISTANCE INFORMATION

RWY 02: TORA-7175 TODA-7175 ASDA-7175 LDA-6905

RWY 08: TORA-4997 TODA-4997 ASDA-4997 LDA-4997

RWY 20: TORA-7175 TODA-7175 ASDA-6505 LDA-6505

RWY 26: TORA-4997 TODA-4997 ASDA-4997 LDA-4997

SERVICE: S4 FUEL 100LL, JET A LGT ACTIVATE MALSR Rwy 20; PAPI

Rwy 02, Rwy 20, Rwy 08 and Rwy 26; HIRL Rwy 02-20; MIRL Rwy

08-26—CTAF. Lgt'd windsock OTS indef.

AIRPORT REMARKS: Attended continuously. Class I, ARFF Index B. Arpt clsd

to unscheduled air carrier ops exc 8 hrs PPR 252-902-2025 daily

0700-1500Z±. Index C ARFF eqpt avbl upon req. Rwy 08-26 not

available for air carrier use, uneven surface. Rwy 08-26 markings lack

visibility. Jet acft departing from Rwy 20 shall hold on air carrier or GA apron until take off clearance is received. 24 hr

helicopter ops at hospital 1.5 NM SSW of arpt, monitoring CTAF.

AIRPORT MANAGER: 252-902-2026

WEATHER DATA SOURCES: AWOS-3 128.425 (252) 758-6485.

COMMUNICATIONS: CTAF/UNICOM 122.8

PITT-GREENVILLE RCO 122.2 (RALEIGH RADIO)

Ⓡ WASHINGTON CENTER APP/DEP CON 123.85

CLNC DEL 122.35 (RALEIGH RADIO)

CLEARANCE DELIVERY PHONE: For CD if una to ctc on FSS freq, ctc Washington ARTCC at 703-771-3587.

AIRSPACE: CLASS E svc 1100-0500Z±; other times CLASS G.

RADIO AIDS TO NAVIGATION: NOTAM FILE RDU.

TAR RIVER (VL) (H) VORTAC 117.8 TYI Chan 125 N35°58.60' W77°42.22' 148° 25.7 NM to fld. 73/5W.

VOR unusable:

048°-052° byd 40NM blo 6,000'

186°-189° byd 40 NM blo 6,000'

298°-318° byd 40 NM blo 6,000'

TAC AZ unusable:

008°-018° byd 27 NM

120°-127° byd 33 NM

284°-289°

DME unusable:

008°-018° byd 27 NM

120°-127° byd 33 NM

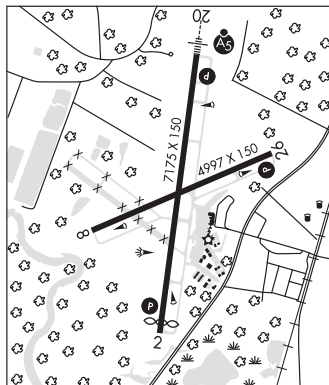
209°-215° byd 30 NM

287°-292° byd 38 NM

339°-347° byd 30 NM

ALWOOD NDB (MHW) 230 AQE N35°42.41' W77°22.31' 197° 4.3 NM to fld. 39/9W. NOTAM FILE PGV.

ILS/DME 110.7 I-PGV Chan 44 Rwy 20. Class IA. LOC unmonitored. DME unmonitored. Glideslope unmonitored.



HALIFAX/NORTHAMPTON RGNL (See ROANOKE RAPIDS on page 354)

HARNETT RGNL JETPORT (See ERWIN on page 315)