

JACKSONVILLE

ALBERT J ELLIS (OAJ)(KOAJ) 10 NW UTC-5(-4DT) N34°49.75' W77°36.73'

CHARLOTTE

H-9C, 12H, L-35B

IAP, AD

93 B ARFF Index—See Remarks NOTAM FILE OAJ

RWY 05-23: H7100X150 (ASPH-GRVD) S-120, D-250, 2S-175,
2D-498 PCR 590 F/A/W/T HIRL

RWY 05: MALSR. PAPI(P4L)—GA 3.0° TCH 55'.

RWY 23: REIL. PAPI(P4L)—GA 3.0° TCH 47'.

SERVICE: S4 FUEL 100LL, JET A LGT ACTVT MALSR Rwy 05; REIL
Rwy 23; PAPI Rwy 05 and 23; HIRL Rwy 05-23—CTAF.

AIRPORT REMARKS: Attended 1000-0500Z†. For fuel other hrs call
910-347-8366. Class I, ARFF Index B. Clsd to unsked ACR opns
with more than 30 psgr seats excp PPR call amgr 910-324-1100 or
910-989-3168. Index B ARFF coverage provided during commercial
air trc ops. Index C available upon req. Clsd to all mil acft over 17,000
lbs for air carrier ramp ops exc 24 hr PPR. Call arpt mgr
910-324-1100 or 910-989-3168. 180° turns on Rwy 05-23 not
authorized for acft 60,000 lbs and over. Field conditions not
monitored 0500-1000Z† daily.

AIRPORT MANAGER: 910-324-1100

WEATHER DATA SOURCES: AWOS-3PT (910) 324-5233 LAWRS.

COMMUNICATIONS: CTAF 132.65 UNICOM 122.95 ATIS 124.475 or call
910-324-5233

Ⓡ **WILMINGTON APP/DEP CON** 135.75 (1100-0400Z†)

Ⓡ **WASHINGTON CENTER APP/DEP CON** 124.025 135.75 (0400-1100Z†)

ELLIS TOWER 132.65 (1200-0300Z†)

GND CON 125.4 CLNC DEL 125.4 CLNC DEL 121.4 (When twr clsd)

CLEARANCE DELIVERY PHONE: For CD when ATCT clsd, ctc Wilmington Apch at 910-815-4676, or when Apch clsd ctc
Washington ARTCC at 703-771-3587.

AIRSPACE: CLASS D svc 1200-0300Z†; other times CLASS E.

RADIO AIDS TO NAVIGATION: NOTAM FILE ILM.

WILMINGTON (H) (H) VORTAC 117.0 ILM Chan 117 N34°21.10' W77°52.46' 031° 31.4 NM to fld. 29/7W.

VOR portion unusable:

051°-185°

164°-051° blo 17,500'

186°-229° blo 3,000'

230°-315° byd 5 NM blo 17,500'

316°-050° blo 8,000'

TACAN DME unusable:

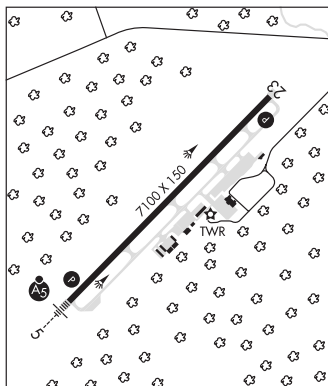
015°-305° byd 30 NM blo 2,500'

TACAN AZIMUTH unusable:

129°-160° byd 30 NM blo 2,500'

ELLAS NDB (LOMW) 261 OA N34°45.03' W77°42.27' 052° 6.6 NM to fld. 76/8W. NOTAM FILE OAJ.

ILS/DME 108.7 I-OAJ Chan 24 Rwy 05. Class IA. LOM ELLAS NDB. LOM ELLAS NDB unmonitored. LOC
unusable byd 15° right of course. Autopilot cpd apch NA blw 900' MSL.



SKY MANOR (N22) 8 W UTC-5(-4DT) N34°42.65' W77°35.10'

CHARLOTTE

60 NOTAM FILE RDU

RWY 08-26: 3610X85 (TURF)

RWY 08: Thld dsplcd 595'. Trees.

RWY 26: Trees.

AIRPORT REMARKS: Unattended. Be alert deer invof arpt. Arpt is being reconstructed; men and eqpt on and invof Rwy 08-26.

Rwy 08-26 has no markings due to ongoing reconstruction. Pvt road parls rwy on S side 20' from rwy edge.

AIRPORT MANAGER: 910-389-3014

COMMUNICATIONS: CTAF 122.9

CLEARANCE DELIVERY PHONE: For CD ctc Washington ARTCC at 703-771-3587.