

**ROCKY MOUNT/WILSON RGNL** (RWI)(KRWI) 7 SW UTC-5(-4DT) N35°51.38' W77°53.52' CHARLOTTE  
 158 B ARFF Index—See Remarks NOTAM FILE RWI H-9C, 12H, L-35B, 36G  
 IAP

**RWY 04-22:** H7099X150 (ASPH-GRVD) S-101, D-162

PCR 600 F/A/W/T HIRL

**RWY 04:** MALSR. PAPI(P4L)—GA 3.0° TCH 41'. Trees.

**RWY 22:** REIL. PAPI(P4L)—GA 3.0° TCH 42'. Trees.

**RUNWAY DECLARED DISTANCE INFORMATION**

**RWY 04:** TORA-7100 TODA-7100 ASDA-7100 LDA-7100

**RWY 22:** TORA-7100 TODA-7100 ASDA-6900 LDA-6900

**SERVICE:** S4 FUEL 100LL, JET A OX1 LGT PAPI Rwy 04 and 22 opr  
 consly. ACTVT MALSR Rwy 04; REIL Rwy 22; HIRL Rwy  
 04-22—CTAF.

**AIRPORT REMARKS:** Attended Mon-Fri 1300-0000Z, Sat-Sun  
 1300-2300Z. Class IV, ARFF Index A. Clsd to ACR opns with more  
 than 30 psgr seats excp 24 hr PPR call amgr 252-446-7057.

**AIRPORT MANAGER:** 252-446-3189

**WEATHER DATA SOURCES:** ASOS 118.875 (252) 446-0732.

**COMMUNICATIONS:** CTAF/UNICOM 123.05

RCO 122.2 (RALEIGH RADIO)

® WASHINGTON CENTER APP/DEP CON 123.85

**CLEARANCE DELIVERY PHONE:** For CD if una to ctc on FSS freq, ctc Washington  
 ARTCC at 703-771-3587.

**AIRSPACE:** CLASS E svc 1300-2300Z; other times CLASS G.

**RADIO AIDS TO NAVIGATION:** NOTAM FILE RDU.

**TAR RIVER (VL) (H) VORTAC** 117.8 TYI Chan 125 N35°58.60' W77°42.22' 237° 11.7 NM to fld. 73/5W.

VOR unusable:

048°-052° byd 40NM blo 6,000'

186°-189° byd 40 NM blo 6,000'

298°-318° byd 40 NM blo 6,000'

TAC AZ unusable:

008°-018° byd 27 NM

120°-127° byd 33 NM

284°-289°

DME unusable:

008°-018° byd 27 NM

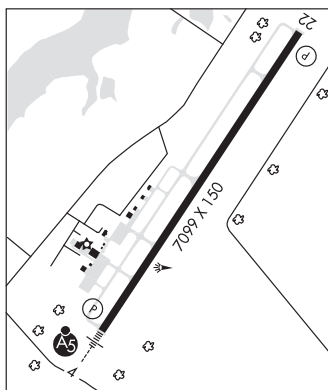
120°-127° byd 33 NM

209°-215° byd 30 NM

287°-292° byd 38 NM

339°-347° byd 30 NM

ILS/DME 108.3 I-RWI Chan 20 Rwy 04. Class IA. ILS mnt lctn aocc.



**ROVDY** N35°43.99' W80°29.37' NOTAM FILE RUQ. CHARLOTTE  
 NDB (LOMW) 275 RU 202° 5.4 NM to Mid-Carolina Rgnl. 700/6W. L-25D, 36F