

**WILMINGTON INTL** (ILM)(KILM) P (AF) 3 NE UTC-5(-4DT) N34°16.27' W77°54.17'  
 32 B LRA Class I, ARFF Index C NOTAM FILE ILM  
**RWY 06-24:** H8016X150 (ASPH-GRVD) S-85, D-185, 2S-175

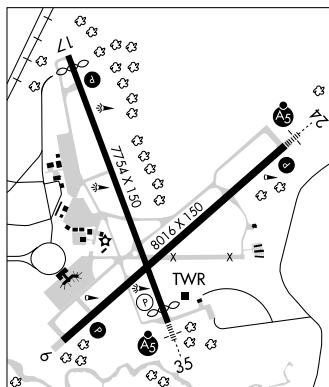
**CHARLOTTE**  
**H-9C, L-35B**  
**IAP, DIAP, AD**

PCR 470 F/B/X/T HIRL  
**RWY 06:** REIL. PAPI(P4R)—GA 3.0° TCH 57'. RVR-TR  
**RWY 24:** MALSR. PAPI(P4L)—GA 3.0° TCH 48'. RVR-TR  
**RWY 17-35:** H7754X150 (ASPH-GRVD) S-85, D-185, 2S-175  
 PCR 480 F/B/X/T HIRL  
**RWY 17:** REIL. PAPI(P4L)—GA 3.0° TCH 50'. RVR-R Thld dspcd 350'.  
**RWY 35:** MALSR. PAPI(P4L)—GA 3.0° TCH 36'. RVR-T Thld dspcd 400'.

**RUNWAY DECLARED DISTANCE INFORMATION**

**RWY 06:** TORA-8016 TODA-8016 ASDA-8016 LDA-8016  
**RWY 17:** TORA-7754 TODA-7754 ASDA-6954 LDA-6604  
**RWY 24:** TORA-8016 TODA-8016 ASDA-8016 LDA-8016  
**RWY 35:** TORA-7754 TODA-7754 ASDA-7604 LDA-7204

**SERVICE:** S4 **FUEL** 100LL, JET A, A+ **OX** 1, 2, 3, 4 **LGT** ACTVT  
 MALSR Rwy 24 and 35; REIL Rwy 06 and 17; PAPI Rwy 06, 17, 24;  
 HIRL Rwy 06-24 and 17-35; and all twy lgts—CTAF. **MILITARY—FUEL**  
 A, A+ (C910-763-4691.) (NC-100LL)



**AIRPORT REMARKS:** Attended continuously. Acft taxiing from south ramp obtain ATC clnc prior to crossing Rwy 17-35 1100-0400Z†. Traffic pattern alt 1000' AGL reciprocating engine, 1500' AGL tbi/jet. OHD: 5 mile initial 2500 ft AGL, break 2000 ft AGL. Tower calls drctn of break. Carrier break NA. Pilots conducting EFVS ops; be aware LED ALS in use Rwy 35. Flight Notification Service (ADCUS) avbl.

**AIRPORT MANAGER:** 910-341-4333

**WEATHER DATA SOURCES:** ASOS (910) 212-6314

**COMMUNICATIONS:** CTAF 119.9 ATIS 124.975 UNICOM 122.95

**RCO** 122.6 (RALEIGH RADIO)

**RCO** 122.1R 117.0T (RALEIGH RADIO)

Ⓡ **APP/DEP CON** 135.75 317.425 (344°-163°) 118.25 284.65 (164°-343°) (1100-0400Z†)

Ⓡ **WASHINGTON CENTER APP/DEP CON** 135.75 317.425 (0400-1100Z†)

**TOWER** 119.9 239.3 (1100-0400Z†) **GND CON** 121.9 348.6 **CLNC DEL** 120.875

**CLEARANCE DELIVERY PHONE:** For CD if una to ctc on FSS freq, ctc Washington ARTCC at 703-771-3587.

**AIRSPACE:** CLASS D svc 1100-0400Z†; other times CLASS E.

**TRSA** svc ctc **APP CON** within 20 NM

**RADIO AIDS TO NAVIGATION:** NOTAM FILE ILM.

(H) (H) **VORTAC** 117.0 ILM Chan 117 N34°21.10' W77°52.46' 203° 5.0 NM to fld. 29/7W.

VOR portion unusable:

051°-185°

164°-051° blo 17,500'

186°-229° blo 3,000'

230°-315° byd 5 NM blo 17,500'

316°-050° blo 8,000'

TACAN DME unusable:

015°-305° byd 30 NM blo 2,500'

TACAN AZIMUTH unusable:

129°-160° byd 30 NM blo 2,500'

**WILZE NDB (LOMW)** 205 GM N34°20.24' W77°48.71' 239° 6.0 NM to fld. 28/10W.

**AIRLI NDB (LOMW)** 281 IL N34°11.48' W77°51.98' 349° 5.1 NM to fld. 12/10W.

**ILS/DME** 109.95 I-GNM Chan 36(Y) Rwy 06. Class IE.

**ILS** 111.55 I-GMX Rwy 24. Class IIE. LOM WILZE NDB.

**ILS** 110.3 I-ILM Rwy 35. Class IT. LOM AIRLI NDB. Autopilot cpd apchs NA blw 238' MSL.