

SUMTER (SMS)(KSMS) 4 N UTC-5(-4DT) N33°59.70' W80°21.68'

CHARLOTTE

182 B NOTAM FILE AND

H-9B, 12G, L-24I

RWY 05-23: H5501X100 (ASPH) S-31.5, D-42.5 PCN 12 F/D/Y/T

IAP

MIRL

RWY 05: REIL. PAPI(P4L)—GA 3.0° TCH 46'. Trees. Rgt tfc.

RWY 23: ODALS. REIL. PAPI(P4L)—GA 3.0° TCH 45'. Trees.

RWY 14-32: 3081X120 (TURF)

RWY 14: Trees.

RWY 32: Tree. Rgt tfc.

SERVICE: S4 FUEL 100LL, JET A LGT After 0100Z†, ACTVT REILS Rwy 05-23; MIRL Rwy 05-23—CTAF. PAPI Rwy 05 and Rwy 23 opr continuously.

AIRPORT REMARKS: Attended 1300-2300Z†. For 100LL aft 2200Z† call 803-469-4639. Wildlife on and invof arprt with incr act dusk and dawn.

AIRPORT MANAGER: 803-469-4639

WEATHER DATA SOURCES: AWOS-3 118.075 (803) 469-6750.

COMMUNICATIONS: CTAF/UNICOM 122.7

Ⓡ SHAW APP/DEP CON 125.4 (1100-0300Z† Mon-Fri, 1300-2100Z† Sat-Sun, clsd fed hol, and ACC Family days)

Ⓡ JACKSONVILLE CENTER APP/DEP CON 124.7 (0300-1100Z†)

CLEARANCE DELIVERY PHONE: For CD ctc Shaw Apch at 803-895-4884, when Apch clsd ctc Jacksonville ARTCC at 904-845-1592.

RADIO AIDS TO NAVIGATION: NOTAM FILE CAE.

COLUMBIA (VH) (H) VORTAC 114.7 CAE Chan 94 N33°51.44' W81°03.23' 078° 35.5 NM to fld. 404/2W.

VOR unusable:

000°-073° byd 35 NM blo 6,000'

200°-234° byd 12 NM blo 3,000'

235°-245° byd 12 NM blo 6,000'

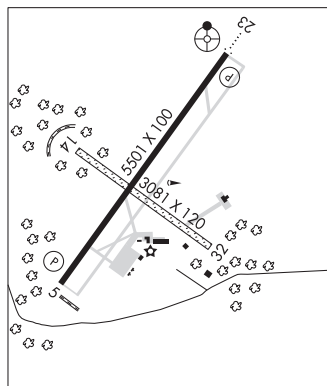
246°-289° byd 12 NM blo 3,000'

290°-305° byd 12 NM blo 2,400'

306°-344° byd 30 NM

345°-359° byd 10 NM blo 5,000'

ILS/DME 109.35 I-SMS Chan 30(Y) Rwy 23. Glideslope unusable byd 6° right of course.

**TIMMONSVILLE****HUGGINS MEML** (58J) 1 NE UTC-5(-4DT) N34°08.13' W79°55.28'

CHARLOTTE

143 B NOTAM FILE AND

RWY 14-32: 3090X150 (TURF) LIRL

RWY 14: Bldg.

RWY 32: Trees.

SERVICE: LGT ACTVT LIRL Rwy 14-32 and rotating bcn—CTAF.

AIRPORT REMARKS: Unattended. Parachute Jumping. Rwy 14-32 standing water after heavy rain.

AIRPORT MANAGER: (843) 229-7515

COMMUNICATIONS: CTAF 122.9

CLEARANCE DELIVERY PHONE: For CD ctc Florence Apch at 843-665-0632, when Apch clsd ctc Jacksonville ARTCC at 904-845-1592.

TRENTON**EDGEFIELD CO** (6J6) 1 SE UTC-5(-4DT) N33°44.21' W81°49.13'

CHARLOTTE

611 NOTAM FILE AND

RWY 11-29: 2640X85 (TURF) 0.6% up W

RWY 11: Tree.

RWY 29: Tree.

RWY 15-33: 1584X56 (TURF) 0.9% up NW

RWY 33: Tree.

AIRPORT REMARKS: Unattended. Radio ctl acft on and invof arprt. Deer on and invof arprt.

AIRPORT MANAGER: 218-686-7746

COMMUNICATIONS: CTAF 122.9

CLEARANCE DELIVERY PHONE: For CD ctc Augusta Apch at 706-771-1777. When Augusta Apch clsd, for CD ctc Columbia Apch at 803-822-4511.

TWIN CITY (See LORIS on page 406)