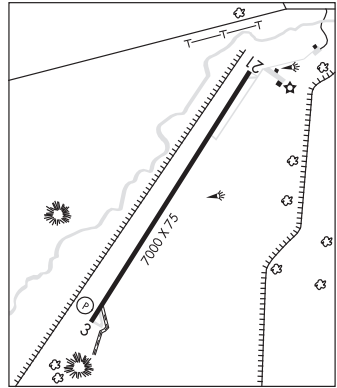


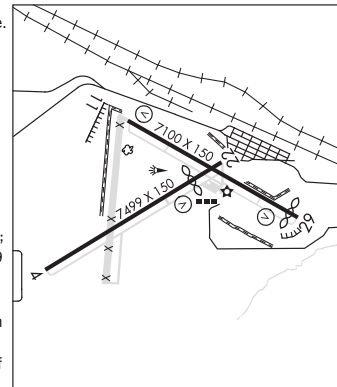
WINDOW ROCK (RQE)(KRQE) 1 S UTC-7 N35°39.12' W109°04.04'
 6742 B NOTAM FILE RQE
RWY 03-21: H7000X75 (ASPH) S-30, D-45, 2D-75 PCN 15 F/D/W/T
 MIRL
RWY 03: REIL. PAPI(P2L)—GA 3.0° TCH 42'. Fence.
RWY 21: REIL. Rgt tfc.
SERVICE: LGT ACTVT REIL Rwy 03 and 21; MIRL Rwy 03-21—CTAF.
AIRPORT REMARKS: Attended Mon-Fri 1500-0000Z. Terrain all quadrants.
 Turbulence infov arpt. Rwy 03-21 south half rough. Rwy 03 turn
 around unusbl. Rwy 03 rwy end markings faded or misg.
AIRPORT MANAGER: 505-371-8323
WEATHER DATA SOURCES: ASOS 118.325 (928) 900-4667.
COMMUNICATIONS: CTAF/UNICOM 122.8
 (R) **ALBUQUERQUE CENTER APP/DEP CON** 124.325
CLEARANCE DELIVERY PHONE: For CD etc Albuquerque ARTCC at
 505-856-4861.
RADIO AIDS TO NAVIGATION: NOTAM FILE GUP.
GALLUP (VH) (H) VORTAC 115.1 GUP Chan 98 N35°28.56'
 W108°52.36' 304° 14.2 NM to fld. 7051/14E.
 VOR unusable:
 298°-306° byd 40 NM

DENVER
 H-4K, L-8H
 IAP



WINSLOW-LINDBERGH RGNL (INW)(KINW) 1 W UTC-7 N35°01.31' W110°43.35'
 4941 B NOTAM FILE INW MON Airport
RWY 04-22: H7499X150 (ASPH) S-50, D-80, 2S-102, 2D-125
 MIRL 0.8% up SW
RWY 22: REIL. VASI(V4L)—GA 3.0° TCH 40'. Thld dspld 1262'. Tree.
RWY 11-29: H7100X150 (ASPH) S-60, D-70, 2S-89, 2D-110 MIRL
 0.4% up NW
RWY 11: REIL. VASI(V4L)—GA 3.0° TCH 36'. Rgt tfc.
RWY 29: VASI(V4L)—GA 3.0° TCH 28'. Thld dspld 344'. Fence.
RUNWAY DECLARED DISTANCE INFORMATION
RWY 04: LDA-7499
RWY 11: LDA-7100
RWY 22: LDA-6236
RWY 29: LDA-6756
SERVICE: FUEL 100LL, JET A LGT ACTIVATE REIL Rwy 11 and Rwy 22;
 MIRL Rwy 04-22 and Rwy 11-29—CTAF. VASI Rwy 11 and Rwy 29
 opr consly.
AIRPORT REMARKS: Attended Mon-Fri 1400-0100Z, Sat-Sun
 1500-0000Z. After hr svc - 928-587-2630. Rwy 11-29 edges both
 sides rough with cracks & vegetation; center ptn has lrg cracks & 4 in
 holes. Rwy 11 markings faded. Rwy 29 markings faded. SW corner of
 Forest Svc ramp clsd. Lndg fee: Coml Indg and ovngt tiedown fee.
AIRPORT MANAGER: 928-289-2422
WEATHER DATA SOURCES: ASOS 118.875 (928) 224-5817.
COMMUNICATIONS: CTAF/UNICOM 122.8
RCO 122.6 (PRESCOTT RADIO)
 (R) **ALBUQUERQUE CENTER APP/DEP CON** 127.675
CLEARANCE DELIVERY PHONE: For CD if una to ctc on FSS freq, etc Albuquerque ARTCC at 505-856-4561.

PHOENIX
 H-4K, L-8G
 IAP



CONTINUED ON NEXT PAGE

CONTINUED FROM PRECEDING PAGE

AIRSPACE: CLASS E svc 1100-0600Z; other times CLASS G.

RADIO AIDS TO NAVIGATION: NOTAM FILE INW.

(VH) (H) VORTACW 112.6 INW Chan 73 N35°03.70' W110°47.70' 110° 4.3 NM to fld. 4913/14E.

VOR unusable:

015°-021° byd 40 NM
 022°-032° byd 40 NM blo 31,000'
 033°-043° byd 40 NM blo 13,000'
 033°-043° byd 96 NM
 044°-050° byd 40 NM
 073°-077° byd 40 NM
 120°-160° byd 40 NM
 161°-171° byd 40 NM blo 16,000'
 161°-171° byd 48 NM
 172°-185° byd 40 NM blo 12,000'
 172°-185° byd 63 NM
 186°-191° byd 40 NM
 192°-202° byd 40 NM blo 10,000'
 192°-202° byd 62 NM
 203°-215° byd 40 NM blo 14,000'
 203°-215° byd 77 NM
 216°-281° byd 40 NM
 282°-292° byd 40 NM blo 18,000'
 302°-307° byd 40 NM
