

MARYSVILLE

YUBA CO (MYV)(KMYV) 3 SE UTC-8(-7DT) N39°05.87' W121°34.19'

64 B NOTAM FILE MYV

RWY 14-32: H6007X150 (ASPH) S-75, D-100, 2S-127, 2D-150

HIRL

RWY 14: MALS. VASI(V4L)—GA 3.0° TCH 50'. Tree.

RWY 32: VASI(V4L)—GA 3.0° TCH 32'. Pole.

RWY 05-23: H3314X60 (ASPH) S-42, D-60, 2D-95

RWY 05: Railroad.

RWY 23: Tree.

SERVICE: S3 FUEL 100LL, JET A LGT ACTIVATE MALS. RWY 14, VASI RWY 14 and RWY 32, HIRL RWY 14-32—CTAF.

AIRPORT REMARKS: Attended 1400-0200Z±. Migratory flocks of waterfowl invof arpt during the spring and fall of the year. RWY 23 +35' p-lines 900'-1050' from rwy end running 145' left to 210' rgt. All acft enter tfc pattern at 1000' AGL except turbine-powered or large airplanes at 1500' AGL. RWY 05-23 asph sfc is in poor cond with raveling and spalling asph, and longl and lateral cracking. RWY 05 and RWY 23 mrkgs are faded.

AIRPORT MANAGER: 530-749-7800

WEATHER DATA SOURCES: ASOS 118.475 (530) 742-0695.

COMMUNICATIONS: CTAF/UNICOM 123.05

RCO 122.1R 122.6 110.8T (RANCHO MURIETA RADIO)

® **NORCAL APP/DEP CON** 125.4

CLEARANCE DELIVERY PHONE: For CD ctc NorCal Apch at 916-361-6874.

AIRSPACE: CLASS E.

RADIO AIDS TO NAVIGATION: NOTAM FILE MYV.

MARYSVILLE (VL) (DL) VOR/DME 110.8 MYV Chan 45 N39°05.92' W121°34.38' at fld. 62/16E.

VOR unusable:

013°-089° byd 25 NM

015°-089° byd 25 NM

184°-194° byd 25 NM

199°-225° byd 25 NM

207°-217° byd 25 NM

260°-301° byd 58 NM

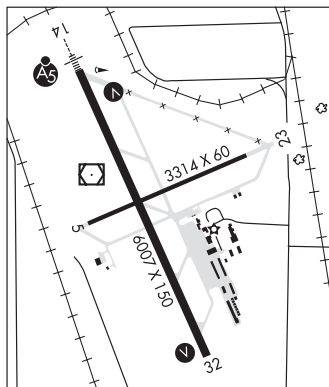
275°-295° byd 28 NM blo 6,000'

297°-300° byd 25 NM

DME unusable:

275°-295° byd 28 NM blo 6,000'

ILS 110.5 I-MYV RWY 14. Class IT. Unmonitored. Autopilot coupled apchs NA blw 695' (1.66 NM fm thld).



SAN FRANCISCO

H-3B, L-2G, 3A

IAP, AD

MC CLELLAN AIRFIELD (See SACRAMENTO on page 260)

MC CLELLAN-PALOMAR (See CARLSBAD on page 132)

MEADOWS FLD (See BAKERSFIELD on page 115)

MEFFORD FLD (See TULARE on page 302)

MENDOCINO N39°03.19' W123°16.46' NOTAM FILE UKI.

(VH) (H) **VORTACW** 112.3 ENI Chan 70 022° 5.5 NM to Ukiah Muni. 2985/16E.

SAN FRANCISCO

H-3A, L-2G