

**NAPA CO** (APC)(KAPC) 5 S UTC-8(-7DT) N38°12.79' W122°16.84'

**SAN FRANCISCO**

36 B NOTAM FILE APC MON Airport

H-3B, L-2F, 3A, A

**RWY 01L-19R:** H5930X150 (ASPH-GRVD) S-102, D-134, 2D-120

IAP, AD

PCN 41 F/D/X/T MIRL 0.3% up N

**RWY 01L:** MALS.

**RWY 19R:** PAPI(P4L)—GA 3.25° TCH 52'. Rgt tfc.

**RWY 06-24:** H5008X150 (CONC) S-60, D-76, 2D-120

PCN 21 R/C/W/T MIRL 0.4% up NE

**RWY 06:** REIL.

**RWY 01R-19L:** H2510X75 (ASPH) S-13.5 PCN 5 F/D/X/T 0.4% up N

**RWY 01R:** Rgt tfc.

**LAND AND HOLD—SHORT OPERATIONS**

LDG RWY	HOLD—SHORT POINT	AVBL LDG DIST
<b>RWY 24</b>	01L-19R	3700

**SERVICE:** S4 FUEL 100LL, JET A OX3, 4 L6T When twr clsd  
ACTIVATE MALS Rwy 01L; REIL Rwy 06, MIRL Rwy 01L-19R and  
Rwy 06-24—CTAF. PAPI Rwy 19R opr continuously.

**AIRPORT REMARKS:** Attended 1500-0400Z‡. For fuel svc 0500-1400Z‡  
call 707-224-0887. Unlgt bridge 1 NM S, 167' AGL. Asph apron  
strength 12,500-30,000 lbs gross weight single wheel. Due to arpt  
proximity to wetlands birds on and invof the arpt year around with  
highest concentration of activity of birds on the rwys during rainy  
weather. Landing fee. Ldg fee chrgd to all air taxi, coml acft ops (exc fit instruction), and trans acft weighing more than  
12500 lbs. NOTE:See Special Notices—Arrival Alert.

**AIRPORT MANAGER:** 707-253-4300

**WEATHER DATA SOURCES:** ASOS (707) 252-7916

**COMMUNICATIONS:** CTAF 118.7 ATIS 124.05 707-255-2847 UNICOM 122.95

Ⓡ **OAKLAND CENTER APP/DEP CON** 127.8 353.5

**TOWER** 118.7 (1500-0400Z‡) **GND CON** 121.7 **CLNC DEL** 127.85

**CLEARANCE DELIVERY PHONE:** For CD when ATCT clsd ctc Oakland ARTCC at 510-745-3380.

**AIRSPACE:** CLASS D svc 1500-0400Z‡; other times CLASS G.

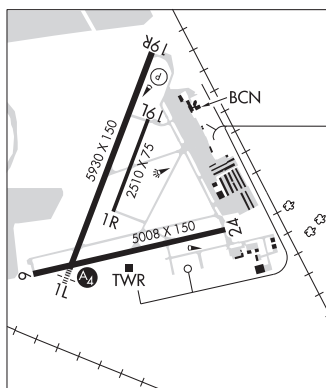
**RADIO AIDS TO NAVIGATION:** NOTAM FILE APC.

**SCAGGS ISLAND (VL) (H) VORTACW** 112.1 SGD Chan 58 N38°10.76' W122°22.39' 048° 4.8 NM to fld. 5/17E.

VOR unusable:

064°-068° byd 40 NM  
082°-087° byd 40 NM  
098°-112° byd 40 NM blo 8,000'  
098°-112° byd 74 NM  
190°-239° byd 40 NM  
244°-257° byd 40 NM  
285°-303° byd 40 NM  
310°-331° byd 40 NM  
336°-045° byd 40 NM

**ILS/DME** 111.3 I-APC Chan 50 Rwy 01L. Class IE. LOC unmonitored when ATCT clsd. Glideslope unusable byd  
4° left and 7° right of course. Autopilot coupled apchs not applicable blw 530' MSL (1.3 NM from thld).



**NAVAL BASE VENTURA CO** (See POINT MUGU NAS (NAVAL BASE VENTURA CO) on page 246)