

SAN MARTIN (E16) 1 E UTC-8(-7DT) N37°04.90' W121°35.81'**SAN FRANCISCO**

284 B NOTAM FILE E16

L-3B

RWY 14-32: H3095X75 (ASPH) S-12.5 MIRL 0.3% N

IAP

RWY 14: PAPI(P2L)—GA 4.0° TCH 41'. Pole.**RWY 32:** PAPI(P2L)—GA 4.0° TCH 42'. Tree. Rgt tfc.**SERVICE:** S4 **FUEL** JET A, UL94 **OX** 3, 4 **LGT** Arpt bcn dusk-dawn. ACTIVATE MIRL Rwy 14-32 —CTAF. PAPI Rwy 14 and Rwy 32 on continuously.**AIRPORT REMARKS:** Attended Wed-Thu 1800-0100Z†. Fuel: Bgng January 1, 2022 100LL unavbl. Parachute Jumping. Approaching acft fly downwind legs east of freeway. No crosswind turns below 1300' MSL, departures climb to 2000' MSL.**AIRPORT MANAGER:** 408-918-7700**WEATHER DATA SOURCES:** AWOS-3P 118.350 (408) 918-7724.**COMMUNICATIONS:** CTAF/UNICOM 122.7

Ⓜ NORCAL APP CON 124.525

Ⓜ NORCAL DEP CON 120.1

CLEARANCE DELIVERY PHONE: For CD ctc NorCal Apch at 916-361-3748.**RADIO AIDS TO NAVIGATION:** NOTAM FILE SJC.**SAN JOSE (L) (L) VORW/DME** 114.1 SJC Chan 88 N37°22.48'

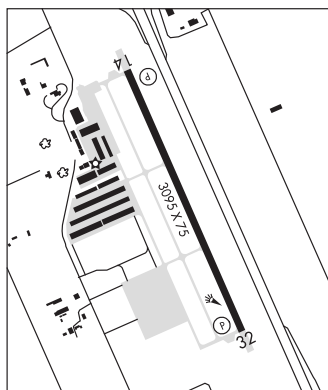
W121°56.68' 120° 24.2 NM to fld. 35/16E.

VOR unusable:

000°-070° byd 25 NM blo 6,500'

140°-160° byd 25 NM blo 6,100'

170°-240° byd 30 NM blo 6,700'

**SAN NICOLAS ISLAND FOLF** (NSI)(KNSI) NAF 0 E UTC-8(-7DT) N33°14.39' W119°27.49'**LOS ANGELES**

506 B NOTAM FILE NSI Not insp.

H-4H, L-3E, 4G

RWY 12-30: H10002X200 (PEM) PCN 63 R/C/W/T HIRL

DIAP, AD

RWY 12: Thld dsplcd 992'.**RWY 30:** PAPI(P4L)—GA 3.0° TCH 55'. Rgt tfc.**RUNWAY DECLARED DISTANCE INFORMATION****RWY 12:** LDA-9010**SERVICE:** **LGT** PAPI Rwy 30 u/s ufn. **MILITARY— JASU** 1(NC-10C) **FUEL** J5 (MIL)**NOISE:** Remain at least 1 mile offshore or 1000' MSL.**MILITARY REMARKS:** Opr Mon-Thu/alternate Fri 1500-0000Z†, CLOSED alternate Fri, all Sat, Sun and holidays. **RSTD** Offl Bus.

PPR for all tsnt acft. 72 hrs PN rqr'd and not earlier than 7 days; no same day PPR. Min 24 hr PN rqr'd; min 48 hrs PN for lrg/hvy acft. PPR issued Mon-Fri 1400-2200Z† only exc hol and apvd by airfield mgr. Acft that fail to arr wi +/- 30 min ETA risk being cndd unless prior cnd/update is made. Send all PPR req via email to NVBC_AFM@US.NAVY.MIL.

New Civil Aircraft Landing Permit (CALP) rqr's 30 days prior notice for cnd/legal review. Wt brg waivers rqr NBVC (Pt Mugu)

Afld Mgr apvl min 24 hrs prior notice. All mil readiness exer/trg events rqr cndn with NBVC Afld Mgr prior to PPR being issued. No fleet svc avbl. Acft prkg space extremely ltd. No hngr space. 180-deg turns on porous friction sfc prohibited.

MV-22 Ops prohibited. Possible divert all acft except emergency to Point Mugu NAWS due drone missile opr. Rwy 12 tkf and ldg 9002'. **CAUTION** Poss turb short final Rwy 30. Unlit wind turbines aprx 160' tall, lctd between 3,930' and 6,105' south of the rwy cntrln. **CSTMS/AG/IMG** Not a port of entry; svcs not avbl. **MISC** Call Plead CON 127.55/280.7 or Point Mugu APP 128.65 325.0 prior to entering W289. First 500 ft Rwy 12/30 conc; remainder porous friction sfc.**COMMUNICATIONS:****NAVY NICOLAS TOWER** 126.85 379.3 (Mon-Thu/alternate Fri 1500-0000Z†, clsd alternate Fri, all Sat, Sun and holidays)**PLEAD CON** 132.425 306.6**CLEARANCE DELIVERY PHONE:** Rstd: offl bus. Ppr for all tsnt acft. 72 hr pn rqr'd and not earlier than 7 days; no same day ppr.

Min 24 hr pn rqr'd; min 48 hr pn for lrg/hvy acft. Ppr issued mon-fri 0600-1400l only exc hol and apvd by airfield mgr.

Acft that fail to arr wi +/- 30 min of eta risk being cndd unless prior CDn/update is made. Send all ppr req via email to nvbc_afm@us.navy.mil. New civil aircraft landing permit (calp) rqr's 30 days prior notice for CDn/legal review. Wt brg waivers rqr nbvc (pt mugu) aflld mgr apvl min 24 hrs prior notice. All mil readiness exer/trg events rqr CDn with nbvc aflld mgr prior to ppr being issued. No fleet svc avbl. Acft prkg space extremely ltd. No hngr space. 180-deg turns on porous friction sfc prohibited. Mv-22 ops prohibited.

AIRSPACE: CLASS D svc 1500-0030Z† Mon-Fri; other times CLASS G.

CONTINUED ON NEXT PAGE

CONTINUED FROM PRECEDING PAGE

RADIO AIDS TO NAVIGATION: NOTAM FILE NSI.

(L) TACAN Chan 39 NSI (110.2) N33°14.10' W119°27.50' at fld. 522/12E. TACAN unmonitored when afld clsd.

TACAN AZIMUTH unusable:

- 108°-123° byd 29 NM blo 7,700'
- 123°-283° byd 12 NM
- 123°-283° byd 8 NM blo 5,500'

DME unusable:

- 108°-123° byd 29 NM blo 7,700'
- 123°-283° byd 12 NM
- 123°-283° byd 8 NM blo 5,500'

SANDBERG SDB N34°45.00' W118°43.00'/4523
ASOS 120.625 (661) 231-0405 Hawthorne FSS NOTAM file: HHR

LOS ANGELES
L-3D, 4G, 7B

SANTA ANA

JOHN WAYNE/ORANGE CO (SNA)(KSNA) 4 S UTC-8(-7DT) N33°40.54' W117°52.09'

LOS ANGELES
COPTER
H-4I, L-3E, 4H, A
IAP, AD

56 B TPA—See Remarks Class I, ARFF Index C NOTAM FILE SNA MON Airport

RWY 02L-20R: H5700X150 (ASPH-GRVD) S-70, D-200, 2S-121,

2D-300 PCR 602 F/A/X/T HIRL 0.3% up S

RWY 02L: PAPI(P4L)—GA 3.0° TCH 75'. RVR-R

RWY 20R: MALSR. PAPI(P4L)—GA 3.0° TCH 68'. RVR-T Rgt tfc.

RWY 02R-20L: H2886X75 (ASPH-GRVD) S-25, D-60

PCN 120F/B/X/T MIRL 0.4% up S No Part 121/Part 380 Ops

RWY 02R: Rgt tfc.

RWY 20L: REIL. PAPI(P4L)—GA 3.0° TCH 26'. Bldg.

RUNWAY DECLARED DISTANCE INFORMATION

RWY 02L:TORA-5700 TODA-5700 ASDA-5700 LDA-5700

RWY 20R:TORA-5700 TODA-5700 ASDA-5700 LDA-5700

SERVICE: S4 FUEL 100LL, JET A OX 3, 4 LGT When twr clsd ACTVT

MALSR Rwy 20R and PAPI Rwy 02L, and 20R—CTAF.

NOISE: Noise abatement procedures in effect contact arpt noise office 949-252-5185. Maintain at or above 300' AGL until established on final.

AIRPORT REMARKS: Attended continuously. Rwy 02R-20L CLOSED when

ATCT clsd. Be alert to birds on and in/ov arpt. VFR Acft: To avoid

overflight of Rwy 20R, Rwy 20L arns fly final at 15 deg angle to rwy;

Rwy 20L deps turn 15 deg left at dep end of rwy. To avoid overflight

of Rwy 02L, Rwy 02R deps turn 15 deg right at dep end of rwy. Acft

ldg Rwy 20L, use ctn for jet blast from acft hldg btn Rwy 20L and Rwy 20R at Twy L and ctn wake turb from jet acft ldg

Rwy 20R. ASDE-X in use. Operate transponders with altitude reporting mode and ADS-B (if equipped) enabled on all

airport surfaces. Rwy 02L-20R TPA—1056 (1000) small acft; 1556 (1500) turbine acft over 12500 lbs.; Rwy 02R-20L

TPA—856 (800) small sgl eng acft, 1056 (1000) twin eng acft. FBO general aviation aprons limited to max gwt of

100,000 lbs (dual gear) and with wingspans less than 100'. General aviation acft prohibited from using any portion of

the air carrier commercial ramp. When twr clsd no local training or touch and go operations. Ctc gnd ctl prior to pushback

on Twy A and Twy B. Overnight tiedown fee. User fee arpt.

AIRPORT MANAGER: 949-252-5171

WEATHER DATA SOURCES: ASOS (714) 338-2330 LAWRS (1400-0700Z±).

COMMUNICATIONS: CTAF 126.8 D-ATIS 126.0 714-338-2340 UNICOM 122.95

SANTA ANA RCO 122.4 (RIVERSIDE RADIO)

Ⓡ SOCIAL APP CON 121.3

TOWER 119.9 (Rwy 02R-20L) 126.8 (Rwy 02L-20R) 128.35 (1415-0700Z±)

GND CON 120.8 CLNC DEL 118.0 121.85

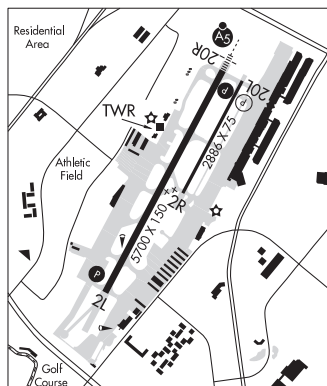
Ⓡ SOCIAL DEP CON 124.1 128.1 132.7

CPDLC (LOGON KUSA)

PDC

CLEARANCE DELIVERY PHONE: For CD when ATCT clsd ctc SoCal Apch at 800-448-3724.

AIRSPACE: CLASS C svc ctc APP CON svc 1415-0700Z± other times CLASS G.



CONTINUED ON NEXT PAGE