

CONTINUED FROM PRECEDING PAGE

RADIO AIDS TO NAVIGATION: NOTAM FILE NSI.

(L) TACAN Chan 39 NSI (110.2) N33°14.10' W119°27.50' at fld. 522/12E. TACAN unmonitored when afld clsd.

TACAN AZIMUTH unusable:

108°-123° byd 29 NM blo 7,700'

123°-283° byd 12 NM

123°-283° byd 8 NM blo 5,500'

DME unusable:

108°-123° byd 29 NM blo 7,700'

123°-283° byd 12 NM

123°-283° byd 8 NM blo 5,500'

SANDBERG SDB N34°45.00' W118°43.00'/4523
ASOS 120.625 (661) 231-0405 Hawthorne FSS NOTAM file: HHR

LOS ANGELES
L-3D, 4G, 7B

SANTA ANA

JOHN WAYNE/ORANGE CO (SNA)(KSNA) 4 S UTC-8(-7DT) N33°40.54' W117°52.09'

LOS ANGELES
COPTER
H-4I, L-3E, 4H, A
IAP, AD

56 B TPA—See Remarks Class I, ARFF Index C NOTAM FILE SNA MON Airport

RWY 02L-20R: H5700X150 (ASPH-GRVD) S-70, D-200, 2S-121,

2D-300 PCR 602 F/A/X/T HIRL 0.3% up S

RWY 02L: PAPI(P4L)—GA 3.0° TCH 75'. RVR-R

RWY 20R: MALSR. PAPI(P4L)—GA 3.0° TCH 68'. RVR-T Rgt tfc.

RWY 02R-20L: H2886X75 (ASPH-GRVD) S-25, D-60

PCN 120F/B/X/T MIRL 0.4% up S No Part 121/Part 380 Ops

RWY 02R: Rgt tfc.

RWY 20L: REIL. PAPI(P4L)—GA 3.0° TCH 26'. Bldg.

RUNWAY DECLARED DISTANCE INFORMATION

RWY 02L:TORA-5700 TODA-5700 ASDA-5700 LDA-5700

RWY 20R:TORA-5700 TODA-5700 ASDA-5700 LDA-5700

SERVICE: S4 FUEL 100LL, JET A OX 3, 4 LGT When twr clsd ACTVT

MALSR Rwy 20R and PAPI Rwy 02L, and 20R—CTAF.

NOISE: Noise abatement procedures in effect contact arpt noise office 949-252-5185. Maintain at or above 300' AGL until established on final.

AIRPORT REMARKS: Attended continuously. Rwy 02R-20L CLOSED when ATCT clsd. Be alert to birds on and in/ov arpt. VFR Acft: To avoid overflight of Rwy 20R, Rwy 20L arns fly final at 15 deg angle to rwy; Rwy 20L deps turn 15 deg left at dep end of rwy. To avoid overflight of Rwy 02L, Rwy 02R deps turn 15 deg right at dep end of rwy. Acft ldg Rwy 20L, use ctn for jet blast from acft hldg btn Rwy 20L and Rwy 20R at Twy L and ctn wake turb from jet acft ldg Rwy 20R. ASDE-X in use. Operate transponders with altitude reporting mode and ADS-B (if equipped) enabled on all airport surfaces. Rwy 02L-20R TPA—1056 (1000) small acft; 1556 (1500) turbine acft over 12500 lbs.; Rwy 02R-20L TPA—856 (800) small sgl eng acft, 1056 (1000) twin eng acft. FBO general aviation aprons limited to max gwt of 100,000 lbs (dual gear) and with wingspans less than 100'. General aviation acft prohibited from using any portion of the air carrier commercial ramp. When twr clsd no local training or touch and go operations. Ctc gnd ctl prior to pushback on Twy A and Twy B. Overnight tiedown fee. User fee arpt.

AIRPORT MANAGER: 949-252-5171

WEATHER DATA SOURCES: ASOS (714) 338-2330 LAWRS (1400-0700Z†).

COMMUNICATIONS: CTAF 126.8 D-ATIS 126.0 714-338-2340 UNICOM 122.95

SANTA ANA RCO 122.4 (RIVERSIDE RADIO)

Ⓡ SOCAL APP CON 121.3

TOWER 119.9 (Rwy 02R-20L) 126.8 (Rwy 02L-20R) 128.35 (1415-0700Z†)

GND CON 120.8 CLNC DEL 118.0 121.85

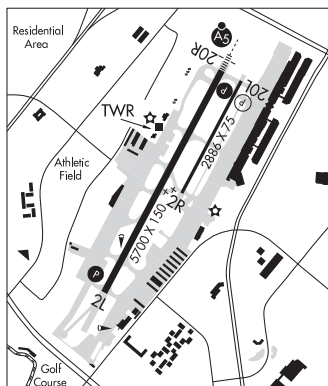
Ⓡ SOCAL DEP CON 124.1 128.1 132.7

CPDLC (LOGON KUSA)

PDC

CLEARANCE DELIVERY PHONE: For CD when ATCT clsd ctc SoCal Apch at 800-448-3724.

AIRSPACE: CLASS C svc ctc APP CON svc 1415-0700Z† other times CLASS G.



CONTINUED ON NEXT PAGE

CONTINUED FROM PRECEDING PAGE

VOR TEST FACILITY (VOT) 110.0

RADIO AIDS TO NAVIGATION: NOTAM FILE SLI.

SEAL BEACH (VL) (L) VORTACW 115.7 SLI Chan 104 N33°47.00' W118°03.29' 110° 11.3 NM to fld. 22/15E.

VOR unusable:

017°-027° byd 40 NM blo 18,000'
 028°-038° byd 40 NM
 075°-085° byd 40 NM blo 8,000'
 075°-085° byd 48 NM blo 11,000'
 075°-085° byd 65 NM
 086°-123° byd 40 NM
 124°-134° byd 40 NM blo 4,000'
 124°-134° byd 48 NM
 125°-180° byd 30 NM blo 4,000'
 135°-145° byd 40 NM
 183°-193° byd 40 NM
 245°-256° byd 40 NM blo 5,500'
 245°-256° byd 57 NM
 278°-282° byd 40 NM
 321°-016° byd 40 NM

TACAN AZIMUTH unusable:

125°-195° byd 20 NM blo 5,000'

DME unusable:

125°-195° byd 20 NM blo 5,000'

ILS/DME 111.75 I-SNA Chan 54(Y) Rwy 20R. Class IE. Unmonitored when ATCT closed. LOC back course unusable byd 30° left and 25° right of course. LOC unusable byd 30° left of course.

LDA/DME 108.3 I-OJW Chan 20 Rwy 20X. LDA unmonitored when ATCT clsd. Ry 20X created to support OJW LDA associated with SNA ILS Rwy 20R.

SANTA BARBARA HUG N34°22.60' W120°10.11'/152

LOS ANGELES

AWOS-3 119.625 (805) 961-4256 - offshore harmony platform

SANTA BARBARA MUNI (SBA)(KSBA) 7 W UTC-8(-7DT) N34°25.57' W119°50.49'

LOS ANGELES

14 B TPA—See Remarks ARFF Index—See Remarks NOTAM FILE SBA

H-4H, L-3D, 4F, 7A

RWY 07-25: H6052X150 (ASPH-GRVD) S-113, D-188, 2S-175, 2D-318 PCR 658 F/D/X/T HIRL

IAP, AD

RWY 07: MALSR. RVR-T Tree. Rgt tfc.

RWY 25: REIL. PAPI(P4L)—GA 3.0° TCH 50'. RVR-R Fence.

RWY 15R-33L: H4184X100 (ASPH) S-25, D-39, 2S-80 PCR 45 F/D/X/T MIRL No Part 121/Part 380 Ops

RWY 15R: REIL. Tree.

RWY 33L: Tree. Rgt tfc.

RWY 15L-33R: H4180X75 (ASPH) S-39, D-61, 2S-80, 2D-108 PCR 45 F/D/X/T No Part 121/Part 380 Ops

RWY 15L: Bldg.

RWY 33R: Rgt tfc.

RUNWAY DECLARED DISTANCE INFORMATION

RWY 07: TORA-6052 TODA-6052 ASDA-6052 LDA-6052

RWY 15L: TORA-4180 TODA-4180 ASDA-4180 LDA-3963

RWY 15R: TORA-4184 TODA-4184 ASDA-4184 LDA-4184

RWY 25: TORA-6052 TODA-6052 ASDA-6052 LDA-6052

RWY 33L: TORA-4184 TODA-4184 ASDA-4184 LDA-4184

RWY 33R: TORA-4180 TODA-4180 ASDA-4180 LDA-4180

SERVICE: S4 FUEL 100LL, JET A OX 1, 2, 3, 4 LGT When ATCT clsd ACTVT MALSR Rwy 07; REIL Rwy 15R and 25; HIRL Rwy 07-25; MIRL Rwy 15R-33L—CTAF. PAPI Rwy 25 opr consly.

NOISE: Noise abatement procs in eft ctc arpt opns 805-692-6025.

AIRPORT REMARKS: Attended 1400-0700Z±. 100LL fuel 24 hr credit card svc avbl. Fee for Jet A fuel after hrs call 805-454-0051 or 967-5608. Numerous flocks of birds on and invof arpt. Rwy 15L-33R dalgt hrs only. Class I, ARFF Index C. All ACR acft ctc atc on freq 121.7 prior to pushback from trml ramp and ron prkg 1400-0700Z±. Escorts rrd from ron prkg when atc is closed; ctc arpt ops 805-681-4803. Due to ltd ramp space at the airline terminal non-scheduled transport category acft with more than 30 passenger seats are required to ctc arpt ops 805-681-4803 24 hour PPR to arrival. Commercial airline ramp clsd to all General Aviation acft. No customs personnel or facilities are avbl and international acft will not be allowed to land unless an emerg exists. TPA-1004(990) small acft, 1504(1490) large acft. Pure jet touch/go or low approaches prohibited. SAID in use. Operate transponders with altitude reporting mode and ADS-B (if equipped) enabled on all airport surfaces. Ldg fee for Part 135 opns and trnst acft with max GWT of 10,000 lbs or more. Fees will be billed/mailed. Ldg fee.

AIRPORT MANAGER: 805-967-7111

CONTINUED ON NEXT PAGE