

## COLORADO SPRINGS

CITY OF COLORADO SPRINGS MUNI (COS)(KCOS) P (AF AFRC) 6 SE UTC-7(-6DT) N38°48.35'

DENVER

H-3F, 5A, L-10F

IAP, AD

W104°42.05'

6187 B LRA Class I, ARFF Index C NOTAM FILE COS

**RWY 17L-35R:** H13500X150 (CONC-GRVD) S-120, D-250, 2S-175, 2D-550, 2D/2D2-1120 PCR 1060 R/B/W/T HIRL CL

**RWY 17L:** MALSR. TDZL. PAPI(P4L)—GA 3.0° TCH 57'. RVR-TR 0.6% down.

**RWY 35R:** TDZL. REIL. PAPI(P4R)—GA 3.0° TCH 71'. RVR-TR 0.6% up.

**RWY 17R-35L:** H11022X150 (ASPH-GRVD) S-120, D-250, 2S-175, 2D-550, 2D/2D2-1120 PCR 1160 F/A/X/T HIRL

**RWY 17R:** REIL. PAPI(P4L)—GA 3.0° TCH 49'. RVR-TR 1.2% down.

**RWY 35L:** MALSR. PAPI(P4L)—GA 3.0° TCH 72'. RVR-TR 1.2% up.

**RWY 13-31:** H8270X150 (ASPH-GRVD) S-120, D-171, 2S-175, 2D-279, 2D/2D2-691 PCR 460 F/C/X/T MIRL

**RWY 13:** REIL. PAPI(P4R)—GA 3.0° TCH 64'. 0.3% down.

**RWY 31:** REIL. PAPI(P4L)—GA 3.04° TCH 52'. Thld dsplcd 52'. Hill. 0.5% up..

**RUNWAY DECLARED DISTANCE INFORMATION**

**RWY 13:** TORA-8270 TODA-8270 ASDA-8270 LDA-8270

**RWY 17L:** TORA-13501 TODA-13501 ASDA-13501 LDA-13501

**RWY 17R:** TORA-11022 TODA-11022 ASDA-11022 LDA-11022

**RWY 31:** TORA-8270 TODA-8270 ASDA-8270 LDA-7914

**RWY 35L:** TORA-11022 TODA-11022 ASDA-11022 LDA-11022

**RWY 35R:** TORA-13501 TODA-13501 ASDA-13501 LDA-13501

**SERVICE:** S4 FUEL 100LL, JET A OX1 LGT ACTVT REIL Rwy 13 and Rwy 31, 17R—Ctc COS twr. Lgtd windsock apch Rwys 17L-35R, 17R-35L and 13-31. **MILITARY—** JASU 2(MA32A-60A), 2(MA32-86A), 2(AM32A-95), 1(SGNC), 2(B809D-Generators). FUEL A+ +(MIL). A, A+ (C719-591-2288.) (NC-100LL) FLUID PRESAIR LHOX; LOX-LOX and hi pressure air ltd. OIL O-133-148-156(Mil) **TRAN ALERT** PPR rqr for all tran acct—ctc afld mgmt DSN 834-4778/9 C719-556-4778/9. Afld mgmt opr 1300-0500Z±, clsd hol. Fort Carson arrival/departure air control group (ADACG) MSN, ctc DSN 532-8002/3 or C719-503-8002/3. All tran acct ctc High Country 30 min prior to arr. Tran acct ctc Colorado Springs Rgnl Comd post (callsign: HIGH COUNTRY) with ATA and ATD.

**AIRPORT REMARKS:** Attended continuously. Waterfowl and migratory bird activity on and in/ovf arpt. SAID in use. Operate transponders with altitude reporting mode and ADS-B (if equipped) enabled on all airport surfaces. Turbojet trng flts prohibited 0600-1300Z±. B52 ops prohibited. Be alert; intensive USAF student trng in/ovf Colorado Springs and Pueblo, Colorado. Portions of Twys A, B, E, F, G, and M are blocked from view from the twr by obst. Portions of Twy C and Rwy 17R-35L are blocked from view from the twr when the infield mil operation sfc is occupied by a C17 or C5. Ctn: acct with wingspan greater than 117'; when taxi on cntrln A2, A3, A4, use oversteer in turns due to insufficient corner fillets in pavement. Due to limited prkg and potential to dmg lgt, unsecured acct, mobility acct are not permitted to use Colorado Springs FBO unless FBO can guarantee sufficient prkg clnc that blast fm eng thrust and reverse thrust will not impact otr acct, gnd psnl, or eqpt. Cstms avbl for all mil/civ acct. Ctc US Customs 719-574-6607. See Special Notices—USAF 306 FTG Flight Training Areas, Vicinity of Colorado Springs and Pueblo Colorado. Lndg fee.

**AIRPORT MANAGER:** (719) 550-1900

**WEATHER DATA SOURCES:** ASOS 125.0 (719) 694-7502. LLWAS.

**COMMUNICATIONS:** ATIS 125.0 719-596-7040 UNICOM 122.95 PTD 122.85 (Ltd to Peterson Ramp Only)

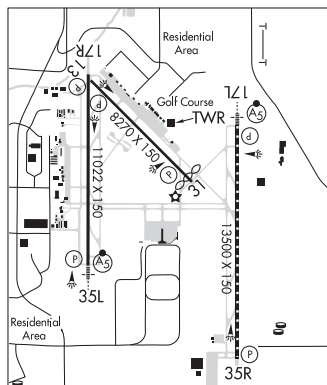
**BLACK FOREST RCO** 122.4 (DENVER RADIO)

Ⓡ SPRINGS APP CON 120.6 124.0

SPRINGS TOWER 119.9 133.15 GND CON 121.7 CLNC DEL 134.45

Ⓡ SPRINGS DEP CON 124.0

**AIRSPACE:** CLASS C svc ctc APP CON.



CONTINUED ON NEXT PAGE

CONTINUED FROM PRECEDING PAGE

VOR TEST FACILITY (VOT) 110.4

RADIO AIDS TO NAVIGATION: NOTAM FILE DEN.

BLACK FOREST (VH) (DH) VORW/DME 112.5 BRK Chan 72 N38°56.67' W104°38.01' 193° 8.9 NM to fld. 6935/8E.

VOR unusable:

- 046°-109° byd 40NM
- 110°-120° byd 40 NM blo 9,000'
- 110°-120° byd 50 NM
- 121°-132° byd 40 NM
- 133°-149° byd 40 NM blo 7,000'
- 133°-149° byd 50 NM blo 8,500'
- 133°-149° byd 54 NM
- 150°-165° byd 40 NM
- 180°-187° byd 40 NM blo 7,400'
- 180°-187° byd 46 NM
- 188°-197° byd 40 NM
- 198°-208° byd 40 NM blo 16,300'
- 198°-208° byd 48 NM
- 209°-272° byd 40 NM
- 273°-283° byd 40 NM blo 15,000'
- 273°-283° byd 60 NM
- 284°-359° byd 40 NM
- 305°-045° byd 10 NM blo 13,000'
- 305°-045° byd 26 NM

DME unusable:

- 210°-230° byd 30 NM blo 17,000'
- 230°-250° byd 30 NM blo 17,900'
- 250°-267° byd 30 NM blo 17,000'
- 305°-045° byd 27 NM blo 13,000'
- 330°-045° byd 20 NM blo 10,500'

PETEEY NDB (MHW/LOM) 407 CO N38°41.66' W104°42.98' 358° 6.7 NM to fld. 5574/8E. NOTAM FILE COS.

ILS/DME 109.1 I-LPI Chan 28 Rwy 17L. Class IIE.

ILS 109.9 I-COS Rwy 35L. Class IIE. LOC unusable byd 25° left of course; byd 8NM 10° left of course. Glideslope tch is higher than std. Autopilot cpd apch NA blw 6,400 MSL.

ILS/DME 109.1 I-AHI Chan 28 Rwy 35R. Class IE. LOC front course unusable byd 15° left of course byd 8 NM due to military restricted airspace.

COMM/NAV/WEATHER REMARKS: Wx opr H24 incl wkend; ctc 834-4337, C719-556-4337. Obsn and fcst by NWS KCOS.

LLWAS KPEF watch, warning, adzy.