

**PUEBLO MEML** (PUB)(KPUB) 5 E UTC-7(-6DT) N38°17.40' W104°29.88'

4729 B Class I, ARFF Index B NOTAM FILE PUB

**RWY 08R-26L:** H10498X150 (ASPH-GRVD) S-75, D-170, 2D-250

PCR 517 F/D/X/T HIRL

**RWY 08R:** MALSR. PAPI(P4L)—GA 3.0° TCH 63'. Rgt tfc.

**RWY 26L:** REIL. PAPI(P4L)—GA 3.0° TCH 62'. 0.4 % up..

**RWY 17-35:** H8310X150 (ASPH-GRVD) S-93, D-110, 2S-140, 2D-170 PCR 610 F/B/X/T MIRL

**RWY 17:** REIL. PAPI(P4L)—GA 3.0° TCH 54'. 1.0% down..

**RWY 35:** REIL. PAPI(P4L)—GA 3.0° TCH 48'. 0.9% up..

**RWY 08L-26R:** H4690X75 (ASPH-GRVD) S-20, 2S-175 MIRL

**RWY 08L:** REIL. PAPI(P4L)—GA 3.0° TCH 40'.

**RWY 26R:** REIL. PAPI(P4L)—GA 3.0° TCH 40'.

**LAND AND HOLD-SHORT OPERATIONS**

LDG RWY	HOLD-SHORT POINT	AVBL LDG DIST
RWY 17	08L-26R	4700
RWY 26L	17-35	8300

**RUNWAY DECLARED DISTANCE INFORMATION**

<b>RWY 08L:</b> TORA-4690 TODA-4690 ASDA-4690 LDA-4690
<b>RWY 08R:</b> TORA-10496 TODA-10496 ASDA-10496 LDA-10496
<b>RWY 17:</b> TORA-8308 TODA-8308 ASDA-8308 LDA-8308
<b>RWY 26L:</b> TORA-10496 TODA-10496 ASDA-10496 LDA-10496
<b>RWY 26R:</b> TORA-4690 TODA-4690 ASDA-4690 LDA-4690
<b>RWY 35:</b> TORA-8308 TODA-8308 ASDA-8308 LDA-8308

**SERVICE:** S4 FUEL 100LL, JET A OX 3 LGT When atct clsd ACTIVATE MALSR Rwy 08R; REIL Rwy 08L, 17, 26R, 26L, & 35; PAPI Rwy 08R, 08L, 17, 26R, & 35; HIRL Rwy 08R-26L; MIRL Rwy 08L-26R, 17-35—CTAF. PAPI Rwy 26L on consly.

**AIRPORT REMARKS:** Attended 1300-0500Z†. Conditions not monitored 0500-1300Z†. Fuel: 100LL: Aft hrs (719) 948-1310 or use 100LL self-svc. SAID in use. Operate transponders with altitude reporting mode and ADS-B (if equipped) enabled on all airport surfaces. Rpd rfi avbl F/W, R/W dur FBO hr 1400-0500Z†. Ctc FBO 719-948-1310 24 HR pn and freq 122.95 prior to Indg. Adz ATC for rpd rfi ops and procd to west ramp. Be alert, intensive USAF student training invov Colorado Springs and Pueblo Colorado. Rwy 08L-26R avbl to acft under 20,000 lbs during dalgt and night hrs. Twy A btn Twy D and A6 50 ft wid. Txl E 30 ft wide btn Twy E6 and Twy E7. High volume training DA-20 acft Mon-Fri SR-SS. Overhead pat during training. Extensive use of training area 12-28 DME north to southwest of arpt 500' AGL to 8500' MSL Mon-Fri SR-SS. See Special Notices—USAF 306 FTG Flight Training Areas, Vicinity of Colorado Springs and Pueblo Colorado.

**AIRPORT MANAGER:** 719-553-2760

**WEATHER DATA SOURCES:** ASOS (719) 225-7029

**COMMUNICATIONS:** CTAF 119.1 ATIS 125.25 UNICOM 122.95

RCO 122.2 (DENVER RADIO)

Ⓡ DENVER APP/DEP CON 120.1 (1300-0500Z†)

Ⓡ DENVER CENTER APP/DEP CON 128.375 (0500-1300Z†)

TOWER 119.1 (1300-0500Z†) GND CON 121.9 CLNC DEL 120.9

**CLEARANCE DELIVERY PHONE:** For CD ctc Pueblo Apch at 303-342-1916, when Apch clsd ctc Denver ARTCC at 303-651-4257.

**AIRSPACE:** CLASS D svc 1300-0500Z†; other times CLASS E.

**RADIO AIDS TO NAVIGATION:** NOTAM FILE PUB.

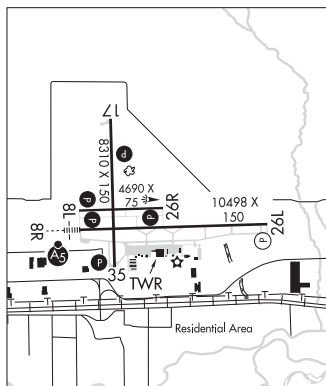
(VH) (H) VORTACW 116.7 PUB Chan 114 N38°17.66' W104°25.77' 257° 3.2 NM to fld. 4756/8E.

VOR unusable:

000°-030° byd 40 NM  
 215°-227° byd 40 NM blo 16,000'  
 215°-227° byd 62 NM  
 228°-240° byd 40 NM blo 18,000'  
 280°-340° byd 40 NM  
 341°-348° byd 40 NM blo 18,000'  
 349°-359° byd 40 NM blo 9,000'  
 349°-359° byd 61 NM

ILS 109.5 I-PUB Rwy 08R. Class IE. Unmonitored when ATCT closed.

ILS 108.3 I-TFR Rwy 26L. Class IA. ILS unmt when ATCT clsd. Autopilot cpd apchs NA blo 4,817'.



**DENVER**  
**H-5A, L-10F**  
**IAP, AD**