

LOA

**WAYNE WONDERLAND** (38U) 3 SE UTC-7(-6DT) N38°21.77' W111°35.76'

LAS VEGAS  
H-3D, L-9C

7027 B NOTAM FILE CDC

RWY 13-31: H5693X75 (ASPH) S-16 MIRL

SERVICE: FUEL 100LL LGT ACTVT MIRL Rwy 13-31—CTAF.

AIRPORT REMARKS: Unattended. For fuel call amgr 435-836-1300.

AIRPORT MANAGER: (435) 836-1300

COMMUNICATIONS: CTAF 122.9

CLEARANCE DELIVERY PHONE: For CD ctc Salt Lake ARTCC at 801-320-2568.

RADIO AIDS TO NAVIGATION: NOTAM FILE HVE.

HANKSVILLE (VH) (H) VORTACW 115.9 HVE Chan 106 N38°25.01' W110°41.98' 251° 42.4 NM to fld.

4431/15E.

VOR unusable:

015°-025° byd 40 NM blo 18,000'

026°-065° byd 40 NM

030°-060° byd 25 NM blo 7,500'

160°-180° byd 15 NM blo 9,500'

160°-190° byd 40 NM

215°-220° byd 40 NM

221°-231° byd 40 NM blo 18,000'

232°-248° byd 40 NM

249°-259° byd 40 NM blo 16,000'

249°-259° byd 74 NM

260°-014° byd 40 NM

TACAN AZIMUTH unusable:

030°-060° byd 25 NM blo 7,500'

160°-180° byd 15 NM blo 9,500'

DME unusable:

030°-060° byd 25 NM blo 7,500'

160°-180° byd 15 NM blo 9,500'

**LOGAN-CACHE** (LGU)(KLGU) 3 NW UTC-7(-6DT) N41°47.51' W111°51.10'

SALT LAKE CITY

4457 B Class IV, ARFF Index A NOTAM FILE LGU

H-3D, L-11D

RWY 17-35: H9020X100 (ASPH) S-24, D-179 PCR 550 F/D/X/T

IAP, AD

HIRL

RWY 17: MALSR. PAPI(P2L)—GA 3.0° TCH 45'. Railroad.

RWY 35: REIL. PAPI(P2L)—GA 3.0° TCH 39'.

RWY 10-28: H4075X60 (ASPH) S-12

RWY 28: Railroad.

**RUNWAY DECLARED DISTANCE INFORMATION**

RWY 10: TORA-4075 TODA-4075

RWY 17: TORA-9020 TODA-9020 ASDA-9020 LDA-9020

RWY 28: TORA-4075 TODA-4075

RWY 35: TORA-9020 TODA-9020 ASDA-9020 LDA-9020

SERVICE: S4 FUEL 100LL, JET A OX 1, 2 LGT ACTVT MALSR Rwy

17; REIL Rwy 35; PAPI Rwy 17 and Rwy 35; HIRL Rwy

17-35—CTAF.

AIRPORT REMARKS: Attended 1500-0200Z±. Birds on and invof arpt spring

and summer. Rwy 10-28 dalgt use only. 100LL fuel avbl H24 with

credit card; aft hr-435-753-2221/435-752-5955. Flt trng invof

arpt. Cold temperature airport. Altitude correction required at or below

-14C. Landing fee, ctc amgr for more info.

AIRPORT MANAGER: 435-755-1750

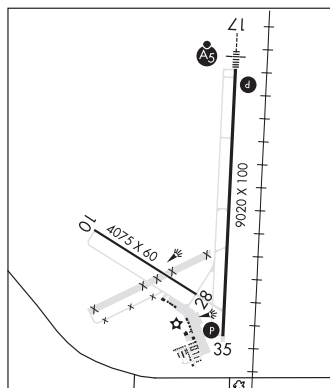
WEATHER DATA SOURCES: ASOS 135.275 (435) 752-6941.

COMMUNICATIONS: CTAF/UNICOM 122.8

FRANCIS PEAK RCO 122.2. (CEDAR CITY RADIO)

® SALT LAKE CENTER APP/DEP CON 127.7

CLEARANCE DELIVERY PHONE: For CD ctc Salt Lake ARTCC at 801-320-2568.



CONTINUED ON NEXT PAGE

## CONTINUED FROM PRECEDING PAGE

## RADIO AIDS TO NAVIGATION: NOTAM FILE CDC.

**BRIGHAM CITY (L) (L) VOR/DME** 112.9 LHO Chan 76 N41°47.57' W112°00.59' 076° 7.1 NM to fld. 5354/14E.

## VOR unusable:

010°-045° byd 20 NM blo 15,000'  
 045°-070° byd 20 NM blo 16,000'  
 070°-110° byd 20 NM blo 15,000'  
 110°-155° byd 15 NM blo 12,000'  
 155°-215° byd 15 NM blo 15,000'  
 155°-215° byd 20 NM  
 305°-320° byd 20 NM blo 15,000'

## DME unusable:

010°-045° byd 20 NM blo 15,000'  
 045°-070° byd 20 NM blo 16,000'  
 070°-125° byd 20 NM blo 15,000'  
 155°-245° byd 15 NM  
 245°-320° byd 20 NM blo 15,000'

**ILS/DME** 109.15 I-LGU Chan 28(Y) Rwy 17. Class IE. LOC unusable byd 12° left of course. ILS is unmonitored.

**LUCIN** N41°21.78' W113°50.44' NOTAM FILE CDC.

**SALT LAKE CITY**

**(VH) (H) VORTAC** 113.6 LCU Chan 83 176° 39.6 NM to Wendover. 4400/17E.

**H-3D, L-11C**

## VOR unusable:

057°-073° byd 40 NM blo 13,000'  
 057°-073° byd 80 NM blo 18,000'  
 074°-103° byd 40 NM  
 155°-165° byd 40 NM  
 180°-240° byd 35 NM blo 12,000'  
 185°-207° byd 40 NM  
 208°-218° byd 40 NM blo 23,000'  
 219°-229° byd 40 NM  
 230°-240° byd 40 NM blo 18,000'

## TACAN AZIMUTH unusable:

180°-240° byd 35 NM blo 12,000'

## DME unusable:

180°-240° byd 35 NM blo 12,000'

**RCO** 122.1R 113.6T (CEDAR CITY RADIO)

**MANILA** (40U) 2 E UTC-7(-6DT) N40°59.18' W109°40.71'

**SALT LAKE CITY**

6179 B NOTAM FILE CDC

**H-3E, L-9D, 11D**

**RWY 07-25:** H5305X60 (ASPH) S-26 MIRL 1.2% up W

**IAP**

**RWY 07:** Hill.

**RWY 25:** Trees.

**SERVICE:** LGT SS-SR.

**AIRPORT REMARKS:** Unattended. Snow plowing irreg. Call for FICONs. 3 to 6 ft ditch parl to rwy, 40 ft each side of cntrln.

**AIRPORT MANAGER:** 801-913-5223

**WEATHER DATA SOURCES:** AWOS-3PT 119.250 (435) 784-3123.

**COMMUNICATIONS:** CTAF/UNICOM 122.8

® **SALT LAKE CENTER APP/DEP CON** 119.95

**CLEARANCE DELIVERY PHONE:** For CD ctc Salt Lake ARTCC at 801-320-2568.

**RADIO AIDS TO NAVIGATION:** NOTAM FILE VEL.

**VERNAL (VL) (L) VOR/DME** 114.15 VEL Chan 88(Y) N40°22.73' W109°29.60' 332° 37.4 NM to fld. 5339/15E.

## VOR unusable:

026°-036° byd 40 NM blo 11,700'  
 026°-036° byd 54 NM  
 037°-063° byd 40 NM  
 050°-055° byd 30 NM blo 16,000'  
 064°-069° byd 40 NM blo 10,800'  
 064°-069° byd 45 NM  
 184°-199° byd 40 NM  
 200°-212° byd 17 NM  
 213°-223° byd 17 NM blo 14,900'  
 224°-252° byd 17 NM  
 253°-025° byd 40 NM

## DME unusable:

044°-082° byd 30 NM blo 16,000'  
 175°-265° byd 15 NM  
 323°-346° byd 35 NM blo 14,500'

