

POLACCA (P1Ø) 3 SW UTC-7 N35°47.50' W110°25.40'
 5573 TPA—6398(825) NOTAM FILE PRC
RWY 04-22: H4200X50 (ASPH) 0.3% up NE

DENVER
L-8G

RWY 04: Brush.
RWY 22: Brush.

AIRPORT REMARKS: Unattended. Underlies mil ops area; be aware of rstrns and NOTAMS bfr ops. Rwy 04-22 rough, lrg cracks, holes, patches and 8-10 in rocks. High grass and weeds in cracks. Rwy 04-22, 1-5' brush 45' from centerline both sides full length; road crosses rwy. Rwy 04-22 cntrln marking faded. Wash in safety zone. Parking ramp has blue perimeter lgtts.

AIRPORT MANAGER: 928-734-3101

COMMUNICATIONS: CTAF 122.9

CLEARANCE DELIVERY PHONE: For CD etc Denver ARTCC at 303-651-4257.

RADIO AIDS TO NAVIGATION: NOTAM FILE PRC.

TUBA CITY (VH) (H) VORTAC 113.5 TBC Chan 82 N36°07.28' W111°16.18' 100° 45.7 NM to fld. 5045/15E.

VOR unusable:
 089°-160° byd 40 NM
 183°-202° byd 40 NM
 207°-231° byd 40 NM
 235°-245° byd 40 NM
 275°-053° byd 40 NM

PRESCOTT RGNL/ERNEST A LOVE FLD (PRC)(KPRC) 7 N UTC-7 N34°39.29' W112°25.15'

PHOENIX
H-4I, L-8F
IAP, AD

5045 B TPA—See Remarks ARFF Index—See Remarks NOTAM FILE PRC MON Airport

RWY 03R-21L: H7619X150 (ASPH-PFC) S-63, D-80, 2S-101,

2D-100 PCR 140 F/D/X/T MIRL 0.9% up SW

RWY 03R: REIL. PAPI(P4L)—GA 4.1° TCH 45'. Thld dsplcd 380'.
 Road.

RWY 21L: MALSR. PAPI(P4L)—GA 3.0° TCH 55'. Rgt tfc.

RWY 12-30: H4408X75 (ASPH) S-12.5 PCN 10 F/C/Y/T MIRL

0.6% up SE No Part 121/Part 380 Ops

RWY 12: REIL. PAPI(P2L)—GA 4.24° TCH 52'. Thld dsplcd 150'.

RWY 30: REIL. PAPI(P2L)—GA 3.6° TCH 44'.

RWY 03L-21R: H4395X60 (ASPH) S-12.5 PCN 2 F/D/X/T MIRL

0.8% up SW No Part 121/Part 380 Ops

RWY 03L: REIL. PAPI(P2L)—GA 3.0° TCH 40'. Thld dsplcd 360'. Rgt tfc.

RWY 21R: REIL. PAPI(P2L)—GA 3.0° TCH 40'. Rgt tfc.

LAND AND HOLD—SHORT OPERATIONS

| LDG RWY | HOLD—SHORT POINT | AVBL LDG DIST |
|---------|------------------|---------------|
| RWY 21L | 12-30 | 5904 |

RUNWAY DECLARED DISTANCE INFORMATION

| |
|--|
| RWY 03R: TORA-7619 TODA-7619 ASDA-7619 LDA-7240 |
| RWY 12: TORA-4408 TODA-4408 ASDA-4408 LDA-4258 |
| RWY 21L: TORA-7619 TODA-7619 ASDA-7619 LDA-7619 |
| RWY 30: TORA-4408 TODA-4408 ASDA-4258 LDA-4308 |

SERVICE: S4 FUEL 100LL, JET A LGT When ATCT clsd: ACTVT MALSR Rwy 21L; REIL Rwy 03L, 03R, 21R; PAPI Rwy 03R & Rwy 21L; MIRL 03L, 03R, 21L and 21R—CTAF. ACTVT REIL Rwy 12 & 30; PAPI Rwy 12 and 30; MIRL Rwy 12-30—128.75. PAPI Rwy 03L and 21R opr consly.

NOISE: Voluntary noise abatement proc in efct — amg

AIRPORT REMARKS: Attended 1300-0500Z. 100LL fuel avbl 1300-0400Z—928-443-9333; PPR aft hr. Self svc rstrd to wingspan 50 ft or less. Rwy 03L-21R CLOSED 0500-1300Z. Rwy 03R-21L - Rwy 21L calm wind rwy. Rwy 21L dep rwy hdg til acrs hwy & make imt L turn. Rwy 12-30, use ctn for chg in rwy gradient at Rwy 03R-21L int. Rwy 12 20 ft dropoff 300 ft fm apch end. Wildlife on & invof arpt. FICON not monitored 0500-1300Z. Class I, ARFF Index A. ARFF Index B avbl upon request. Winch tow up to 2500 ft 6 NM E at A C Goodwin Meml Fld. TPA for light acct all rwsy 6045(1000). TPA for large acct, all turbo prop/jet and high perf acct all rwsy 6545(1500). Tsnt, ovngt prkg fee and Indg fee - 928-443-9333. NOTE: See Special Notices—Extensive Flight Training in the vicinity of Ernest A. Love Field, Prescott, AZ. NOTE: See Special Notices—Arrival Alert.

AIRPORT MANAGER: 928-777-1114

WEATHER DATA SOURCES: ASOS 127.2 (928) 541-3850.

COMMUNICATIONS: CTAF 125.3 ATIS 127.2 UNICOM 122.95

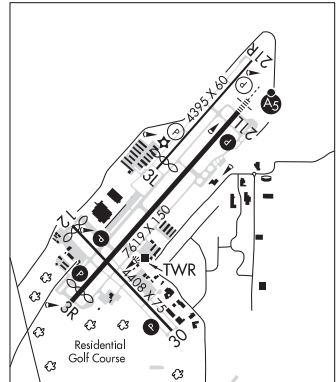
PRESCOTT RCO 122.2 (PRESCOTT RADIO)

Ⓡ **PHOENIX APP/DEP CON** 133.575

PRESCOTT TOWER 125.3 (1300-0500Z) **GND CON** 121.7 **PRESCOTT CLNC DEL** 119.25

CLEARANCE DELIVERY PHONE: For CD when ATCT clsd, etc Phoenix Apch at 602-306-2565.

AIRSPACE: CLASS D svc 1300-0500Z; other times CLASS E.



CONTINUED ON NEXT PAGE

CONTINUED FROM PRECEDING PAGE

VOR TEST FACILITY (VOT) 110.0

RADIO AIDS TO NAVIGATION: NOTAM FILE PRC.

DRAKE (VH) (H) VORTACW 114.1 DRK Chan 88 N34°42.15' W112°28.82' 119° 4.2 NM to fld. 4966/14E.

VOR unusable:

055°-080° byd 29 NM blo 9,300'
 065°-079° byd 40 NM blo 22,000'
 125°-140° byd 35 NM blo 8,500'
 128°-230° byd 40 NM
 140°-160° byd 30 NM blo 9,500'
 160°-175° byd 35 NM blo 9,500'
 175°-185° byd 30 NM blo 9,500'
 185°-195° byd 23 NM blo 9,100'
 195°-220° byd 13 NM blo 9,100'
 220°-235° byd 25 NM blo 9,100'
 233°-243° byd 40 NM blo 18,000'
 265°-275° byd 30 NM blo 8,800'
 266°-274° byd 40 NM

TACAN AZIMUTH unusable:

055°-080° byd 29 NM blo 9,300'
 125°-140° byd 35 NM blo 8,500'
 140°-160° byd 30 NM blo 9,500'
 160°-175° byd 35 NM blo 9,500'
 175°-185° byd 30 NM blo 9,500'
 185°-195° byd 23 NM blo 9,100'
 195°-220° byd 13 NM blo 9,100'
 220°-235° byd 25 NM blo 9,100'
 265°-275° byd 30 NM blo 8,800'

DME unusable:

055°-080° byd 29 NM blo 9,300'
 125°-140° byd 35 NM blo 8,500'
 140°-160° byd 30 NM blo 9,500'
 160°-175° byd 35 NM blo 9,500'
 175°-185° byd 30 NM blo 9,500'
 185°-195° byd 23 NM blo 9,100'
 195°-220° byd 13 NM blo 9,100'
 220°-235° byd 25 NM blo 9,100'
 265°-275° byd 30 NM blo 8,800'

ILS/DME 108.5 I-PRC Chan 22 Rwy 21L. Class IA. ILS/DME unmonitored 0500-1300Z.

ROBLES N32°04.46' W111°21.61' NOTAM FILE PRC.
NDB (MHW) 220 RBJ 2611/12E. NDB unmonitored.

PHOENIX
L-5C

ROLLE AIRFIELD (See SAN LUIS on page 82)

RYAN FLD (See TUCSON on page 96)