

**AEROFLEX/ANDOVER** (See ANDOVER on page 157)

**ALEXANDRIA** (See PITTSTOWN on page 174)

**ANDOVER**

**AEROFLEX/ANDOVER** (12N) 3 N UTC-5(-4DT) N41°00.52' W74°44.28'

**NEW YORK**  
L-33A, 34H  
IAP

583 B NOTAM FILE 12N

**RWY 03-21:** H1981X50 (ASPH) MIRL

**RWY 03:** Trees. Rgt tfc.

**RWY 21:** Tree.

**SERVICE:** S4 **FUEL** 100LL **LGT** ACTVT MIRL Rwy 03-21—CTAF.

**NOISE:** Noise abatement procedures in effect. Ctc amgr 973-786-6350.

**AIRPORT REMARKS:** Attended Tues-Sun 1400-2200Z. Deer and birds on and invof arpt. Parallel turf rwy restricted use only. No touch and go ldfs. PPR required for night transients ctc amgr 973-786-5100. Avoid overflying Lake Lenape while on downwind. Arpt rstd to apch Category A acft only. Rwy 03-21 lakes at both apch ends. Dirt svc road to trml area in front of Rwy 03 thld.

**AIRPORT MANAGER:** 973-786-6350

**WEATHER DATA SOURCES:** ASOS (609) 325-2295

**COMMUNICATIONS:** CTAF/UNICOM 122.8

® **NEWARK APP/DEP CON** 123.775

**CLEARANCE DELIVERY PHONE:** For CD ctc Newark Apch at 800-645-3206.

**RADIO AIDS TO NAVIGATION:** NOTAM FILE MIV.

**STILLWATER (L) (V) VOR/DME** 109.6 STW Chan 33 N40°59.75' W74°52.14' 094° 6.0 NM to fld. 920/11W.

DME unusable:

089°-099° within 12 NM blo 10,000'

210°-320° byd 30 NM blo 4,000'

**HELIPAD H1:** H20X15 (ASPH)

**HELIPAD H2:** H20X15 (ASPH)

**ATLANTIC CITY INTL** (ACY)(KACY) P (ANG) 9 NW UTC-5(-4DT) N39°27.45' W74°34.63'

**WASHINGTON**  
H-101, 12J, L-34G  
IAP, AD

75 B Class I, ARFF Index C NOTAM FILE ACY

**RWY 13-31:** H10001X150 (ASPH-GRVD) S-120, D-250, 2S-152,

2D-550, 2D/2D2-1120 PCR 601 F/A/X/T HIRL CL

**RWY 13:** MALS.R. TDZL. PAPI(P4L)—GA 3.0° TCH 71'. RVR-TR Tree.

**RWY 31:** REIL. PAPI(P4L)—GA 3.0° TCH 69'. RVR-TR Tree.

**RWY 04-22:** H6145X150 (ASPH-CONC-GRVD) S-120, D-161,

2S-175, 2D-278, 2D/2D2-682 PCR 480 R/B/W/T HIRL

**RWY 04:** PAPI(P4L)—GA 3.0° TCH 50'. Tree.

**RWY 22:** VASI(V4L)—GA 3.0° TCH 51'. Tree.

**LAND AND HOLD—SHORT OPERATIONS**

LDG RWY	HOLD—SHORT POINT	AVBL LDG DIST
RWY 04	13-31	3550
RWY 13	04-22	3600
RWY 31	04-22	5750

**RUNWAY DECLARED DISTANCE INFORMATION**

RWY 04:	TORA-6145	TODA-6145	ASDA-6145	LDA-6145
RWY 13:	TORA-10001	TODA-10001	ASDA-10001	LDA-10001
RWY 22:	TORA-6145	TODA-6145	ASDA-6145	LDA-6145
RWY 31:	TORA-10001	TODA-10001	ASDA-10001	LDA-10001

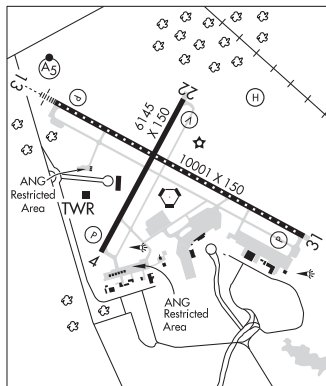
**ARRESTING GEAR/SYSTEM**

**RWY 13** BAK-14 BAK-12B (B) (1600') BAK-14 BAK-12B (B) (1600')  
**RWY 31**

**SERVICE:** S3 **FUEL** 100LL, JET A, A++ **OX 3 MILITARY— A-GEAR** Avoid centerline lgt dur cable engagement to prevent tailhook bounce. **FUEL** A++(MIL) (NC-100LL, A) **OIL** JOAP(Mil) **TRAN ALERT** Ltd maint and prk.

**NOISE:** Noise abatement procs in efct ctc arpt opns at 609-645-7895 extn 4702.

**AIRPORT REMARKS:** Attended continuously. No trng flts 0400-1200Z. A-Gear Rwy 31 located 1600' from thld, ctc twr for ops. Avoid centerline lights during cable engagement to prevent tailhook bounce. Fox and birds on and invof arpt. Pilots conducting EFVS ops; be aware LED ALS in use Rwy 13. Twy C clsd to dual tandem and double tandem equipped acft. Experimental heliport located on N side of arpt rstd to use of FAA project acft only. ANG arm/dearm pads for mil use only. High per mil acft operating at arpt. For itinerant mil acft ops PPR ctc arpt ops 609-645-7895 ext 4702. FAA apron PPR call 609-485-6482. De-icing pad for de-icing ops only. Exc ctc arpt ops 609-645-7895 ext 4702. US Customs user fee arpt. Customs avbl Mon-Fri 1300-2200Z. Provide minimum 24 hr advance notice to arrange for Customs. All calls to Customs Mon-Fri 1300-2200Z, phone 609-484-1610. U.S. Customs fax 609-484-614. Ldg fee.



CONTINUED ON NEXT PAGE

