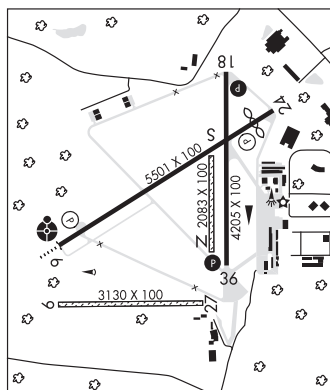


**TULLAHOMA RGNL/WM NORTHERN FLD** (THA)(KTHA) 2 NW UTC-6(-5DT) N35°22.81' W86°14.81'  
1084 B NOTAM FILE BNA

**ATLANTA**  
H-6K, 9A, L-16J  
IAP

**RWY 06-24:** H5501X100 (ASPH-CONC) S-76, D-100  
PCN 29 F/C/X/T MIRL  
**RWY 06:** ODALS. REIL. PAPI(P2L)—GA 3.0° TCH 41'. Tree.  
**RWY 24:** REIL. PAPI(P2L)—GA 3.0° TCH 33'. Thid dsplcd 500'. Tree.  
**RWY 18-36:** H4205X100 (ASPH-CONC) S-37 MIRL  
**RWY 18:** REIL. PAPI(P2L)—GA 2.95° TCH 34'. Tree.  
**RWY 36:** REIL. PAPI(P2L)—GA 3.0° TCH 42'. Tree.  
**RWY 09-27:** 3130X100 (TURF)  
**RWY 09:** Tree. Rgt tfc.  
**RWY 27:** Tree.  
**RWY N-S:** 2083X100 (TURF)  
**RWY N:** Tree.  
**RWY S:** Tree.



**SERVICE:** S4 FUEL 100, JET A LGT ACTVT ODALS Rwy 06; PAPI Rwy 18 and 36; MIRL Rwy 18-36—CTAF. MIRL Rwy 06-24 preset to low intst; incr intst—CTAF. Rwy 36 PAPI unubl byd 7 degs left and right of cntrin.

**AIRPORT REMARKS:** Attended 1400-0000Z†. Parachute Jumping, Glider Ops, geese and deer on and invof arpt; PAJA Indg zone E of paved Rwy 18-36 midfield. Rwy 09-27 field cond soft sfc when wet. Rwy 18-36 markings faded and peeling.

**AIRPORT MANAGER:** 931-455-3884

**WEATHER DATA SOURCES:** AWOS-3 128.325 (931) 454-2052.

**COMMUNICATIONS:** CTAF/UNICOM 123.0

Ⓜ **MEMPHIS CENTER APP/DEP CON** 128.15

**CLEARANCE DELIVERY PHONE:** For CD ctc Memphis ARTCC at 901-368-8453/8449.

**RADIO AIDS TO NAVIGATION:** NOTAM FILE BNA.

**SHELBYVILLE (L) (L) VORV/DME** 113.55 SYI Chan 82(Y) N35°33.72' W86°26.35' 140° 14.4 NM to fld. 813/1W.

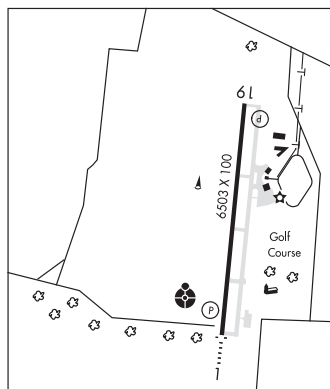
DME unusable:  
021°-045° byd 30 NM blo 4,500'

**UNION CITY**

**EVERETT-STEWART RGNL** (UCY)(KUCY) 4 SE UTC-6(-5DT) N36°22.78' W88°59.14'  
346 B NOTAM FILE MKL

**ST LOUIS**  
H-6J, L-16H  
IAP

**RWY 01-19:** H6503X100 (ASPH) PCN 3 F/D/X/T MIRL 0.6% up S  
**RWY 01:** ODALS. REIL. PAPI(P4L)—GA 3.0° TCH 42'.  
**RWY 19:** REIL. PAPI(P4L)—GA 3.0° TCH 29'. P-line.  
**SERVICE:** S4 FUEL 100LL, JET A+ 0X 1, 2, 3, 4 LGT ACTVT ODALS  
Rwy 01—CTAF. PAPI Rwy 01 and Rwy 19 opr consly.



**AIRPORT REMARKS:** Attended Mon-Sat 1330-2300Z†, Sun 1830-2300Z†.  
Aerobic activity invof arpt. Rwy 01 R tfc when aerobic area active.

**AIRPORT MANAGER:** 731-885-1221

**WEATHER DATA SOURCES:** AWOS-3 135.325 (731) 885-9161.

**COMMUNICATIONS:** CTAF/UNICOM 122.7

Ⓜ **MEMPHIS CENTER APP/DEP CON** 133.65

**CLEARANCE DELIVERY PHONE:** For CD ctc Memphis ARTCC at 901-368-8453/8449.

**RADIO AIDS TO NAVIGATION:** NOTAM FILE MKL.

**OBION NDB (MHW/LOM)** 212 UC N36°17.86'  
W88°59.69' 005° 4.9 NM to fld. 310/OE. NDB unmonitored.

**DYERSBURG (L) TACAN** Chan 115 DYR (116.8) N36°01.11'

W89°19.06' 034° 27.0 NM to fld. 389/3E. NOTAM FILE

DYR.  
ILS 109.7 I-UCY Rwy 01. Class IE. LOM OBION NDB. LOC

Monitored 1400-2300Z† at fbo.

**UPPER CUMBERLAND RGNL** (See SPARTA on page 476)

**VOLUNTEER** N35°54.29' W83°53.68' NOTAM FILE TYS.  
(H) (H) VORTACW 116.4 VVX Chan 111 224° 7.4 NM to Mc Ghee Tyson. 1315/3W.

**ATLANTA**  
H-9B, 12G, L-25B

**WARREN CO MEML** (See MC MINNVILLE on page 459)