

## TUCSON

**RYAN FLD** (RYN)(KRYN) 10 SW UTC-7 N32°08.53' W111°10.47'

2419 B TPA—3219(800) NOTAM FILE PRC

**RWY 06R-24L:** H5500X75 (ASPH) S-12.5, D-30 MIRL

**RWY 06R:** REIL. PAPI(P4L)—GA 3.0° TCH 53'. Rgt tfc.

**RWY 24L:** VASI(V4L)—GA 3.0° TCH 26'.

**RWY 06L-24R:** H4900X75 (ASPH) S-12.5, D-30 MIRL

**RWY 06L:** REIL. PAPI(P4L)—GA 3.0° TCH 42'.

**RWY 24R:** PAPI(P4L)—GA 3.0° TCH 42'. Rgt tfc.

**RWY 15-33:** H4010X75 (ASPH) MIRL 0.8% up S

**RWY 15:** Rgt tfc.

**SERVICE:** S4 **FUEL** 100LL, JET A **LGT** When ATCT clsd ACTVT PAPI  
Rwy 06R, 06L, and 24R; VASI Rwy 24L; MIRL Rwy 06R-24L and  
15-33—CTAF. Rwy 24R PAPI unusbl byd 4.9 NM.

**AIRPORT REMARKS:** Attended Mon-Fri 1500-0000Z, Sat 1500-0000Z.

Fuel A 1500-0000Z; aft hr svc fee-520-744-7474; 100LL self serve  
H24 with credit card. Rwy 06L-24R CLSD when ATCT clsd. Rwy 06L  
and 06R calm wind rwy; aftn wind may favor Rwy 24L and Rwy 24R.  
Use Indg lghts in pat. Rwy 06R fqt ILS practice apchs. Note: See Special  
Notices—Glider Operations Northwest of Tucson, Arizona.

**AIRPORT MANAGER:** 520-573-8100

**WEATHER DATA SOURCES:** AWOS-3 (520) 578-0269

**COMMUNICATIONS:** CTAF 125.8 ATIS 133.35 (520-578-0269)

④ **TUCSON APP/DEP CON** 128.5

**TOWER** 125.8 120.35 (1300-0300Z) **GND CON** 118.2

**CLEARANCE DELIVERY PHONE:** For CD when ATCT is clsd ctc Tucson Apch at 520-829-6121.

**AIRSPACE:** CLASS D svc 1300-0300Z; other times CLASS E.

**RADIO AIDS TO NAVIGATION:** NOTAM FILE TUS.

**TUCSON (VH) (H) VORTACW** 116.0 TUS Chan 107 N32°05.71' W110°54.89' 270° 13.5 NM to fld. 2671/12E.

VOR unusable:

050°-080° byd 30 NM blo 11,500'

066°-076° byd 40 NM blo 11,500'

066°-076° byd 48 NM

077°-131° byd 40 NM

141°-164° byd 40 NM

191°-231° byd 40 NM

245°-249° byd 40 NM

275°-285°

290°-300° byd 40 NM blo 8,000'

290°-300° byd 52 NM

330°-341° byd 40 NM blo 9,000'

330°-341° byd 52 NM

342°-065° byd 40 NM

350°-020° byd 30 NM blo 13,000'

TACAN AZIMUTH unusable:

050°-080° byd 30 NM blo 11,500'

155°-165° byd 35 NM blo 13,000'

350°-020° byd 30 NM blo 13,000'

DME unusable:

050°-080° byd 30 NM blo 11,500'

155°-165° byd 35 NM blo 13,000'

350°-020° byd 30 NM blo 13,000'

**NDB (HW) 338** RYN N32°08.33' W111°09.69' at fld. 2420/12E. NOTAM FILE PRC. NDB unmonitored.

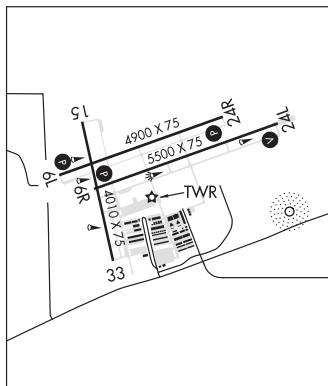
NDB unusable:

025°-050° byd 25 NM blo 14,500'

ILS 111.1 I-IVL Rwy 06R. Class IT.

**COMM/NAV/WEATHER REMARKS:** Twr freq will be 125.8 for all rwys exc Rwy 06L-24R when stated on the ATIS.

PHOENIX  
H-4J, L-5C  
IAP, AD



**TUCSON INTL** (TUS)(KTUS) P (ANG) 6 S UTC-7 N32°07.02' W110°56.49'

2643 B TPA—See Remarks AOE Class I, ARFF Index C NOTAM FILE TUS

**RWY 12-30:** H10996X150 (ASPH-GRVD) S-120, D-214, 2S-175, 2D-405, 2D/2D2-918

PCR 650 R/A/W/T HIRL

**RWY 12:** MALSR. PAPI(P4L)—GA 3.0° TCH 73'. RVR-T 0.7% up.

**RWY 30:** REIL. PAPI(P4L)—GA 3.0° TCH 81'. RVR-R Ground. Rgt tfc. 0.5% down.

**RWY 04-22:** H7000X150 (ASPH-GRVD) S-119, D-209, 2S-174, 2D-393, 2D/2D2-830 PCR 470 F/A/X/T MIRL

**RWY 04:** Thld dsplcd 850'. Railroad.

**RWY 22:** REIL. PAPI(P4L)—GA 3.0° TCH 53'. Rgt tfc.

PHOENIX  
H-4J, L-5C  
IAP, AD

CONTINUED ON NEXT PAGE

## CONTINUED FROM PRECEDING PAGE

## RUNWAY DECLARED DISTANCE INFORMATION

**RWY 04:** TORA-7000 TODA-7000 ASDA-7000 LDA-6150  
**RWY 12:** TORA-10996 TODA-10996 ASDA-10996 LDA-10996  
**RWY 22:** TORA-6000 TODA-7000 ASDA-6000 LDA-6000  
**RWY 30:** TORA-10996 TODA-10996 ASDA-10996 LDA-10996

## ARRESTING GEAR/SYSTEM

**RWY 12 BAK-14 BAK-12(B) (1000).** BAK-14 BAK-12(B) (1215) HOOK BAK 12(B) (128 OVRN). **RWY 30**  
**RWY 04 BAK-14 BAK-12(B) (1500).**

**SERVICE:** S4 **FUEL** 100LL, JET A, A++ **OX** 1, 2, 3, 4 **LGT** Rwy 12-30 lts rwy lgts: Exceeds 200 ft spacing at twy intrxn on north and south side of rwy. **MILITARY—A—GEAR** BAK-14/BAK-12B apch end Rwy 12, BAK-14/BAK-12B apch end Rwy 30 & BAK-14/BAK-12B apch end Rwy 22 avbl durg ANG duty hr; 5 min PN. **JASU** 1(C-26) 1(MD-3) 9(M32A-60) **FUEL** A (avbl 1300-0500Z, OT 2 hr PN \$50 fee, C520-889-0593.) (NC-100LL) **FLUID** PRESAIR LPOX LOX OIL O-133-156(Mil)

**AIRPORT REMARKS:** Attended continuously. Bird act Phase II in efct 1 July-31 Aug. CTN: NW arr & dep do not mistake Twy A for Indg sfc; Twy A is north & parallel to Rwy 30. Rwy 30, CTN: ensure dep rwy; do not mistake for demolished rwy. Flt trng 0500-1300Z not authorized except PPR-520-573-8190. Use upper ant until airborne. Operate parrot all sfc, pushback and gate arrival. TPA-3443 (800) small acft, 4043 (1400) large/heavy turbojet acft. Group V tax with inboard eng only. Trml ramp clsd to ADG IV and above without PPR. Charter, sport team, cargo and mil PPR-FBO. Landing and parking fees 12,500 lbs and up. Fixed wing jet vstol/vtol ops NA. Dstc rming mkrs NE side. USCBP insp ramp rflg not authorized exc med emerg. Portions Twy D not visible fm ATCT. Twy A5 ltd to 70,000 lb or less. Twy C clsd to wingspan grtr than 118 ft and tail hgt grtr than 45 ft. N Ramp clsd to wingspan grtr than 79 ft. Txl K clsd to acft with wingspan greater than 104 ft. General info 520-573-8182. CTN: Review arpt diagram hot spot info. ANG off bus only; 72 hr PPR - D844-6731/C520-295-6731; Fax extn 6732. Base ops 1300-2230Z Mon-Fri and drill wkend 1300-2130Z; clsd otr wksnds, hol and sked off days. Tran alert maint NA. Tsnt SI FSL only. Contr fuel NA. Mil/Comm/Base ops arr ctc TITAN or PUMA-ANG base ops/comd post freq. Flight Notification Service (ADCUS) avbl. NOTE: See Special Notices-Glider Operations Northwest of Tucson, Arizona. See Special Notices-Arrival Alert.

**AIRPORT MANAGER:** 520-573-4820

**WEATHER DATA SOURCES:** ASOS (520) 355-5542

**COMMUNICATIONS:** UNICOM 122.95 ATIS 123.8 (520-295-4089)

**TUCSON RCO** 122.2 (PRESCOTT RADIO)

**MOUNT LEMMON RCO** 122.4 (PRESCOTT RADIO)

® **APP CON** 125.1 (Rwy 12 090-285 TUS) (Rwy 30 275-065 TUS) 119.4 (Rwy 12 286-089 TUS) (Rwy 30 066-274 TUS) 128.5

® **DEP CON** 125.1 (Rwy 12 090-285 TUS) (Rwy 30 275-065 TUS) 119.4 (Rwy 12 286-089 TUS) (Rwy 30 066-274 TUS)

**TOWER** 118.3 119.0 **GND CON** 120.025 **CLNC DEL** 126.65

**AIRSPACE:** CLASS C svc ctc **APP CON.**

**RADIO AIDS TO NAVIGATION:** NOTAM FILE TUS.

**(VH) (H) VORTACW** 116.0 TUS Chan 107 N32°05.71' W110°54.89' 302° 1.9 NM to fld. 2671/12E.

VOR unusable:

050°-080° byd 30 NM blo 11,500'

066°-076° byd 40 NM blo 11,500'

066°-076° byd 48 NM

077°-131° byd 40 NM

141°-164° byd 40 NM

191°-231° byd 40 NM

245°-249° byd 40 NM

275°-285°

290°-300° byd 40 NM blo 8,000'

290°-300° byd 52 NM

330°-341° byd 40 NM blo 9,000'

330°-341° byd 52 NM

342°-065° byd 40 NM

350°-020° byd 30 NM blo 13,000'

TACAN AZIMUTH unusable:

050°-080° byd 30 NM blo 11,500'

155°-165° byd 35 NM blo 13,000'

350°-020° byd 30 NM blo 13,000'

DME unusable:

050°-080° byd 30 NM blo 11,500'

155°-165° byd 35 NM blo 13,000'

350°-020° byd 30 NM blo 13,000'

**ILS/DME** 111.7 I-TUS Chan 54 Rwy 12. Class IE.

---

**VALLE** (See GRAND CANYON on page 55)

---